



Annual Research Report

Calendar Year 2015



Pesticide-Related Poison Center Exposures in Children in Texas, 2000-2013

Trueblood A.B.¹, Forrester M.B.², Han D.³, Shipp E.M.⁴, Cizmas L.H.¹

¹Texas A&M Health Science Center School of Public Health, Department of Environmental and Occupational Health
²Texas Department of State Health Services, Environmental Epidemiology and Disease Registries Section
³Texas A&M Health Science Center School of Public Health, Department of Environmental and Occupational Health
⁴Texas A&M Transportation Institute, Center for Transportation Safety

Introduction

Pesticide exposures are associated with a range of acute and chronic health effects, such as headaches, nausea, developmental delays, cancer, and in extreme cases death.

Pesticides were the 8th most common reported exposure to the American Association of Poison Control Centers' National Poison Data System (AAPCC NPDS) in 2014.

While being a commonly reported exposure that can have known and potentially severe associated health effects, there is limited literature regarding the burden of pesticides on children.

The objective of the study was to assess pesticide-related poison center exposures in children aged ≤ 10 years for 2000-2013 in Texas to understand the potential burden of pesticides on children.

Methods

A cross-sectional study design utilizing data from the Texas Poison Center Network from 2000-2013 for pesticide exposures.

The study was approved by the Texas A&M Institutional Review Board (IRB) (Study #2015-0543M) and the Texas Department of State Health Services (DSHS) IRB (IRB #14-064).

The count of pesticide-related poison center exposures by year, season, pesticide category, and exposure route were calculated. The count, prevalence, and 95% confidence intervals (CIs) were calculated for all of Texas.

Results

• There were a total of 61,147 pesticide-related poison center exposures in children ≤10 years in Texas from 2000-2013.

• Children 5-9 years old had the highest prevalence overall for pesticide-related poison center exposures, as well as for unintentional exposures (Table 1).

• Children 13 to 19 years old had the highest prevalence for intentional pesticide-related poison center exposures (Table 1).

• Males accounted for more pesticide-related poison center exposures compared to females (55.11 vs. 44.54, respectively) (Table 1).

• Overall, the number of pesticide-related poison center exposures decreased over the study period (Figure 1).
• Annual Average 4,367 (Range 3,253-5,300).

• For all exposures, 32.08% and 25.62% of exposures occurred in the summer and spring, respectively (Figure 2).

• Rodenticides were the most commonly reported pesticide category (30.02%) (Figure 3).

• Ingestion was the most common exposure route (80.82%) (Figure 4).

Table 1. Pesticide-Related Poison Center Exposure Frequency and Prevalence by Children age ≤ 10 years in Texas, 2000-2013

Pesticide-Related Poison Center Exposure	# of Exposures		Prevalence per 100,000	
	Count	%	95% CI	95% CI
Total	61,147	100.00	1,000.00	999.99
Gender				
Male	33,701	55.11	999.99	999.99
Female	27,446	44.89	999.99	999.99
Age Group				
0 to 4 years old	12,000	19.63	999.99	999.99
5 to 9 years old	24,000	39.26	999.99	999.99
10 to 12 years old	12,000	19.63	999.99	999.99
13 to 19 years old	13,147	21.50	999.99	999.99
Season				
Spring	15,000	24.53	999.99	999.99
Summer	20,000	32.71	999.99	999.99
Fall	15,000	24.53	999.99	999.99
Winter	11,147	18.23	999.99	999.99
Pesticide Category				
Rodenticides	18,350	29.99	999.99	999.99
Herbicides	12,000	19.63	999.99	999.99
Insecticides	10,000	16.35	999.99	999.99
Fungicides	8,000	13.09	999.99	999.99
Other	3,000	4.91	999.99	999.99
Exposure Route				
Ingestion	49,400	80.82	999.99	999.99
Inhalation	10,000	16.35	999.99	999.99
Other	1,747	2.84	999.99	999.99

95% Confidence Interval.
*Age-specific and sex-specific Prevalence.



Table of Contents

Introduction.....	3
2015 REDI Program Grantees.....	4
SPH Centers & Programs.....	6
2015 Active Grants & Contracts.....	7
Publications.....	10
Presentations.....	17
Faculty Research Interests.....	21

Research Overview

Mission:

The Texas A&M School of Public Health is committed to transforming health through interdisciplinary inquiry, innovative solutions, and development of leaders through the Aggie tradition of service to engage diverse communities worldwide.

Values:

**Accountability,
Meaningful
Impact**

**G- Global and diverse:
Our
research crosses
borders**

**G- Generosity:
Through selfless
service**

I- Integrity

**E- Excellence: In
teaching,
research, service,
and practice**

S- Social Justice

**P- Professionals:
Leaders paving the
way**

**H- Honor Respect for
all**

Purpose: Research represents an integral part of the Texas A&M School of Public Health mission and activities with nearly 90% of faculty engaged in research. This report summarizes School of Public Health faculty projects, publications, presentations, and research interests during Calendar Year 2015.

Highlights: Calendar Year 2015 was a dynamic year marked by a record number of publications, significant funding, and the advent of a number of new initiatives, programs, and projects.

New Initiatives: In an effort to provide seed funding for innovative and promising research, the School of Public Health launched the inaugural Dean's Research and Development Initiative (REDI) Program in May 2015. Awarded through a competitive application and review process, six SPH investigators received awards of \$25,000 each to support their respective research projects. The inaugural grantees are included this report.

New Funding: A number of large grants and contracts were secured during the Year from diverse funders including CPRIT, HRSA, DSHS, NAS, NIH, and USDA. A few of the many awards received by SPH investigators are noted below. A full list is included this report.

Dr. Jane Bolin and Dr. David McClellan (PIs). *Continuation and Expansion of Texas A&M's Colorectal Cancer Screening, Training, Education, and Prevention Program*, Cancer Prevention & Research Institute of Texas (**CPRIT**).

Dr. Jennifer Horney (PI). *Utilizing Secondary Data to Assess the Health and Health System Impacts of Natural and Technological Disasters in the Gulf*, National Academy of Science (**NAS**).

Dr. Kenneth McLeroy (PI). *Integrating Teen Pregnancy Prevention Innovative Practices (iTIP)*, Office of Adolescent Health (**OAH**).

Dr. Ranjana Mehta (PI). *Obesity, Stress, and Neuromuscular Function in the Elderly*, National Institute on Aging, National Institute of Health (**NIH**).

Dr. Marcia Ory (PI). *Physical Activity Impacts of a Planned Activity-Friendly Community: The What, Where, When, and Why of Environmental Approaches to Obesity Prevention*, National Institute of Health (**NIH**).

Dr. Joseph Sharkey (PI). *Salud Para Usted y Su Familia [Health for You and Your Family]: Family-Focused Childhood Obesity Prevention through a Systems-Oriented Multilevel Approach in Arizona, New Mexico, and Texas Border Area*, United States Department of Agriculture **USDA** National Institute of Food and Agriculture.

Dr. Brandie Taylor (PI). *Maternal and Child Health Public Health Training Program*. Health Resources and Services Administration (**HRSA**).

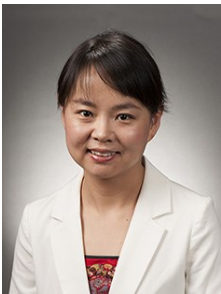
New Programs: During 2015, a number of new programs were formally established at SPH to enable researchers with similar interests to coalesce research interests, expertise, and projects. The Program on Asthma Research and Education (PARE) was approved in Fall 2015 under the direction of Dr. Genny Carrillo. Located in the Department of Environmental and Occupational Health, the program's mission is to promote collaborative research centered on community-based asthma research. The Program on Disability Research and Community-Based Care (PDRC), under the direction of Darcy McMaughan, Ph.D., was established in the Department of Health Policy and Management. The PDRC Program creates a locus of excellence in research on disability and community-based long term supports and services by providing a coordinated focus for both policy-relevant research and evaluations of promising new practices and clinical interventions

New Awards and Recognition. During 2015, all SPH Principal Faculty were invited to submit their outstanding peer reviewed journals for recognition in the Faculty Best Paper competition sponsored by SPH. Journal submissions were scored based on significance to public research and practice and implications for improving population health. At the Assistant Professor Level, the winners were Dr. Brandie Taylor (EPI/BIOS), Natalie Johnson (EOH), and Dr. Alva Ferdinand (HPM); the Associate Level winner was Dr. Y. Alicia Hong (HPCHS), and the winner at the Professor Level was Dr. Marcia Ory (HPCHS).

Research Enhancement & Development Initiative

The Texas A&M School of Public Health strives to support faculty in their research activities, including assistance in the development of new extramurally supported investigator-initiated research. The Inaugural SPH Dean's Research Enhancement and Development Initiative (REDI) program is designed to provide small pilot funding awards to SPH investigators in support of innovative, novel, and interdisciplinary ideas with a high probability of leading to significant external funding.

2015 Award Grantees



Y. Alicia Hong, PhD.
Associate Professor
Health Promotion & Community Health Sciences
Health-Related Mobile Use
Among Older Adults with Chronic Conditions

Tanya Garcia, PhD.
Assistant Professor
Epidemiology & Biostatistics
Identifying High-Dimensional Neuroimaging Biomarkers Associated with Huntington's Disease Motor-Onset



Natalie Johnson, PhD.
Assistant Professor
Environmental & Occupational Health
Impact of In Utero Aerosol Exposure on Asthma Susceptibility

Ranjana Mehta, PhD.
Assistant Professor
Environmental & Occupational Health
Obesity, Stress & Mobility Outcomes in Older Adults



Brandie Taylor, PhD.
Assistant Professor
Director, Program on Reproductive & Child Health
Epidemiology & Biostatistics
Early Pregnancy Serum Short-Chain Fatty Acids & Preeclampsia

Carmen Tekwe, PhD.
Assistant Professor
Epidemiology & Biostatistics
Novel Percentile-Based Statistical Methods to Model BMI Percentiles in Childhood Obesity



REDI AWARDS

Tanya Garcia, PhD.

Identifying High-Dimensional Neuroimaging Biomarkers Associated with Huntington's Disease Motor-Onset

This study aims to overcome methodological limitations by developing a new statistical method to identify and estimate the effects of high-dimensional neuroimaging measures in relation to age at Huntington's Disease (HD) onset. Major innovations include the introduction of tensor covariates into a Cox model, the discovery of salient structural neuroimaging biomarkers that will be useful for risk-profiling individuals at risk for HD, and the effective use of tensor properties that will allow analysis of different neuroimaging data. This will offer promising ways to predict HD motor-onset and increase the capacity to personalize early intervention based on structural neuroimaging measures.

Y. Alicia Hong, PhD.

Health-Related Mobile Use Among Older Adults with Chronic Conditions

This project will provide important data on older adults' attitudes and behaviors on health-related mobile use, factors affecting their mobile use behaviors at individual, interpersonal, and environmental levels, and their preferences for using mobile tools in chronic disease self-management. Through semi-structured interview, the specific aims will assist in understanding current mobile use behaviors among older adults with HIV, diabetes, or cancer, and explore intervention strategies on using mobile tools for chronic disease self management. It is one of the first studies to have in-depth examination of health-related mobile use among older adults, and will complement projects on mobile app development and testing to give a comprehensive picture of older adults' mobile app usage for chronic disease self-management.

Natalie Johnson, PhD.

Impact of In Utero Aerosol Exposure on Asthma Susceptibility

This study will provide preliminary data on the role that prenatal exposure to particulate matter plays in asthma pathogenesis in offspring using a mice model. This study will develop a mouse model of asthma susceptibility resulting from in-utero exposure to aerosol mixtures more representative of human exposures. The research in this model is innovative because it represents a new and substantive departure from the status quo by incorporating a representative human exposure in a mouse model of asthma susceptibility. Work in this study will establish a model providing a platform to explore the mechanisms underlying prenatal air pollution exposure and asthma susceptibility. Findings are likely to inform future preventive strategies for mother's unavoidably exposed to air pollution during pregnancy.

Ranjana Mehta, PhD.

Obesity, Stress, & Mobility Outcomes in Older Adults

This study will extend our understanding on how neural processes with obesity moderate mobility outcomes in older adults. This developmental research investigation is an important first step that will fundamentally advance current knowledge on obesity-related changes in neuromuscular function, which to date have mainly focused on changes in peripheral muscular capacities with obesity. This represents a new departure from the status quo by identifying obesity and stress specific neural activation patterns associated with mobility in older adults using a novel functional neuroimaging technique that allows brain imaging during movement. Outcomes will significantly influence how public health intervention strategies are designed that can improve physical functioning and mobility among obese older adults.

Brandie Taylor, PhD.

Early Pregnancy Serum Short-Chain Fatty Acids & Preeclampsia

This project will provide preliminary data for future studies to identify potential biomarkers for prediction of preeclampsia subtypes. Utilizing biological samples from an existing cohort study, this study will explore the role of short chain fatty acids (SCFA), danger associated molecular patterns (DAMP) and inflammation in preeclampsia defined by severity. The study aims to determine if SCFA reduce the odds of mild or severe preeclampsia through reduction of serum markers of cellular damage (DAMP) and inflammation. This is one of the first studies to examine associations between SCFA, DAMP and inflammation in preeclampsia. Ultimately, providing a better understanding of preeclampsia pathogenesis will allow researchers to differentiate subtypes and target specific pathways to improve prediction and clinical management.

Carmen Tekwe, PhD.

Novel Percentile-Based Statistical Methods to Model BMI Percentiles in Childhood Obesity

With this study, Dr. Tekwe will develop flexible statistical approaches to analyze data collected on elementary school-aged children in studying the impacts of a school-based intervention program to increase their daily physical activity and reduce the prevalence of childhood obesity and its related outcomes such as type 2 diabetes. It will develop more flexible and robust statistical methods and apply them to existing data from a standing desk study to determine how Total Daily Energy Expenditures (TDEE) influences future BMI percentiles among children. This will yield innovative statistical tools for assessing the impact of current TDEE on future BMI percentiles, and advance current knowledge of the impact of school-based environmental intervention measures to prevent obesity in children.

Board of Regents Approved Centers

Center for Community Health Development

Established initially as a CDC funded
Prevention Research Center

Co-Directors: Kenneth McLeroy, PhD & Jim Burdine, DrPH



Southwest Rural Health Research Center

Established with funding initially from
The Federal Office of Rural Health Policy

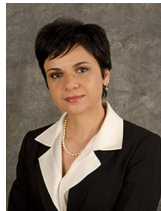
Director: Jane Bolin, PhD, JD, RN



Center for Health Organization Transformation

NSF Industry/University Cooperative Research Centers Program

Director, PI: Bitia Kash, PhD



USA Center for Rural Public Health Preparedness

CDC funded Center for Public Health Preparedness

Director, PI: Barbara Quiram, PhD



The Ergonomics Center

Funded by multiple external grants

Director, PI: Mark Benden, PhD



Research Programs

Program on Disability Research & Community-Based Care

Director: Darcy McMaughan, PhD



Program for Reproductive & Child Health

Director: Brandie Taylor, PhD



Program on Healthy Aging

Director: Marcia Ory, PhD, MPH



Program for Health Policy Research

Director: Michael Morrissey, PhD



Program for Research & Outreach Engagement on Nutrition & Health Disparities Solutions

Director: Joseph Sharkey, PhD, MPH



Program on Public Health & Water Research

Director: Virender Sharma, PhD



Program for Asthma Research & Education

Director: Jenny Carillo, MD, ScD



Active Grants & Contracts CY2015

Alaniz, Angie. *Evaluation of the Madison Outreach and Services through Telehealth Network*, Madison County Government, \$112,599 (2012-2016) [CCHD].

Alaniz, Angie. *Using a Community Health Development Approach to Increase Access to Opportunities for Physical Activity (Prevention Research Center Core Research Project #2)*, CDC, \$309,717 (2011-2015) [CCHD].

Benden, Mark. *Small Business Innovation Research Award (SBIR) PHASE II: Development of a Stand-Biased School Desk to Reduce Childhood Obesity*, subaward from Positive Motion, LLC (prime is CDC), \$421,669 (2013-2016) [ERGC].

Benden, Mark. *Texas A&M University Occupational Safety & Health Training Program (competitive 5 year renewal)*, NIOSH, \$516,453 (2012-2017) [ERGC].

Benden, Mark. *Can This Process Be Re-purposed to Refill Depleted Below Surface Aquifers? Texas A&M University Area 41 Award*, \$25,000 (2015-2016) [ERGC].*

Benden, Mark. *External Safety Support*, Texas Transportation Institute, \$60,000 (2010-2016).

Bolin, Jane, Co-PI (McClellan, David, PI). *Enhanced Colorectal Cancer Screening in a Family Medicine Residency Program Serving Low-Income & Underserved: Translating Research into Practice*, Cancer Prevention & Research Institute of Texas (CPRIT), \$2,748,008 (2011-2015) [SRHRC].

Bolin, Jane, Co-PI (McClellan, David, PI). *Enhanced Breast & Cervical Cancer Prevention for Low-Income and Underserved Using Trans-disciplinary Collaboration in a Family Medicine Setting*, Cancer Prevention & Research Institute of Texas (CPRIT), \$1,499,993 (2013-2016) [SRHRC].

Bolin, Jane, Co-PI (McClellan, David, PI). *Continuation and Expansion of Texas A&M's Colorectal Cancer Screening, Training, Education, and Prevention Program*, Cancer Prevention & Research Institute of Texas (CPRIT), \$1,500,000 (2014-2017) [SRHRC].

Bolin, Jane. *CPRIT Dissemination: Training CHWs for Cancer Education and Navigation*, Texas Cancer Prevention and Research Institute of Texas (CPRIT), \$300,000 (2015-2017) [SRHRC] [CCHD].*

Carrillo Zuniga, Genny. *Planning Model for a Texas-Mexico Border Information Exchange Program*, Border Environment Cooperation Commission, \$17,600 (2014-2015).

Carrillo, Genny. *Community-based Pediatric Asthma Education and Intervention*, Knapp Community Care Foundation, \$374,042 (2015-2017).*

Carrillo, Genny. *Asthma Education and Outreach Delivery Model Program*, Raul Tijerina Jr. Foundation, \$25,000, 2015-2016.*

Cizmas, Leslie. *A Multi-Step Approach to Assessing the Toxicity of Drinking Water Disinfection By-Products Following Chlorination, Chloramination or a Novel Ferrate Disinfection Process*, The Center for Translational Environmental Health Research (CTEHR) Pilot Project Program, \$71,704.*

Colwell, Brian. *Youth Tobacco Education Project*, Texas Department of State Health Services (DSHS), \$657,405 (2003-2016).

Colwell, Brian. *ConDev, Texas A&M University & USAID/DRC Partnership: Evaluation of the Kinshasa School of Public Health*, United States Agency for International Development (USAID), \$293,789 (2015-2016).*

Cote, Murray. *VEMEC IPA: VA Emergency Management and Evaluation Center Interagency Personnel Agreement*, U.S. Department of Veteran's Affairs, \$81,728 (2011-2016).

Garcia, Tanya. *Improved Definition and Prediction of Huntington's Disease Motor-Onset Using Advanced Statistical Methods*, Huntington's Disease Society of America, \$150,000 (2013-2016).

Garcia, Tanya. *Identifying High-Dimensional Neuroimaging Biomarkers Associated with Huntington's Disease Motor-Onset*, Delta Omega Research Enhancement and Development Initiative Program (REDI), School of Public Health Pilot Funding Program, \$25,000 (2015-2016).*

Garney, Whitney. *Tobacco Quit Line Evaluation and Outreach Assistance [Phase I]*, Texas Department of Aging and Disability Services, \$69,895 (2015) [CCHD].*

Garney, Whitney. *Texas Tobacco Quit Line [Phase II]*, Texas Department of Aging and Disability Services, \$220,000 (2015-2016) [CCHD].*

Gregory, Sean. *Review of Texas Medicaid Acute Care Therapy Programs*, Texas Health and Human Services, Commission, (2014-2015), \$250,557 (2014-2015).

Griffith, Jennifer (Barbara Quiram, Co-PI). *TXPHRAT Mitigation Planning*, Texas Department of State Health Services, \$298,581 (2014-2015).

Griffith, Jennifer. *Infectious Disease Panel Session*, Texas Department of State Health Services, \$210,419 (2015-2016) [USA].*

Hong, Y. Alicia. *Designing and Testing Mobile Application for Older Cancer Survivors to Use Community Resources*, Scott & White Health System, \$50,000 (2011-2015).

Hong, Alicia. *Health-Related Mobile Use Among Older Adults with Chronic Conditions*, Delta Omega Research Enhancement and Development Initiative Program (REDI), School of Public Health Pilot Funding Program, \$25,000 (2015-2016).*

Horney, Jennifer. *Texas Census Research Data Center: Quantifying the Health Effects of Disasters on Vulnerable Populations*, Texas Census Research Data Center, \$4,000 (2014-2015).

Horney, Jennifer. *Pilot Test of Health Community Recovery Indicators*, subaward from University of North Carolina at Chapel Hill (prime is DHS Federal Emergency Management Agency FEMA), \$32,861 (2014-2015).

Horney, Jennifer. *The Effects of Pre-Disaster Recovery Plan on Post-Disaster Recovery among Socially Vulnerable Populations*, National Science Foundation, \$83,085 (2014-2016).

Horney, Jennifer. *Measuring Recovery through Healthy Community Indicators*, subaward from University of North Carolina (prime is Department of Homeland Security), \$34,736 (2014-2015).

Horney, Jennifer. *Utilizing Secondary Data to Assess the Health and Health System Impacts of Natural and Technological Disasters in the Gulf*, National Academy of Science, \$181,206 (2015-2017).*

Johnson, Natalie. *Biomarkers of Prenatal Exposure to Particulate Air Pollution in U.S. and Chinese Populations*, Texas A&M University National Natural Science Foundation of China (NSFC) Collaborative Research Grant Program, \$25,000 (2014-2015).

Johnson, Natalie. *Strategic Research Development in Health and Transportation*, Texas A&M Transportation Institute, Texas A&M Health Science Center, and Johns Hopkins University, \$60,000 (2014-2015).

Johnson, Natalie. *Impact of In Utero Aerosol Exposure on Asthma Susceptibility*, Delta Omega Research Enhancement and Development Initiative Program (REDI), School of Public Health Pilot Funding Program, \$25,000 (2015-2016).*

Kash, Bitu. *Center for Health Organization Transformation (CHOT) Phase I*, National Science Foundation I/UCRC, \$460,999 (2008-2015) [CHOT].

Kash, Bitu. *Center for Health Organization Transformation (CHOT) Renewal*, National Science Foundation I/UCRC, \$379,125 (2014-2019) [CHOT].

Kash, Bitu. *Innovative Managing Director*, National Science Foundation I/UCRC, \$576,815 (2014-2019) [CHOT].

Kash, Bitu. *Research Experiences for Undergraduates (REU)*, National Science Foundation I/UCRC, \$16,000 (2014-2019) [CHOT].

Kash, Bitu. *Leveraging a Studer Group Intervention for Continuous Innovation*, Student Group, \$150,000 (2012-2015) [CHOT Member].

Kash, Bitu. *Anatomy, Evolution, and the Future of the Perioperative Surgical Home (PSH): Development of a Framework for the PSH Design and Action*, American Society of Anesthesiologists, \$150,000 (2013-2016) [CHOT Member].

Kash, Bitu. *A Hospital Integrated Primary Care Provider (PCP) Network Model*, Texas Children's Hospital, \$150,000 (2013-2016) [CHOT Member].

Kash, Bitu. *Translating UBRICA's Vision for Kenya to Evidence-based Strategy and Funding*, UBRICA, \$150,000 (2015-2018) (CHOT member).*

Active Grants & Contracts CY2015

Kash, Bitia. *Translating the Healthy South Texas Vision into a Framework for Action and Research*, Coastal Bend Health Education Center, \$150,000 (2015-2018) (CHOT member).*

Kash, Bitia. *Customer Service at Central Texas Veterans Health Care System's Austin Outpatient Clinic (VA)*, Central Texas Veterans Health Care System, \$150,000 (2015-2018) (CHOT member).*

Kash, Bitia. *The Role of Disparities in 30 -Day Hospital Readmission Rates*, Main Line Health, \$150,000 (2015-2018) (CHOT member).*

Maddock, Jay. *Social Epidemiology Project*, subaward from the University of Hawaii (prime is Hawaii Department of Health), \$11,506 (2015).*

McDonald, Thomas. *Public Health Traineeship*, Health Resources and Services Administration (HRSA), \$148,359, (2014-2016).

McKyer, E. Lisako. *Healthy Texas Babies Coalition Evaluation*, Texas Department of State Health Services, \$400,000 (2015-2017).*

McLeroy, Kenneth. *Prevention Research Center (PRC). Center for Community Health Development 5 year renewal*, CDC, \$7.7M (2009-2015) [CCHD].

McLeroy, Kenneth. *Develop and Translate Medical Technology to Reduce Health Disparities*, subaward from The American Heart Association, (prime is CDC), \$452,381, (2014-2017) [CCHD].

McLeroy, Kenneth. *Integrating Teen Pregnancy Prevention Innovative Practices (iTIP)*, Office of Adolescent Health, \$7,500,000 (2015-2020) [CCHD].*

McMaughan, Darcy. *Nursing Home Antibiotic Stewardship Tools and Guide*, Task order from American Institutes for Research (prime is AHRQ), \$206,675 (2013-2016).

McMaughan, Darcy. *Nursing Care Assessment Form Project*, Texas Health and Human Services Commission (TXHHSC), \$927,278 (2010-2015).

McMaughan, Darcy. *STAR KIDS*, Texas Health and Human Services Commission (TXHHSC), \$1,214,885 (2014-2017).

Mehta, Ranjana. *Revised Force Endurance Models for the US Workforce*, subaward from Research Foundation of State University of New York (SUNY) [Prime is CDC-NIOSH], \$36,375 (2014-2016).

Mehta, Ranjana. *Obesity, Stress, and Neuromuscular Function in the Elderly*, NIH National Institute on Aging, \$347,527 (2015-2018).*

Mehta, Ranjana (Co-PI). *Computer/Video Games, Hemodynamics, and ADHD*. Texas A&M PESCA Grant Program, \$17,953 (2015-2016).*

Mehta, Ranjana. *Brain Imaging Correlates of Precision Motor Control in Major Depression*, Hogg Foundation, \$19,250 (2015-2016).*

Mehta, Ranjana. *Obesity, Stress & Mobility Outcomes in Older Adults*, Delta Omega Research Enhancement and Development Initiative Program (REDI), School of Public Health Pilot Funding Program, \$25,000 (2015-2016).*

Millard, Ann. *Loteria De Comadres Contra El Cancer*, subaward from Mercy Ministries of Laredo (prime is Cancer Prevention & Research Institute of Texas [CPRIT]), \$58,072, (2012-2015).

Millard, Ann. *A Promotora-led Walking Group and Healthy Eating Program for Social Networks in Colonias*, Knapp Community Care Foundation, \$342,127 (2015-2017).*

Millard, Ann. *Care for Hispanic Patients (CHISPA): Integrated Behavioral Health to Reduce Risk of Diabetes & Depression*. Lower Rio Grande Valley Community Health, \$31,856 (2015-2016).*

Miller Nimmons, Katherine. *Colonia Integrated Care Program: Valley Interprofessional Development and Services (VIDAS)*. The University of Texas San Antonio (prime is United Health Foundation), \$6,286 (2015) [CCHD].*

Miller Nimmons, Katherine. *Colonia Integrated Care Program: Valley Interprofessional Development and Services (VIDAS)*. The University of Texas Rio Grande (prime is United Health Foundation), \$29,076 (2015) [CCHD].*

Morrisey, Michael. *All Kids Proposal for Special Projects*, Subaward from The University of Alabama Birmingham (prime is Alabama Department of Health, Centers for Medicare and Medicaid Services) \$41,471 (2015).*

Nobles, Robert. *External Evaluation of the AFC-Personal Responsibility Education Program (PREP)*, Ambassadors for Christ, Inc., \$129,000 (2012-2015).

Ohsfeldt, Robert. *Technology Directed Advanced Radiation Therapy of Lung Cancer*, subaward from the University of Texas Southwestern Medical Center (prime is Cancer Prevention & Research Institute of Texas CPRIT), \$232,440, (2011-2016).

Ohsfeldt, Robert and Kum, Hye Chung. *Evaluation of Texas 1115 Medicaid Transformation Waiver*, Texas Health and Human Services Commission (TxHHSC), \$2,550,000 (2013-2017).

Ohsfeldt, Robert and Kum, Hye Chung. *Integration of Primary Healthcare into Behavioral Healthcare*, Texas Health and Human Services Commission (TxHHSC), \$578,628 (2014-2017).

Ory, Marcia G. *Texas Childhood Obesity Prevention Policy Evaluation (T-COPPE II): Statewide Evaluations of the Implementation of TX SRTS and WIC Health Food Policies*, The Robert Wood Johnson Foundation, \$150,000 (2013-2015).

Ory, Marcia G. *South, West & Central Consortium-Geriatric Education Center of Texas*, subaward from The University of Texas San Antonio (prime is HRSA), \$131,799, (2010-2015).

Ory, Marcia G. *The Central Texas Cancer Prevention and Control Research Network (CTxCPCRN)*, CDC Special Interest Project, \$1,403,650 (2009-2015) [CCHD].

Ory, Marcia G. *Impact, Sustainability & Scalability of Multi-component Falls Prevention Programs*, CDC Special Interest Project \$1,174,608 (2011-2015) [CCHD].

Ory, Marcia G. *The Policies, Programs, and Partners for Falls Prevention (PPFP)*, CDC Special Interest Project, \$799,982 (2012-2015) [CCHD].

Ory, Marcia G. *It Takes a Village- A Multi-Level Evaluation of the State Driven Fall Prevention Project*, Special Interest Project (SIP), subaward from University of North Carolina (prime is CDC), \$204,744 (2014-2017).

Ory, Marcia G. (Co-PI) and **Carol Rice** (PI). *Working on Wellness (WOW)*, Centers for Disease Control & Prevention, \$2.49M, (2014-2017).

Ory, Marcia G. and **Hong, Alicia.** *Center for Healthy Active Living*, Texas A&M Engineering Seed Grant Program, \$50,000 (2014-2016).

Ory, Marcia G. *Brazos Valley Area Agency on Aging Evidence Based Programs for Seniors*, Brazos Valley Council of Governments Area Agency on Aging, \$44,200 (2013-2018).

Ory, Marcia G. *Physical Activity Impacts of a Planned Activity-Friendly Community: The What, Where, When, and Why of Environmental Approaches to Obesity Prevention*, National Institutes of Health, \$2,684,000 (2015-2020).*

Ory, Marcia G. *Falls Reduction Education and Empowerment (FREE) Partnership*, Subaward from United Way Tarrant County (prime is Administration on Aging), \$163,083 (2015-2020).*

Ory, Marcia G. *Texans Working Together for a Falls Free Tomorrow*, Wellmed Charitable Foundation, \$20,000 (2015-2016).*

Ory, Marcia G. *Texas Comprehensive Cancer Survivorship Education Program*, Texas Department of State Health Services, \$35,430 (2015-2016).*

Ory, Marcia G. *Texercise Select: Building the Evidence-Base*, Texas Department of State Health Services, \$405,895 (2015-2017).*

Peres, S. Camille. *Smart Procedures™ Usability Testing*, Applied Technical Resources (ATR, Inc), \$142,300 (2014-2016).

Peres, S. Camille. *Understanding Workload for Remote Physiological Monitoring Workers: Maximizing Worker Efficiency and Maintaining Patient Safety*, Mayo Clinic, \$5,000 (2014-2016).

Active Grants & Contracts CY2015

Peres, S. Camille. Software Biomechanics: *Does the Interaction Design of Software Impact Ergonomic Risk Factors*, Office of Ergonomic Research, \$26,500, (2013-2015).

Peres, S. Camille. *Advanced Procedures Research Study Phase I*, TEES/Chevron Technology Ventures, \$20,856 (2014-2015).

Peres, S. Camille. *Advanced Procedures Research Study Phase II, A Human Factored Approach*. TEES/Chevron Technology Ventures, \$37,464 (2015-2016).*

Peres, S. Camille. *Advanced Procedures Research Study Phase II, A Human Factored Approach*. TEES/Exxon Mobil Production Company, \$37,464 (2015-2016).*

Peres, S. Camille. *Advanced Procedures Research Study Phase III, A Human Factored Approach*. TEES/NOVA Chemicals, \$37,500 (2015-2016).*

Peres, S. Camille. *Exploring Variables Associated with User's Satisfaction, Performance, and Physiological Responses Based on Keyboard Attributes*, Hewlett Packard, \$34,998 (2015-2016).*

Peres, S. Camille. *Procedural Warnings*, Wright State University Center for Operator Performance, \$36,807 (2015-2016).*

Pickens, Adam. *Optimization of Hardware for Optimal Data Collection Using a Mobile Hearing Screening Application (hEAR)*. Subaward from University of Texas Health Science Center Houston (prime is National Institute for Occupational Safety and Health), \$10,000 (2015-2016).*

Quiram, Barbara. *Training & Education Collaborative System - Preparedness and Emergency Response Learning Center (TECS PERLC)*, CDC, \$2.47M (2010-2015) [USA].

Quiram, Barbara. *High Consequence Infectious Disease Planning Table Top Exercises*. Texas Department of State Health Services, 499,988 (2015-2016) [USA].*

Radcliff, Tiffany. *Rural Lifestyle Eating and Activity Program (Rural LEAP)*, subaward from the University of Florida, (prime is NIH) \$73,253 (2013-2018).

Radcliff, Tiffany. *VEMEC IPA: VA Emergency Management and Evaluation Center Interagency Personnel Agreement*, U.S. Department of Veteran's Affairs, \$185,931 (2011-2016).

Rene, Antonio. *Renewal University Affiliation for Principles of Military Preventative Medicine Program of Instruction*, DOD-Army-U.S. Medcom-center for Health Care Contracting, \$693,393 (2013-2016).

Sharkey, Joseph R. *Salud Para Usted y Su Familia [Health for You and Your Family]: Family-Focused Childhood Obesity Prevention through a Systems-Oriented Multilevel Approach in Arizona, New Mexico, and Texas Border Area*, United States Department of Agriculture USDA National Institute of Food and Agriculture, \$4,904,638 (2015-2020).*

Sharma, Virender. *Collaboration Research on Oxidative Elimination of Cyanotoxins by Ferrates (VI, VI, and IV)*, National Science Foundation, \$148,920 (2014-2016).

Shipp, Eva. *Neuromotor Function and Work Injury Risk among Hispanic Adolescent Farmworkers (a.k.a. The HIP Project)*. The Southwest Center for Agricultural Health Injury Prevention and Education at The University of Texas Health Center at Tyler (prime is NIOSH/ CDC), \$724,345 (2011-2016).

Taylor, Brandie. *Host Genetic Susceptibility to Chlamydia-Associated Reproductive Morbidity*, American Sexually Transmitted Diseases Association (ASTDA), \$100,000 (2014-2016).

Taylor, Brandie. *Identification of Mycoplasma Genitalium and Its Correlates in Mexican Women*, Texas A&M and Consejo Nacional del Ciencia y Tecnologia (CONACYT) Collaborative Research Grant Program, \$24,000 (2014-2015).

Taylor, Brandie. *The Role of Early Pregnancy Serum Markers of Cellular Damage, Innate Immune Signaling and Angiogenesis in Preeclampsia Subtypes*, The Discovery Foundation, \$181,507 (2015-2018).*

Taylor, Brandie. *Identifying Biomarkers and Genetic Risk Factors Predictive of Reproductive Sequelae*. Subaward from University of North Carolina (prime is National Institutes of Health) \$56,106 (2015-2017).*

Taylor, Brandie. *Maternal and Child Health Public Health Training Program*. Health Resources and Services Administration, \$350,000 (2015-2020).*

Taylor, Brandie. *Short-Chain Fatty Acids in Adverse Pregnancy Outcomes*, Delta Omega Research Enhancement and Development Initiative Program (REDI), School of Public Health Pilot Funding Program, \$25,000 (2015-2016).*

Tekwe, Carmen (Co-PI). *Validation of a Face-to-Face Instrument to Measure Medication Literacy*, Texas A&M University PESCA Program, \$24,737 (2015).*

Tekwe, Carmen. *Novel Percentile-Based Statistical Methods to Model BMI Percentiles in Childhood Obesity*, Delta Omega Research Enhancement and Development Initiative Program (REDI), School of Public Health Pilot Funding Program, \$25,000 (2015-2016).*

Xu, Xiaohuo, K award: *Associations between Ambient Air Pollution and Adverse Birth Outcomes in Florida*, National Institute of Environmental Health Sciences, \$629,535 (2011-2016).*

Projects Key:

* Denotes newly awarded in CY2015.

[] Denotes Center affiliated projects

[CCHD] = Center for Community Health Development

[CHOT] = Center for Health Organization Transformation

[ERGC] = The Ergonomics Center

[SRHRC] = Southwest Rural Health Research Center

[USA] = USA Center for Rural Public Health Preparedness

Publications CY 2015

- (1) Adepouju OE, **Bolin JN**, Booth EA, **Zhao H**, Lin SH, Phillips CD, **Ohsfeldt RL**. Is diabetes color-blind? Growth of prevalence of diagnosed diabetes in children through 2030. *Population Health Management* 2015 Jun;18(3):172-178.
- (2) Ahn S, Smith ML, Altpeter M, Belza B, Post L*, **Ory MG**. Methods for streamlining intervention fidelity checklists: an example from the chronic disease self-management program. *Frontiers in Public Health* 2015 Apr 27;2:294.
- (3) Ahn S, Smith ML, Altpeter M, Post L*, **Ory MG**. Healthcare cost savings estimator tool for chronic disease self-management program: a new tool for program administrators and decision makers. *Frontiers in Public Health* 2015 Apr 27;3:42.
- (4) Amuta AO, Barry AE, **McKyer J**. Risk Perceptions for Developing Type 2 Diabetes among Overweight and Obese Adolescents with and without a Family History of Type 2 Diabetes. *American Journal of Health Behavior* 2015;39(6):786-793.
- (5) Amuta AO, Jacobs W, Idoko EE, Barry AE, **McKyer ELJ**. Influence of the Home Food Environment on Children's Fruit and Vegetable Consumption A Study of Rural Low-Income Families. *Health Promotion Practice* 2015:1524839915589733.
- (6) **Appiah B**, Gastel B, **Burdine JN**, Russell LH. Science reporting in Accra, Ghana: sources, barriers and motivational factors. *Public Understanding of Science* 2015 Jan;24(1):23-37.
- (7) Arjunan KP, **Sharma VK**, Ptasińska S. Effects of Atmospheric Pressure Plasmas on Isolated and Cellular DNA--A Review. *International Journal of Molecular Sciences* 2015 02;16(2):2971-3016.
- (8) Bang H, **Zhao H**. Median-based incremental cost-effectiveness ratios with censored data. *Journal of Biopharmaceutical Statistics* 2015: 1-13.
- (9) Basu R, **Ory MG**, **Towne SD, Jr**, Smith ML, Hochhalter AK, Ahn S. Cost-effectiveness of the chronic disease self-management program: implications for community-based organizations. *Frontiers in Public Health* 2015 Apr 27;3:27.
- (10) Becker DJ, Blackburn J, **Morrisey MA**, Sen B, Kilgore ML, Caldwell C, Sellers C, Menachemi N. Enrollment, expenditures, and utilization after CHIP expansion: evidence from Alabama. *Academic Pediatrics* 2015 May-Jun;15(3):258-266.
- (11) Behnia F, **Taylor BD**, Woodson M, Kacerovsky M, Hawkins H, Fortunato SJ, Saade GR, Menon R. Chorionic membrane senescence: a signal for parturition? *American Journal of Obstetrics and Gynecology* 2015 Sep;213(3):359.e1-359.16.
- (12) Bellingar TA, **Benden ME**. New ANSI/BIFMA Standard for Testing of Educational Seating. *Ergonomics in Design: The Quarterly of Human Factors Applications* 2015;23(2): 23-27.
- (13) Biglan KM, Shoulson I, Kiebertz K, Oakes D, Kayson E, Shinaman MA, **Zhao H**, Romer M, Young A, Hersch S. Clinical-Genetic Associations in the Prospective Huntington at Risk Observational Study (PHAROS): Implications for Clinical Trials. *JAMA Neurology* Epub Nov 16 2015.
- (14) **Bolin J**, Bellamy G, **Ferdinand A**, Ojinnaka C*. *Rural Access to Quality Health Insurance..* In: **Bolin J**, Bellamy G, **Ferdinand A**, **Kash B**, Helduser J, editors. *Rural Healthy People 2020: A Companion Document to Healthy People 2020*. Vol.1 College Station, TX.: Texas A&M University Health Science Center, Southwest Rural Health Research Center.; 2015. p. 1-11.
- (15) **Bolin J**, Bellamy G, **Ferdinand A**, **Kash B**, Helduser J, editors. *Rural Healthy People 2020: A Companion Document to Healthy People 2020*. Volume 2. College Station, Texas: The Texas A&M Health Science Center School of Public Health, Southwest Rural Health Research Center.; 2015.
- (16) **Bolin J**, Bellamy G, **Ferdinand A**, **Kash B**, Helduser J, editors. *Rural Healthy People 2020: A Companion Document to Healthy People 2020*. Volume 1. College Station, Texas: The Texas A&M Health Science Center School of Public Health, Southwest Rural Health Research Center.; 2015.
- (17) **Bolin J**, Schulze A, Helduser J, and **Ory M**. *The Burden of diabetes in rural America..* In: **Bolin J**, Bellamy G, **Ferdinand A**, **Kash B**, Helduser J, editors. *Rural Healthy People 2020: A Companion Document to Healthy People 2020*. Vol.1 College Station, TX.: Texas A&M University Health Science Center, Southwest Rural Health Research Center.; 2015. p. 43-54.
- (18) **Bolin JN**, Bellamy GR, **Ferdinand AO**, Vuong AM, **Kash BA**, Schulze A, Helduser JW. *Rural Healthy People 2020: New Decade, Same Challenges.* *Journal of Rural Health* 2015 Summer;31(3):326-333.
- (19) Boutaugh M, Jenkins S, Kulinski K, Lorig K, **Ory M**, Smith M. Closing the Disparity Gap: The Work of the Administration on Aging. *Generations* 2014 4;38(4):107-118.
- (20) Brown SA, Becker BJ, Garcia AA, Brown A, **Ramirez G**. Model-driven meta-analyses for informing health care: a diabetes meta-analysis as an exemplar. *Western Journal of Nursing Research* 2015 Apr;37(4):517-535.
- (21) Buchthal OV, **Maddock JE**. Mapping the Possibilities: Using Network Analysis to Identify Opportunities for Building Nutrition Partnerships Within Diverse Low-Income Communities. *Journal of Nutrition Education and Behavior* 2015 Jul-Aug;47(4):300-7.e1.
- (22) Bustillos BD, **Sharkey JR**. Development and Implementation of a Culturally and Linguistically Centered Nutrition Education Program for Promotoras de Salud (Community Health Workers) to Foster Community Health Education and Outreach in Texas Border Colonias. *Journal of Hunger & Environmental Nutrition* 2015 07/03;10(3):299-312.
- (23) Cai J, Chen R, Wang W, **Xu X**, Ha S, Kan H. Does ambient CO have protective effect for COPD patient? *Environmental Research* 2015 Jan;136:21-26.
- (24) Cantu A, Graham MA, **Millard AV**, Flores I, Mugleston MK, Reyes IY, Carbajal ES. Environmental Justice and Community Based Research in Texas Borderland Colonias. *Public Health Nursing* 2015.
- (25) **Carrillo G**, **Han D**, Lucio RL, Seol YH, Chong-Menard B, Smith K. Impacting Environmental and Public Health through the Use of Dual Targeted and Tailored Asthma Educational Interventions. *Journal of Environmental and Public Health* 2015;2015:476173.
- (26) **Carrillo G**, Spence-Almaguer E, Lucio RL, Chong-Menard B, Smith K. Improving Asthma in Hispanic Families Through a Home-Based Educational Intervention. *Pediatric Allergy, Immunology, and Pulmonology* 2015 09/01; 2016/02;28(3):165-171.
- (27) Cawley JH, **Morrisey MA**, Simon KI. The Earnings and Consulting Income of US Health Economists: Results from the 2012 Survey of the American Society of Health Economists. *American Journal of Health Economics* 2015 02/01; 2016/01;1(2):255-274.
- (28) Chang AL, Yoshino KD, Sentell T, Miyamura J, **Maddock J**, Pacheco M. Comparison of Cesarean Delivery Rates in Urban and Rural Hospitals [1]. *Obstetrics & Gynecology* 2015;125:1S.
- (29) Chen S, Rolfes J, **Zhao H**. Estimation of mean health care costs and incremental cost-effectiveness ratios with possibly censored data. *The Stata Journal* 2015:698.
- (30) Chen R, Qiao L, Li H, Zhao Y, Zhang Y, Xu W, Wang C, Wang H, Zhao Z, **Xu X**, Hu H, Kan H. Fine Particulate Matter Constituents, Nitric Oxide Synthase DNA Methylation and Exhaled Nitric Oxide. *Environmental Science & Technology* 2015 Oct 6;49(19):11859-11865.
- (31) Chen R, Zhao A, Chen H, Zhao Z, Cai J, Wang C, Yang C, Li H, **Xu X**, Ha S, Li T, Kan H. Cardiopulmonary benefits of reducing indoor particles of outdoor origin: a randomized, double-blind crossover trial of air purifiers. *Journal of the American College of Cardiology* 2015 Jun 2;65(21):2279-2287.
- (32) Chen R, Zhao Z, Sun Q, Lin Z, Zhao A, Wang C, Xia Y, **Xu X**, Kan H. Size-fractionated particulate air pollution and circulating biomarkers of inflammation, coagulation, and vasoconstriction in a panel of young adults. *Epidemiology* 2015 May;26(3):328-336.
- (33) Chen W, Fang Y, Mao F, Hao S, Chen J, Yuan M, Han Y, **Hong YA**. Assessment of Disability among the Elderly in Xiamen of China: A Representative Sample Survey of 14,292 Older Adults. *PLoS One* 2015 Jun 30;10(6):e0131014.
- (34) Cho J, **Ory MG**, Stevens AB. Socioecological factors and positive aspects of caregiving: findings from the REACH II intervention. *Aging & Mental Health* 2015 Jul 27:1-12.
- (35) Cho J, Smith ML, Ahn S, Kim K, Appiah B, **Ory MG**. Effects of an Evidence-Based Falls Risk-Reduction Program on Physical Activity and Falls Efficacy among Oldest-Old Adults. *Frontiers in Public Health* 2015 Apr 27;2:182.

Publications CY 2015

- (36) Cho J, Smith ML, Shubert TE, Jiang L, Ahn S, **Ory MG**. Gait Speed among Older Participants Enrolled in an Evidence-Based Fall Risk Reduction Program: A Subgroup Analysis. *Frontiers in Public Health* 2015 Apr 27;3:26.
- (37) Choy LB, Smith HH, Espiritu J, Higa E, Lee T, **Maddock J**. Insights in Public Health: Initiating Bicycle Sharing in Hawai'i: Lessons Learned from a Small Pilot Bike Share Program. *Hawai'i Journal of Medicine & Public Health* 2015 10;74 (10):348-351.
- (38) Cilenti D, **Kum HC**, Wells R, Whitmire JT, Goyal RK*, Hillemeier MM. Changes in North Carolina maternal health service use and outcomes among medicaid-enrolled pregnant women during state budget cuts. *Journal of Public Health Management & Practice* 2015 Mar-Apr;21 (2):208-213.
- (39) **Cizmas L**, Ackerman L, Donnelly DA, Donnelly KC, **McDonald TJ**. Measurement of Organophosphate Pesticides, Organochlorine Pesticides, and Polycyclic Aromatic Hydrocarbons in Household Dust from Two Rural Villages in Nepal. *Journal of Environmental & Analytical Toxicology* 2015;5(261):2161-0525.100026.
- (40) **Cizmas L**, **Sharma V**, Gray C, **McDonald T**. Pharmaceuticals and personal care products in waters: occurrence, toxicity, and risk. *Environmental Chemistry Letters* 2015 12;13 (4):381-394.
- (41) Cline KM*, Roopani R, **Kash BA**, Vetter TR. Residency board certification requirements and preoperative surgical home activities in the United States: comparing anesthesiology, family medicine, internal medicine, and surgery. *Anesthesia & Analgesia* 2015 Jun;120(6): 1420-1425.
- (42) Dean WR, **Sharkey JR**, Cosgriff-Hernandez K, Martinez AR, Ribardo J, Diaz-Puentes C. "I Can Say that We Were Healthy and Unhealthy". *Food, Culture & Society* 2010 12/01;13(4):573-594.
- (43) Diep CS, Foster MJ, **McKyer ELJ**, Goodson P, Guidry JJ, Liew J. What are Asian-American youth consuming? a systematic literature review. *Journal of Immigrant and Minority Health* 2015;17 (2):591-604.
- (44) Diep CS, Lu W, **McKyer J**, Goodson P, Guidry JJ, Murano PS, Liew J. Influences of Fruit and Vegetable Intake among Asian Youth on Texas WIC. *Health Behavior and Policy Review* 2015;2(6):429-437.
- (45) Dornhecker M, Blake JJ, **Benden M**, **Zhao H**, Wendel M. The effect of stand-biased desks on academic engagement: An exploratory study. *International Journal of Health Promotion and Education* 2015;53(5):271-280.
- (46) Dutta EH, Behnia F, Boldogh I, Saade GR, **Taylor BD**, Kacerovsky M, Menon R. Oxidative stress damage-associated molecular signaling pathways differentiate spontaneous preterm birth and preterm premature rupture of the membranes. *Molecular Human Reproduction* 2015 Dec;22 (2):143-157.
- (47) **Ferdinand A**, Johnson L, Brown Speights J, Taite A, Myers K, Speights A, et al. *Access to Quality Health Services in Rural Areas – Primary Care: A Literature Review..* In: **Bolin J**, Bellamy G, **Ferdinand A**, **Kash B**, Helduser J, editors. Rural Healthy People 2020: A Companion Document to Healthy People 2020. Vol.1 College Station, TX.: Texas A&M University Health Science Center, Southwest Rural Health Research Center.; 2015. p. 13-24.
- (48) **Ferdinand A**. *Social Determinants of Health: Implications for Rural America..* In: **Bolin J**, Bellamy G, **Ferdinand A**, **Kash B**, Helduser J, editors. Rural Healthy People 2020: A Companion Document to Healthy People 2020. Vol.2 College Station, TX.: Texas A&M University Health Science Center, Southwest Rural Health Research Center.; 2015. p. 95-107.
- (49) **Ferdinand A**, Hutchison L. *Immunization and Infectious Diseases..* In: **Bolin J**, Bellamy G, **Ferdinand A**, **Kash B**, Helduser J, editors. Rural Healthy People 2020: A Companion Document to Healthy People 2020. Vol.2 College Station, TX.: Texas A&M University Health Science Center, Southwest Rural Health Research Center.; 2015. p. 53-65.
- (50) **Ferdinand A**, Madkins J, **McMaughan D**, Schulze A. *Mental Health and Mental Disorders: A Rural Challenge.* In: **Bolin J**, Bellamy G, **Ferdinand AO**, **Kash BA**, Helduser J, editors. Rural Healthy People 2020: A Companion Document to Healthy People 2020. Vol.1 College Station, TX.: Texas A&M University Health Science Center, Southwest Rural Health Research Center.; 2015. p. 55-72.
- (51) **Ferdinand AO**, Menachemi N, Blackburn JL, Sen B, Nelson L, **Morrisey M**. The impact of texting bans on motor vehicle crash-related hospitalizations. *American Journal of Public Health* 2015 May;105(5):859-865.
- (52) Fielding JE, Rimer BK, Johnson RL, Orleans CT, Calonge N, Clymer JM, Glanz K, Goetzel RZ, Green LW, **Ramirez G**, Pronk NP, Community Preventive Services Task Force. Recommendation to Reduce Patients' Blood Pressure and Cholesterol Medication Costs. *Preventing Chronic Disease* 2015 Nov 25;12:E209.
- (53) Forjuoh S, Helduser J, **Bolin J**, **Ory M**. Challenges Associated with Multi-institutional Multi-site Clinical Trial Collaborations: Lessons from a Diabetes Self-Management Interventions Study in Primary Care. *Journal of Clinical Trials* 2015(5: 219).
- (54) Frentzel E, Frentzel E, Mangrum R, **McMaughan D**, Stephens J, Perfetto D. Developing a Guide to Nursing Home Antimicrobial Stewardship. *Journal of the American Medical Directors Association* 2015;16 (3):B12.
- (55) Gan W, **Sharma VK**, Zhang X, Yang L, Yang X. Investigation of disinfection byproducts formation in ferrate(VI) pre-oxidation of NOM and its model compounds followed by chlorination. *Journal of Hazardous Materials* 2015 17/15;292:197-204.
- (56) **Garcia TP**, Ma Y. Optimal Estimator for Logistic Model with Distribution-free Random Intercept. *Scandinavian Journal of Statistics* 2015.
- (57) Garney WR, Beaudoin CE, Clark HR, Drake KN, Wendel ML, **McLeroy KR**, Castle BF, Ingram CM, Jackson V, Shaw RL. Using Community-Based Participatory Research to Disseminate a Mass Media Campaign Into Rural Communities. *Journal of Health Communication* 2015;20(7):799-806.
- (58) Garney WR, Young A, **McLeroy KR**, Wendel ML, Schudis E. A Qualitative Examination of Exergame Motivations in Geocaching. *Games for Health Journal* 2015 Nov 23.
- (59) Glaude-Hosch JA*, Smith ML, Heckman TG, Miles TP, Olubajo BA, **Ory MG**. Sexual Behaviors, Healthcare Interactions, and HIV-Related Perceptions Among Adults Age 60 Years and Older: An Investigation by Race/Ethnicity. *Current HIV Research* 2015;13(5):359-368.
- (60) Golden SD, **McLeroy KR**, Green LW, Earp JA, Lieberman LD. Upending the social ecological model to guide health promotion efforts toward policy and environmental change. *Health Education & Behavior* 2015 Apr;42(1 Suppl): 8S-14S.
- (61) **Gorman DM**. 'Everything works': the need to address confirmation bias in evaluations of drug misuse prevention interventions for adolescents. *Addiction* 2015;110(10):1539-1540.
- (62) **Gorman DM**. Analytic flexibility in the evaluation of the Drug Education in Victoria Schools (DEVS) programme. *The International Journal on Drug Policy* 2015 Aug;26(8):719-720.
- (63) **Gorman DM**. Flexible data analysis and evaluations of the SFP 10-14. *European Journal of Public Health* 2015 Oct;25(5):900-901.
- (64) Grabich S, **Horney J**, Konrad C, Lobdell D. Measuring the Storm: Methods of Quantifying Hurricane Exposure with Pregnancy Outcomes. *Natural Hazards Review* 18 November 2015.
- (65) Grabich SC, Robinson WR, Engel SM, Konrad CE, Richardson DB, **Horney JA**. County-level hurricane exposure and birth rates: application of difference-in-differences analysis for confounding control. *Emerging Themes in Epidemiology* 2015 Dec 22;12:19-015-0042-7. eCollection 2015.
- (66) Ha S, Hu H, Roth J, Kan H, **Xu X**. Associations Between Residential Proximity to Power Plants and Adverse Birth Outcomes. *American Journal of Epidemiology* 2015 Aug 1;182(3):215-224.
- (67) **Han D**, **Shipp EM**, **Gorman DM**. Evaluating the effects of a large increase in off-sale alcohol outlets on motor vehicle crashes: a time-series analysis. *International Journal of Injury Control and Safety Promotion* 2015;22(4):320-327.
- (68) Helduser J, Du Y, **Bolin J**. *Heart Disease and Stroke*. In: **Bolin J**, Bellamy G, **Ferdinand A**, **Kash B**, Helduser J, editors. Rural Healthy People 2020: A Companion Document to Healthy People 2020. Vol.1 College Station, TX.: Texas A&M University Health Science Center, Southwest Rural Health Research Center.; 2015. p. 83-95.

Publications CY 2015

- (69) Helduser J, **Ferdinand A, Bolin J**. *Physical Activity in Rural America..* In: **Bolin J**, Bellamy G, **Ferdinand AO, Kash BA**, Helduser J, editors. Rural Healthy People 2020: A Companion Document to Healthy People 2020. Vol.1College Station, TX.: Texas A&M University Health Science Center, Southwest Rural Health Research Center.; 2015. p. 95-106.
- (70) Hillemeier MM, Domino ME, Wells R, Goyal RK*, **Kum HC**, Cilenti D, Timothy Whitmire J, Basu A. Effects of maternity care coordination on pregnancy outcomes: propensity-weighted analyses. *Maternal and Child Health Journal* 2015 Jan;19(1):121-127.
- (71) Hinson E, Salmon J, **Benden M**, Clemes SA, Sudholz B, Barber SE, Aminian S, Ridgers ND. Standing Classrooms: Research and Lessons Learned from Around the World. *Sports Medicine* 2015:1-11.
- (72) **Hong YA**, Murga AL, Plankey-Videla N, Chavez MJ. HIV/STI risks in Latino day laborers in central Texas: a mixed-method study. *Health Psychology and Behavioral Medicine* 2015;3(1):315-322.
- (73) **Hong Y**, Goldberg D, **Ory M, Towne S**, Forjuoh S, Kellstedt D, Wang S. Efficacy of a Mobile-Enabled Web App (iCanFit) in Promoting Physical Activity Among Older Cancer Survivors: A Pilot Study. *JMIR Cancer* 2015;1(1):e7.
- (74) **Hong Y**, Chi P, Li X, Zhao G, Zhao J, Stanton B, Li L. Community-based family-style group homes for children orphaned by AIDS in rural China: an ethnographic investigation. *Health Policy and Planning* 2015 Sep;30(7):928-937.
- (75) **Hong Y**, Goldberg D, **Ory M, Towne S**, Forjuoh S, Kellstedt D, Wang S. Efficacy of a Mobile-Enabled Web App (iCanFit) in Promoting Physical Activity Among Older Cancer Survivors: A Pilot Study. *Journal of Medical Internet Research* 2015 06;17(6):1-1.
- (76) **Hong Y, Sharma VK**, Chiang P, Kim H. Fast-Target Analysis and Hourly Variation of 60 Pharmaceuticals in Wastewater Using UPLC-High Resolution Mass Spectrometry. *Archives of Environmental Contamination and Toxicology* 2015 11;69(4):525-534.
- (77) **Horney J**, Simon M, Grabich S, Berke P. Measuring Participation by Socially Vulnerable Groups in Hazard Mitigation Planning, Bertie County, North Carolina. *Journal of Environmental Planning and Management* 2015 06;58(5-6):802-818.
- (78) Hsu LJ, Pacheco MY, Crabtree C, **Maddock JE**. Using Concept Mapping in the Development of a School of Public Health. *Hawai'i Journal of Medicine & Public Health* 2015 Jul;74(7):224-229.
- (79) Hu H, Ha S, Henderson BH, Warner TD, Roth J, Kan H, **Xu X**. Association of Atmospheric Particulate Matter and Ozone with Gestational Diabetes Mellitus. *Environmental Health Perspectives* 2015 Sep;123(9):853-859.
- (80) Hu H, Odedina FT, Reams RR, Lissaker CT, **Xu X**. Racial Differences in Age-Related Variations of Testosterone Levels Among US Males: Potential Implications for Prostate Cancer and Personalized Medication. *Journal of Racial and Ethnic Health Disparities* 2015 Mar;2(1):69-76.
- (81) Hu H, Kan H, Kearney GD, **Xu X**. Associations between exposure to polycyclic aromatic hydrocarbons and glucose homeostasis as well as metabolic syndrome in nondiabetic adults. *Science of The Total Environment* 2015 2/1;505:56-64.
- (82) Hutt E, **Radcliff TA**, Henderson W, Maciejewski M, Cowper-Ripley D, Whitfield E. Comparing Survival Following Hip Fracture Repair in VHA and Non-VHA Facilities. *Geriatric Orthopaedic Surgery & Rehabilitation* 2015 Mar;6(1):22-27.
- (83) Ivy JS, **Horney J**, Maillard J. Using systems modeling to enhance public health preparedness. *Health Systems* 2015 print;4(1):1-4.
- (84) Jiang L, Smith ML, Chen S, Ahn S, Kulinski KP, Lorig K, **Ory MG**. The role of session zero in successful completion of chronic disease self-management program workshops. *Frontiers in Public Health* 2015 Apr 27;2:205.
- (85) Jiang L, Zhang B*, Smith ML, Lorden AL*, **Radcliff TA**, Lorig K, Howell BL, Whitelaw N, **Ory MG**. Concordance between Self-Reports and Medicare Claims among Participants in a National Study of Chronic Disease Self-Management Program. *Frontiers in Public Health* 2015 Oct 8;3:222.
- (86) Jin L, Zhang JJ, Pitts BG, Connaughton D, Swisher M, Holland S, **Spengler JO**. Factors associated with an athletic donor's intention to donate to green stadium initiatives of a collegiate athletic program. *International Journal of Event Management Research* 2015;10(1).
- (87) Johnson CE, Bush RL, Harman J, **Bolin J**, Hudnall G, Nguyen AM. Variation in Utilization of Health Care Services for Rural VA Enrollees With Mental Health-Related Diagnoses. *The Journal of Rural Health* 2015;31(3):244-253.
- (88) **Kash BA**, Hutchison L, Kaul S, Appiah P*, Challa S. *Rural Oral Health..* In: **Bolin J**, Bellamy G, **Ferdinand AO, Kash BA**, Helduser J, editors. Rural Healthy People 2020: A Companion Document to Healthy People 2020. Vol.2College Station, TX.: Texas A&M University Health Science Center, Southwest Rural Health Research Center.; 2015. p. 29-40.
- (89) **Kash BA, McMaughan D**, Hutchison L, and Tan D*. *Substance abuse trends in rural America..* In: **Bolin J**, Bellamy G, **Ferdinand AO, Kash BA**, Helduser J, editors. Rural Healthy People 2020: A Companion Document to Healthy People 2020. Vol.1College Station, TX.: Texas A&M University Health Science Center, Southwest Rural Health Research Center.; 2015. p. 73-82.
- (90) **Kum A**, Cline KM*, Timmons S, Roopani R, Miller TR. International comparison of preoperative testing and assessment protocols and best practices to reduce surgical care costs: a systematic literature review. *Advances in Health Care Management* 2015;17:161-194.
- (91) Kearney GD, **Xu X**, Balaney JAG, Allen DL, Rafferty AP. Assessment of personal protective equipment use among farmers in eastern North Carolina: a cross-sectional study. *Journal of Agromedicine* 2015;20(1):43-54.
- (92) Kegler MC, Carvalho ML, **Ory M**, Kellstedt D, Friedman DB, McCracken JL, Dawson G, Fernandez M. Use of Mini-Grant to Disseminate Evidence-Based Interventions for Cancer Prevention and Control. *Journal of Public Health Management and Practice* 2015 Sep-Oct;21(5):487-495.
- (93) Kim C, Panditi VR, Gardinali PR, Varma RS, Kim H, **Sharma VK**. Ferrate promoted oxidative cleavage of sulfonamides: Kinetics and product formation under acidic conditions. *Chemical Engineering Journal* 2015 /11/11;279:307-316.
- (94) Kim E, Davidson LA, **Zoh RS**, Hensel ME, Patil BS, Jayaprakasha GK, Callaway ES, Allred CD, Turner ND, Weeks BR, Chapkin RS. Homeostatic responses of colonic LGR5+ stem cells following acute in vivo exposure to a genotoxic carcinogen. *Carcinogenesis* Epub 2015 Dec 30
- (95) Kim H, **Hong Y**, Sang B, **Sharma VK**. Application of SPE followed by large-volume Injection GC/MS for the analysis of geosmin and 2-methylisoborneol in water. *Analytical Methods* 2015 08/21;7(16):6678.
- (96) Kortum P, **Peres SC**. Evaluation of Home Health Care Devices: Remote Usability Assessment. *JMIR Human Factors* 2015;2(1):e10.
- (97) Kristiansson M, Sorman K, **Tekwe C**, Calderon-Garciduenas L. Urban air pollution, poverty, violence and health--Neurological and immunological aspects as mediating factors. *Environmental Research* 2015 Jul;140:511-513.
- (98) Kulinski KP, Boutaugh M, Smith ML, **Ory MG**, Lorig K. Setting the stage: measure selection, coordination, and data collection for a national self-management initiative. *Frontiers in Public Health* 2015 Apr 27;2:206.
- (99) **Kum H**, Stewart C*, Rose R, Duncan D. Using big data for evidence based governance in child welfare. *Children and Youth Services Review* 2015;58:127-136.
- (100) Kutcher R, Moore-Monroy M, Bello E, Doyle S, Ibarra J, Kunz S, Munoz R, Patton-Lopez M, **Sharkey JR**, Wilger S, Alfero C. Promotores As Advocates for Community Improvement: Experiences of the Western States REACH Su Comunidad Consortium. *Journal of Ambulatory Care Management* 2015 Oct-Dec;38(4):321-332.
- (101) Lee WC, Phillips CD, **Ohsfeldt RL**. Do rural and urban women experience differing rates of maternal rehospitalizations? *Rural Remote Health*. 2015 Jul-Sep;15(3):3335.
- (102) Li X, Wang J, Rykov AI, **Sharma VK**, Wei H, Jin C, Liu X, Li M, Yu S, Sun C, Dionysiou DD. Prussian blue/TiO2 nanocomposites as a heterogeneous photo-Fenton catalyst for degradation of organic pollutants in water. *Catalysis Science & Technology* 2015 01;5(1):504.

Publications CY 2015

- (103) Lorden A*, Lin S, **Cote M**. Measures of success: The role of human factors in lean implementation in healthcare. *Quality Control and Applied Statistics* 2015;60(1):127-130.
- (104) Lu W, Diep CS, **McKyer ELJ**. Risk Factors for Childhood Obesity among Asian Americans: A Systematic Review of Literature and Recommendations for Health Care Research. *Journal of Health Care for the Poor and Underserved* 2015;26(2):171-190.
- (105) Lu W, **McKyer EL**, Lee C, **Ory MG**, Goodson P, Wang S. Children's active commuting to school: an interplay of self-efficacy, social economic disadvantage, and environmental characteristics. *International Journal of Behavioral Nutrition and Physical Activity* 2015 Feb 28;12:29-015-0190-8.
- (106) Lu W, **McKyer E**, **Dowdy D**, Evans A, **Ory M**, Hoelscher D, Wang S, Miao J*. Evaluating the Influence of the Revised Special Supplemental Nutrition Program for Women, Infants, and Children (WIC) Food Allocation Package on Healthy Food Availability, Accessibility, and Affordability in Texas. *Journal of the Academy of Nutrition and Dietetics* Epub 2015 Dec 8.
- (107) Machala L, Filip J, Pucek R, Tucek J, Frydrych J, **Sharma VK**, Zboril R. Potassium Ferrite (KFeO₂): Synthesis, Decomposition, and Application for Removal of Metals. *Science of Advanced Materials* 2015 -03-01T00:00:00;7(3):579-587.
- (108) Machala L, Prochazka V, Miglierini M, **Sharma VK**, Marusák Z, Wille H, Zboril R. Direct evidence of Fe(v) and Fe(iv) intermediates during reduction of Fe(vi) to Fe(iii): a nuclear forward scattering of synchrotron radiation approach. *Physical Chemistry Chemical Physics* 2015 09/14;17(34):21787-21790.
- (109) **Maddock JE**, McGurk M, Lee T. Attitudes of Policy Makers in Hawaii toward Public Health and Related Issues before and after an Economic Recession in the United States. *Frontiers in Public Health* 2015 May 26;3:146.
- (110) **Maddock JE**. Using a public health framework to address mental health. *PsycCRITIQUES* 2015;60(35).
- (111) Mao F, Han Y, Chen J, Chen W, Yuan M, **Hong Y**, Fang Y. Development of a Multidimensional Functional Health Scale for Older Adults in China. *Community Mental Health Journal* 2015 Nov 4.
- (112) McClellan DA, Ojinnaka CO*, Pope R, Simmons J, Fuller K, Richardson A, Helduser JW, Nash P, **Ory MG**, **Bolin JN**. Expanding Access to Colorectal Cancer Screening: Benchmarking Quality Indicators in a Primary Care Colonoscopy Program. *Journal of the American Board of Family Medicine* 2015 Nov-Dec;28(6):713-721.
- (113) **McMaughan D**, DeSalvo D, Creel L. *Maternal and Child Health in Rural United States: Updates and Challenges*. In: **Bolin J**, Bellamy G, **Ferdinand AO**, **Kash BA**, Helduser J, editors. *Rural Healthy People 2020: A Companion Document to Healthy People 2020*. Vol.1 College Station, TX.: Texas A&M University Health Science Center, Southwest Rural Health Research Center.; 2015. p. 119-125.
- (114) McNellis RJ, **Ory MG**, Lin JS, O'Connor EA. Standards of Evidence for Behavioral Counseling Recommendations. *American Journal of Preventive Medicine* 2015 Sep;49(3 Suppl 2):S150-7.
- (115) **Mehta R**, Shortz A*, **Benden M**. Standing Up for Learning: A Pilot Investigation on the Neurocognitive Benefits of Stand-Biased School Desks. *International Journal of Environmental Research and Public Health* 2015;13(1):59.
- (116) **Mehta RK**. Impacts of obesity and stress on neuromuscular fatigue development and associated heart rate variability. *International Journal of Obesity* 2015 Feb;39(2):208-213.
- (117) **Mehta RK**, Agnew MJ. Subjective evaluation of physical and mental workload interactions across different muscle groups. *Journal of Occupational and Environmental Hygiene* 2015;12(1):62-68.
- (118) **Mehta RK**, Cavuoto LA. The effects of obesity, age, and relative workload levels on handgrip endurance. *Applied Ergonomics* 2015 Jan;46 Pt A:91-95.
- (119) Menser TL, **Radcliff TA**, Schuller KA. Implementing a medical screening and referral program for rural emergency departments. *Journal of Rural Health* 2015 Spring;31(2):126-134.
- (120) **Millard AV**, Ladia MAJ. TB meets IE: contributions of ethnography. *Journal of Development Effectiveness* 2015;7(2):175-191.
- (121) Mingo CA, Smith ML, Ahn S, Jiang L, Cho J, **Towne SD, Jr**, **Ory MG**. Chronic Disease Self-Management Education (CDSME) Program Delivery and Attendance among Urban-Dwelling African Americans. *Frontiers in Public Health* 2015 Apr 27;2:174.
- (122) **Morrissey MA**, Blackburn J, Becker DJ, Sen B, Kilgore ML, Caldwell C, Menachemi N. Adverse Selection in the Children's Health Insurance Program. *Inquiry* 2015 Jul 5;52:10.1177/0046958015593559.
- (123) Morrison C, Cerdá M, **Goman DM**, Gruenewald PJ, Mair CF, Naimi TS, Scribner R, Stockwell T, Toomey TL, Wiczorek WF. Commentary on Gmel et al.(2015): Are alcohol outlet densities strongly associated with alcohol related outcomes? A critical review of recent evidence. *Drug and Alcohol Review* 2015.
- (124) **Ohsfeldt RL**, Li P, Schneider JE. In-office magnetic resonance imaging (MRI) equipment ownership and MRI volume among medicare patients in orthopedic practices. *Health Economics Review* 2015 Dec;5(1):31-015-0068-0. Epub 2015 Oct 20.
- (125) Ojinnaka CO*, Choi Y*, **Kum H**, **Bolin JN**. Predictors of Colorectal Cancer Screening: Does Rurality Play a Role? *The Journal of Rural Health* 2015;31(3):254-268.
- (126) Ojinnaka C*, **Bolin J**, Nash P, **Ory M**, McClellan D. *Cancer in Rural America*. In: **Bolin J**, Bellamy G, **Ferdinand A**, **Kash B**, Helduser J, editors. *Rural Healthy People 2020: A Companion Document to Healthy People 2020*. Vol.2 College Station, TX.: Texas A&M University Health Science Center, Southwest Rural Health Research Center.; 2015. p. 1-15.
- (127) Ojinnaka CO*, **Bolin JN**, McClellan DA, Helduser JW, Nash P, **Ory MG**. The role of health literacy and communication habits on previous colorectal cancer screening among low-income and uninsured patients. *Preventive Medicine Reports* 2015 Feb 24;2:158-163.
- (128) **Ory M**, **Towne SJ**, Stevens A, Park C, and Chodzko-Zajko W. *Chronic Disease Self-Management Education: Program Success and Future Directions*. In: Sullivan G, Pomidor A, editors. *Exercise in Aging Adults: A Guide for Practitioners*: Springer International; 2015. p. 139-150.
- (129) **Ory MG**, Altpeter M, Belza B, Helduser J, Zhang C*, Smith ML. Perceived Utility of the RE-AIM Framework for Health Promotion/ Disease Prevention Initiatives for Older Adults: A Case Study from the U.S. Evidence-Based Disease Prevention Initiative. *Frontiers in Public Health* 2015 Apr 27;2:143.
- (130) **Ory MG**, Sanner B, Vollmer Dahlke D*, Melvin CL. Promoting public health through state cancer control plans: a review of capacity and sustainability. *Frontiers in Public Health* 2015 Mar 18;3:40.
- (131) **Ory MG**, Smith ML, Howell D, Zollinger A*, Quinn C, Swierc SM, Stevens AB. The conversion of a practice-based lifestyle enhancement program into a formalized, testable program: From Texercise classic to Texercise select. *Frontiers in Public Health* 2015 Apr 27;2:291.
- (132) **Ory MG**, Smith ML, Jiang L, Howell D, Chen S*, Pulczinski JC*, Stevens AB. Texercise Effectiveness: Impacts on Physical Functioning and Quality of Life. *Journal of Aging and Physical Activity* 2015 Oct;23(4):622-629.
- (133) **Ory MG**, Smith ML, Jiang L, Lee R, Chen S*, Wilson AD, Stevens JA, Parker EM. Fall prevention in community settings: results from implementing stepping on in three States. *Frontiers in Public Health* 2015 Apr 27;2:232.
- (134) **Ory MG**, Smith ML, Parker EM, Jiang L, Chen S*, Wilson AD, Stevens JA, Ehrenreich H, Lee R. Fall prevention in community settings: results from implementing Tai Chi: Moving for better balance in three States. *Frontiers in Public Health* 2015 Apr 27;2:258.
- (135) **Ory MG**, Smith ML. Research, Practice, and Policy Perspectives on Evidence-Based Programing for Older Adults. *Frontiers in Public Health* 2015 04/21;3:136.
- (136) Pacheco M, Katz AR, Hayes D, **Maddock JE**. Physician Survey Assessing Pelvic Inflammatory Disease Knowledge and Attitudes to Identify Diagnosing and Reporting Barriers. *Womens Health Issues* Epub 2015 Sep 2.
- (137) Parasuraman R, **Mehta R**. *Neuroergonomic Methods for the Evaluation of Cognitive and Physical Work*. In: Wilson J, Sharples S, editors. *Evaluation of Human Work*. 4th ed. Boca Raton: CRC Press; 2015. p. 609-640.

Publications CY 2015

- (138) Park ES, Symanski E, **Han D**, Spiegelman C. Part 2. Development of Enhanced Statistical Methods for Assessing Health Effects Associated with an Unknown Number of Major Sources of Multiple Air Pollutants. *Research report (Health Effects Institute)* 2015 Jun;(183 Pt 1-2):(183 Pt 1-2):51-113.
- (139) Park S, Navratil S, Gregory A, Bauer A, Srinath I, Szonyi B, Nightingale K, Anciso J, Jun M, **Han D**, Lawhon S, Ivanek R. Multifactorial effects of ambient temperature, precipitation, farm management, and environmental factors determine the level of generic *Escherichia coli* contamination on preharvested spinach. *Applied and Environmental Microbiology* 2015 Apr;81(7):2635-2650.
- (140) Patterson MS, Amuta AO, **McKyer E**, McWhinney SL, Outley CW, Tison CA. The Physical Activity Environment among Rural, Low-Income Children. *Health Behavior and Policy Review* 2015;2(6):461-469.
- (141) Pena-Purcell NC, Jiang L, **Ory MG**, Hollingsworth R*. Translating an evidence-based diabetes education approach into rural african-american communities: the "wisdom, power, control" program. *Diabetes Spectrum* 2015 May;28(2):106-115.
- (142) Pannel CL, **McLeroy KR**, **Burdine JN**, Matarrita-Cascante D. Nonprofit hospitals' approach to community health needs assessment. *American Journal of Public Health* 2015 Mar;105(3):e103-13.
- (143) Pannel CL, **McLeroy KR**, **Burdine JN**, Matarrita-Cascante D, Wang J. A Mixed-Methods Approach to Understanding Community Participation in Community Health Needs Assessments. *Journal of Public Health Management and Practice* 2015 Nov 4.
- (144) Pannel CL, **McLeroy KR**, **Burdine JN**, Matarrita-Cascante D, Wang J. Community Health Needs Assessment: Potential for Population Health Improvement. *Population Health Management* 2015 Oct 6.
- (145) **Peres SC**, Kortum PT, Akladios M, Muddimer A. Developing and validating a self-report assessment tool for software biomechanics. *Journal of WORK* 2015 (Preprint):1-12.
- (146) **Peres SC**, Verona D, Ritchey P. The effects of various parameter combinations in parameter-mapping sonifications. *Proceedings of the 21st International Conference on Auditory Display (ICAD 2015)* 2015.
- (147) Pettine M, **McDonald TJ**, Sohn M, Anquandah GAK, Zboril R, **Sharma VK**. A critical review of selenium analysis in natural water samples. *Trends in Environmental Analytical Chemistry* 2015 12;5:1-7.
- (148) Phillips CD, Nwaiwu O, Lin S, Edwards R, Imanpour S, **Ohsefeldt R**. Concealed Handgun Licensing and Crime in Four States. *Journal of Criminology* 2015 06/16;2015:1-8.
- (149) Polettini J, Behnia F, **Taylor BD**, Saade GR, Taylor RN, Menon R. Telomere Fragment Induced Amnion Cell Senescence: A Contributor to Parturition? *PLoS One* 2015 Sep 23;10(9):e0137188.
- (150) Pomp S, Keller S, **Maddock JE**. Associations of depressive symptoms with health behaviors, stress, and self-assessed health status in Hawaii: a population study. *Asia-Pacific Journal of Public Health* 2015 Mar;27(2):NP1907-17.
- (151) Prizer LP, Smith ML, Housman J, **Ory MG**. Depressive symptomology management and falls among middle aged and older adults. *Aging & Mental Health* Epub 2015 Mar 20.
- (152) Pucek R, Tucek J-, Kolari-k J, Huskovej I, Filip J, Varma RS, **Sharma VK**, Zboril R. Ferrate (VI)-Prompted Removal of Metals in Aqueous Media: Mechanistic Delineation of Enhanced Efficiency via Metal Entrenchment in Magnetic Oxides. *Environmental Science & Technology* 2015 Feb 17;49(4):2319.
- (153) **Quiram B**, Ali N*, Babicz K*. *Rural Public Health Infrastructure*. In: **Bolin J**, Bellamy G, **Ferdinand A**, **Kash B**, Helduser J, editors. *Rural Healthy People 2020: A Companion Document to Healthy People 2020*. Vol.2College Station, TX.: Texas A&M University Health Science Center, Southwest Rural Health Research Center.; 2015. p. 67-75.
- (154) **Radcliff T**, **Kash BA**, **Ferdinand A**, and Schulze A. *Nutrition and weight status in rural areas*. In: **Bolin J**, Bellamy G, **Ferdinand AO**, **Kash BA**, Helduser J, editors. *Rural Healthy People 2020: A Companion Document to Healthy People 2020*. Vol.1College Station, TX.: Texas A&M University Health Science Center, Southwest Rural Health Research Center.; 2015. p. 33-42.
- (155) **Radcliff TA**, Lorden AL*, **Zhao H**. Clostridium difficile Infection in Texas Hospitals, 2007-2011. *Infection Control & Hospital Epidemiology* 2015 Dec 14:1-3.
- (156) Risendal BC, Dwyer A, Seidel RW, Lorig K, Coombs L, **Ory MG**. Meeting the challenge of cancer survivorship in public health: results from the evaluation of the chronic disease self-management program for cancer survivors. *Frontiers in Public Health* 2015 Apr 27;2:214.
- (157) Ritter PL, **Ory MG**, Smith ML, Jiang L, Alonis A, Laurent DD, Lorig K. Linking evidence-based program participant data with medicare data: the consenting process and correlates of retrospective participant consents. *Frontiers in Public Health* 2015 Apr 27;2:176.
- (158) Rivera JL, **Carrillo G**. A regional approach to health care reform: the Texas border. *Health Care Manager Journal* 2015 Jan-Mar;34(1):44-53.
- (159) Ro YS, Hwang S, Shin SD, **Han D**, Kang S, Song KJ, Cho S. Presumed Regional Incidence Rate of Out-of-Hospital Cardiac Arrest in Korea. *Journal of Korean Medical Science* 2015;30(10):1396-1404.
- (160) **Ross J**, Trueblood A*, Donnelly K, **Cizmas L**. Household pesticide use in *colonias* in Webb and Hidalgo Counties, South Texas, as assessed using a pesticide inventory. *Texas Public Health Association Journal* 2015;67(3):7-10.
- (161) Russell AN, Zheng X, O'Connell CM, **Taylor BD**, Wiesenfeld HC, Hillier SL, Zhong W, Darville T. Analysis of Factors Driving Incident and Ascending Infection and the Role of Serum Antibody in Chlamydia trachomatis Genital Tract Infection. *Journal of Infectious Diseases* Epub 2015 Sep 7.
- (162) Salvatore AL, Ahn S, Jiang L, Lorig K, **Ory MG**. National study of chronic disease self-management: 6-month and 12-month findings among cancer survivors and non-cancer survivors. *Psychooncology* 2015 Dec;24(12):1714-1722.
- (163) Schneider EC, Smith ML, **Ory MG**, Altpeter M, Beattie BL, Scheirer MA, Shubert TE. State Fall Prevention Coalitions as Systems Change Agents: An Emphasis on Policy. *Health Promotion Practice* 2015 Oct 23.
- (164) Schuetz P, Balk R, Briel M, Kutz A, Christ-Crain M, Stolz D, Bouadma L, Wolff M, Kristoffersen KB, Wei L, Burkhardt O, Welte T, Schroeder S, Nobre V, Tamm M, Bhatnagar N, Bucher HC, Luyt CE, Chastre J, Tubach F, et al. Economic evaluation of procalcitonin-guided antibiotic therapy in acute respiratory infections: a US health system perspective. *Clinical Chemistry and Laboratory Medicine* 2015 Mar;53(4):583-592.
- (165) Schuller KA, **Kash BA**, Gamm LD. Studer Group 's evidence-based leadership initiatives. *Journal of Health Organization and Management* 2015;29(6):684-700.
- (166) Schulze A, **Bolin J**, **Radcliff T**. *Rural Access to Quality Emergency Services*. In: **Bolin J**, Bellamy G, **Ferdinand A**, **Kash B**, Helduser J, editors. *Rural Healthy People 2020: A Companion Document to Healthy People 2020*. Vol.1College Station, TX.: Texas A&M University Health Science Center, Southwest Rural Health Research Center.; 2015. p. 25-33.
- (167) Shah MS, Kim E, Davidson LA, Knight JM, **Zoh RS**, Goldsby JS, Callaway ES, Zhou B, Ivanov I, Chapkin RS. Comparative effects of diet and carcinogen on microRNA expression in the stem cell niche of the mouse colonic crypt. *Biochimica et Biophysica Acta* Epub 2015 Oct 19.
- (168) Shah MS, Kim E, Davidson LA, Knight JM, **Zoh RS**, Goldsby JS, Callaway ES, Zhou B, Ivanov I, Chapkin RS. Data describing the effects of dietary bioactive agents on colonic stem cell microRNA and mRNA expression. *Data Brief*, 2015 Dec 19;6:398-404.
- (169) **Sharkey J**, Bustillos B, Umstattd Meyer M, and Legg T. *Health Promotion and Disease Prevention in the Older Adult*. In: Bernstein M, and Munoz N, editors. *Nutrition for the Older Adult* Burlington, MA: Jones & Bartlett Learning.; 2015. p. 115-150.
- (170) **Sharma VK**, Doong R. Editorial: ACS-C.P. Huang. *Separation and Purification Technology* 2015 12/17;156, Part 3:889-890.
- (171) **Sharma VK**, Filip J, Zboril R, Varma RS. Natural inorganic nanoparticles - formation, fate, and toxicity in the environment. *Chemical Society Reviews* 2015;44(23):8410-8423.

Publications CY 2015

- (172) **Sharma VK, McDonald TJ**, Kim H, Garg VK. Magnetic graphene-carbon nanotube iron nanocomposites as adsorbents and antibacterial agents for water purification. *Advances in Colloid and Interface Science*. 2015 11;225:229-240.
- (173) **Sharma V, McDonald T**, Sohn M, Anquandah G, Pettine M, Zboril R. Biogeochemistry of selenium. A review. *Environmental Chemistry Letters* 2015 03;13 (1):49-58.
- (174) Shortz AE, **Pickens A, Zheng Q, Mehta RK**. The effect of cognitive fatigue on prefrontal cortex correlates of neuromuscular fatigue in older women. *Journal of NeuroEngineering and Rehabilitation* 2015 Dec 21;12(1):115-015-0108-3.
- (175) Shubert TE, Smith ML, **Ory MG**, Clarke CB, Bomberger SA, Roberts E, Busby-Whitehead J. Translation of the otago exercise program for adoption and implementation in the United States. *Frontiers in Public Health* 2015 Apr 27;2:152.
- (176) Smith ML, **Colwell B**, Forté CA, Pulczinski JC, **McKyer ELJ**. Psychosocial correlates of smokeless tobacco use among Indiana adolescents. *Journal of Community Health* 2015;40(2):208-214.
- (177) Smith ML, Warne RT, Barry AE, Rossheim ME, Boyd MK, **McKyer J**. A Biopsychosocial Examination of ATOD Use among Middle and High School Students. *American Journal of Health Behavior* 2015;39(6):799-808.
- (178) Smith ML, Ahn S, Jiang L, Kulinski KP, **Ory MG**. Factors associated with Hispanic adults attending spanish-language disease self-management program workshops and workshop completion. *Frontiers in Public Health* 2015 Apr 27;2:155.
- (179) Smith ML, Beaudoin CE, Sosa ET, Pulczinski JC*, **Ory MG, McKyer EL**. Motivations, Barriers, and Behaviors Related to Obtaining and Discussing Family Health History: A Sex-Based Comparison Among Young Adults. *Frontiers in Public Health* 2015 Nov 20;3:249.
- (180) Smith ML, **Ory MG**, Ahn S, Belza B, Mingo CA, **Towne SD, Jr**, Altpeter M. Reaching diverse participants utilizing a diverse delivery infrastructure: A replication study. *Frontiers in Public Health* 2015 Apr 27;3:77.
- (181) Smith ML, **Ory MG**, Ahn S, Kulinski KP, Jiang L, Horel S, Lorig K. National dissemination of chronic disease self-management education programs: an incremental examination of delivery characteristics. *Frontiers in Public Health* 2015 Apr 27;2:227.
- (182) Smith ML, **Ory MG**, Jiang L, Howell D, Chen S*, Pulczinski JC*, Swierc SM*, Stevens AB. Texercise select effectiveness: an examination of physical activity and nutrition outcomes. *Translational Behavioral Medicine* 2015 Dec;5(4):433-442.
- (183) Smith ML, **Ory MG**, Jiang L, Lorig K, Kulinski KP, Ahn S. Workshop characteristics related to chronic disease self-management education program attendance. *Frontiers in Public Health* 2015 Apr 27;3:19.
- (184) Smith ML, **Pickens AW**, Ahn S, **Ory MG**, DeJoy DM, Young K, Bishop G, Congleton JJ. Typing performance and body discomfort among overweight and obese office workers: A pilot study of keyboard modification. *Applied Ergonomics* 2015 Jan;46 Pt A:30-37.
- (185) Smith ML, Stevens JA, Ehrenreich H, Wilson AD, Schuster RJ, Cherry CO, **Ory MG**. Healthcare providers' perceptions and self-reported fall prevention practices: findings from a large New York health system. *Frontiers in Public Health* 2015 Apr 27;3:17.
- (186) Smith ML, Wilson MG, DeJoy DM, Padilla H, Zuercher H, Corso P, Vandenberg R, Lorig K, **Ory MG**. Chronic disease self-management program in the workplace: opportunities for health improvement. *Frontiers in Public Health* 2015 Apr 27;2:179.
- (187) Sosa ET, **Mckyer EL**, Pruitt B, Goodson P, Castillo L. THE COMPLEXITIES OF CHILDHOOD OBESITY: A QUALITATIVE STUDY AMONG MEXICAN AMERICAN MOTHERS. *Journal of Health Disparities Research and Practice* 2015;8 (3):1.
- (188) Spears E*, **McKyer E**, Evans A, McIntosh W, **Ory M**, Whittlesey L, Kirk A, Hoelscher D, and Warren J. Using Family-Focused Garden, Nutrition, and Physical Activity Programs To Reduce Childhood Obesity: The Texas! Go! Eat! Grow! Pilot Study. *Childhood Obesity* 2015;11 (6):707-714.
- (189) St John JA, Shubert TE, Smith ML, Rosemond CA, Howell DA, Beaudoin CE, **Ory MG**. Developing an evidence-based fall prevention curriculum for community health workers. *Frontiers in Public Health* 2015 Apr 27;2:209.
- (190) Stevens AB, Thiel SB, Thorud JL, Smith ML, Howell D, Cargill J*, Swierc SM*, **Ory MG**. Increasing the Availability of Physical Activity Programs for Older Adults: Lessons Learned From Texercise Stakeholders. *Journal of Aging and Physical Activity* Epub 2015 May 18.
- (191) Sun X, Zhang Q, Liang H, Ying L, Xiangxu M, **Sharma VK**. Ferrate(VI) as a greener oxidant: Electrochemical generation and treatment of phenol. *Journal of Hazardous Materials* .
- (192) **Taylor BD**, Ness RB, Olsen J, Hougaard DM, Skogstrand K, Roberts JM, Haggerty CL. Serum leptin measured in early pregnancy is higher in women with preeclampsia compared with normotensive pregnant women. *Hypertension* 2015;65(3):594-599.
- (193) **Taylor BD**, Tang G, Ness RB, Olsen J, Hougaard DM, Skogstrand K, Roberts JM, Haggerty CL. Mid-pregnancy circulating immune biomarkers in women with preeclampsia and normotensive controls. *Pregnancy Hypertension* 2015.
- (194) Tolgyesi A, Tolgyesi L, Bekesi L, **Sharma VK**, Fekete J. Challenges and Advantages in Food Analysis Based on High Performance Liquid Chromatography Triple Quadrupole Tandem Mass Spectrometry. *Journal of Food Composition and Analysis* 2015;LXI:505-516.
- (195) **Towne S**, Lee C, Smith M, Pulczinski J, Swierc S, Coughlin R, et al. *Health-related Quality of Life & Well-Being*. In: **Bolin J**, Bellamy G, **Ferdinand A, Kash B**, Helduser J, editors. Rural Healthy People 2020: A Companion Document to Healthy People 2020. Vol.1 College Station, TX.: Texas A&M University Health Science Center, Southwest Rural Health Research Center.; 2015. p. 41-52.
- (196) **Towne S**, Smith M, Pulczinski J, Lee C, and **Ory M**. *Older adults*. In: **Bolin J**, Bellamy G, **Ferdinand A, Kash B**, Helduser J, editors. Rural Healthy People 2020: A Companion Document to Healthy People 2020. Vol.1 College Station, TX.: Texas A&M University Health Science Center, Southwest Rural Health Research Center.; 2015. p. 107-118.
- (197) **Towne SD, Jr**, Anderson KE, Smith ML, Dahlke DV, Kellstedt D, Purcell NP, **Ory MG**. Changing organizational culture: using the CEO cancer gold standard policy initiatives to promote health and wellness at a school of public health. *BMC Public Health* 2015 Sep 3;15:853-015-2186-3.
- (198) **Towne SD, Jr**, Lee S, Li Y, Smith ML. Assessment of eHealth capabilities and utilization in residential care settings. *Health Informatics Journal* 2015 Oct 28.
- (199) **Towne SD, Jr**, Probst JC, Mitchell J, Chen Z. Poorer Quality Outcomes of Medicare-Certified Home Health Care in Areas With High Levels of Native American/Alaska Native Residents. *Journal of Aging and Health* 2015 Dec;27(8):1339-1357.
- (200) **Towne SD, Jr**, Smith ML, Ahn S, Altpeter M, Belza B, Kulinski KP, **Ory MG**. National dissemination of multiple evidence-based disease prevention programs: reach to vulnerable older adults. *Frontiers in Public Health* 2015 Apr 27;2:156.
- (201) **Towne SD, Jr**, Smith ML, Ahn S, **Ory MG**. The reach of chronic-disease self-management education programs to rural populations. *Frontiers in Public Health* 2015 Apr 27;2:172.
- (202) **Towne SD, Jr**, Smith ML, Yoshikawa A, **Ory MG**. Geospatial distribution of fall-related hospitalization incidence in Texas. *Journal of Safety Research* 2015 Jun;53: 11-16.
- (203) Tu H, Liao X, Schuller K, Cook A, Fan S, Lan G, Lu Y, Yuan Z, Moore JB, **Maddock JE**. Insights from an observational assessment of park-based physical activity in Nanchang, China. *Preventive Medicine Reports* 2015;2:930-934.
- (204) Vollmer Dahlke D*, Fair K*, **Hong YA**, Beaudoin CE, Pulczinski J*, **Ory MG**. Apps seeking theories: results of a study on the use of health behavior change theories in cancer survivorship mobile apps. *JMIR Mhealth Uhealth* 2015 Mar 27;3(1):e31.

Publications CY 2015

- (205) Vuong AM, Shinde MU, **Brender JD, Shipp EM**, Huber JC, **Zheng Q, McDonald TJ, Sharkey JR**, Hoyt AT, Werler MM, Kelley KE, Langlois PH, Canfield MA. Nitrosatable Drug Exposure during Pregnancy and Preterm and Small-for-Gestational-Age Births. *Paediatric & Perinatal Epidemiology* 2015 01;29(1):60-71.
- (206) Wang K, Wu J, Wang R, Yang Y, Chen R, **Maddock JE**, Lu Y. Analysis of residents' willingness to pay to reduce air pollution to improve children's health in community and hospital settings in Shanghai, China. *Science of the Total Environment* 2015 Nov 15;533:283-289.
- (207) Wang ML, Goins KV, Anatchkova M, Brownson RC, Evenson K, **Maddock J**, Clausen KE, Lemon SC. Priorities of Municipal Policy Makers in Relation to Physical Activity and the Built Environment: A Latent Class Analysis. *Journal of Public Health Management and Practice* 9000;Publish Ahead of Print.
- (208) Wang R, Yang Y, Chen R, Kan H, Wu J, Wang K, **Maddock JE**, Lu Y. Knowledge, attitudes, and practices (KAP) of the relationship between air pollution and children's respiratory health in Shanghai, China. *International Journal of Environmental Research and Public Health* 2015 Feb 5;12(2):1834-1848.
- (209) Wendel ML, **McLeroy KR**. *Ecological Approaches. Oxford Bibliographies in Public Health*: Oxford University Press; 2015.
- (210) West C, Veronin M, Landry K, Kurz T, Watzak B, **Quiram B**, Graham L. Tools to investigate how interprofessional education activities link to competencies. *Medical Education Online* 2015 Jul 23;20:28627.
- (211) Winig BD, **Spengler JO**, Etow AM. Shared Use and Safe Routes to School: Managing the Fear of Liability. *The Journal of Law, Medicine & Ethics* 2015;43(s1):36-39.
- (212) Wood R*, Kellstedt D, Hochhalter A, Kress M, Ribardo J, Ramm C, Korpita S, Seidel C, Pena-Purcell N, Carvalho M, Escoffery C, and **Ory M**. Mini-Grant Demonstration Projects: A Community Approach to Increase Physical Activity. *Texas Public Health Association Journal* 2015;67(4):13-17.
- (213) **Xu X**, Chen X, Hu H, Dailey AB, **Taylor BD**. Current opinion on the role of testosterone in the development of prostate cancer: a dynamic model. *BMC Cancer* 2015 Oct 26;15:806-015-1833-5.
- (214) Yang X, Gan W, Zhang X, Huang H, **Sharma VK**. Effect of pH on the formation of disinfection byproducts in ferrate(VI) pre-oxidation and subsequent chlorination. *Separation and Purification Technology* 2015 12/17;156, Part 3:980-986.
- (215) Yang Y, Chen R, Xu J, Li Q, **Xu X**, Ha S, Song W, Tan J, Xu F, Kan H. The effects of ambient temperature on outpatient visits for varicella and herpes zoster in Shanghai, China: a time-series study. *Journal of the American Academy of Dermatology* 2015 Oct;73(4):660-665.
- (216) Yeager VA, **Ferdinand AO**, Beitsch LM, Menachemi N. Local Public Health Department Characteristics Associated With Likelihood to Participate in National Accreditation. *American Journal of Public Health* 2015 08/01; 2016/03;105 (8):1653-1659.
- (217) Yun H, Delzell E, Saag KG, Kilgore ML, **Morrissey MA**, Muntner P, Matthews R, Guo L, Wright N, Smith W, Colon-Emeric C, O'Connor CM, Lyles KW, Curtis JR. Fractures and mortality in relation to different osteoporosis treatments. *Clinical and Experimental Rheumatology* 2015 May-Jun;33(3):302-309.
- (218) Zajicek P, Kolar M, Pucek R, Ranc P, Varma R, **Sharma V**, Zboril R. Oxidative degradation of triazine- and sulfonamide-based herbicides using Fe(VI): The case study of atrazine and iodosulfuron with kinetics and degradation products. *Separation and Purification Technology* 2015 12/17;156, Part 3:1041-1046.
- (219) Zhang C, Li X, Su S, **Hong Y**, Zhou Y, Tang Z, Shen Z. Violence against Chinese female sex workers from their stable partners: a hierarchical multiple regression analysis. *Healthcare for Women International* 2015;36(7):797-815.
- (220) **Zheng Q**. Methods for comparing mutation rates using fluctuation assay data. *Mutation Research - Fundamental and Molecular Mechanisms of Mutagenesis* 2015;777:20-22.
- (221) **Zheng Q**. A new practical guide to the Luria-Delbruck protocol. *Mutation Research - Fundamental and Molecular Mechanisms of Mutagenesis* 2015;781:7-13.
- (222) **Zheng Q**. The Luria-Delbruck protocol is still the most practical. *Journal of Theoretical Biology* 2015 12/07;386:188-190.

Presentations CY 2015

- (1) Abiodun-Ojo O, **Taylor B**, Villagrana-Zesati R, Lopez-Hurtado M, de Haro-Cruz M and Guerra-Infante F. The frequency of *Mycoplasma genitalium* in a population of Mexican women. Society for Pediatric & Perinatal Epidemiologic Research Meeting, Denver CO. June 2015.
- (2) Alaniz A, **McLeroy KR** and and Garney WR*. What we leave behind: Factors influencing community institutionalization of public health projects. American Public Health Association Annual Meetings, Chicago, IL. October 31-November 4, 2015.
- (3) Baber O* and **Spengler J**. Monetary considerations in access to safe, affordable, nearby recreation facilities. Aspen Institute Roundtable, Washington, DC. October 6, 2015.
- (4) **Benden M**. Sedentary Behavior Research Trends. ORCHSE Western Occupational Safety & Health Group. September 1, 2015.
- (5) **Benden M**, **Zhao H** and Schneider D*. A 2-year evaluation of a high school standing desk intervention to reduce sedentary behavior in us children. International Society of Behavioral Nutrition and Physical Activity, Edinburgh, Scotland. June 2015.
- (6) **Bolin J**. Rural Healthy People 2020: Implications for the State of Oregon. State of Oregon Rural Health Association Annual Meeting. October 28 – 30, 2015.
- (7) Bornstein DB, Carnoske CC, Tabak R, **Maddock JE**, Hooker SP, Evenson KR and and Pate RR. Evaluation of the National Physical Activity Plan (NPAP): Understanding factors related to partner involvement in the coalition that developed the NPAP. National Physical Activity Plan Congress, Washington, DC. 2015.
- (8) Brody B, Choy L, Richards K, Williams M, Steinmetz L and and **Maddock JE**. Get Fit Kauai's Story. National Physical Activity Plan Congress, Washington, DC. 2015.
- (9) Bustillos B and and **Sharkey J**. "I try to keep that sugar down." Homebound older adults with Type 2 Diabetes Mellitus: Barriers to self-management. Experimental Biology 2015, Boston, MA. March 2015.
- (10) Choy L, Brody B, Richards K, Drisko J and and **Maddock JE**. Examining how a community coalition creates and implements policy changes to promote physical activity: the case of Get Fit Kauai. Active Living Research, San Diego. 2015.
- (11) Choy LB, Robericks B, Ryan J, Lee S, Darval-Chang D, Ikari Y and and **Maddock JE**. Multilevel analysis of student activity levels in Hawaii physical education classes. SHAPE American National Convention in Seattle, WA. 2015.
- (12) **Cizmas L.**. A Multi-Step Approach to Assessing the Toxicity of Drinking Water Disinfection By-Products following Chlorination, Chloramination or a Novel Ferrate Disinfection Process. International Chemical Congress of Pacific Basin Societies 2015, Honolulu, Hawaii. December 16, 2015.
- (13) **Cizmas L.**. Drinking Water Disinfection By-Products: Could Use of Ferrate Reduce Toxicity? Baylor University Environmental Science Seminar Series, Waco, TX. December 1, 2015.
- (14) Cooper J, Berke P, Meyer M, Peacock W, Quiring S, Van Zandt S, **Horney J** and Masterson J. Enabling Community Action: Resiliency Climate Change Cooperative Project. Association of Collegiate Schools of Planning Annual Conference. Houston, TX. October 22-25 2015.
- (15) Edwardson N, **Kash BA** and Janakiraman R. Measuring the impact of electronic health records on charge capture: a second generation EGR research approach. AcademyHealth, Annual Research Meeting, Minneapolis, MN. June 2015.
- (16) Egberts J*, Connaughton D and **Spengler J**. Spectators' perception on social media use to manage risks. SHAPE America national conference, Seattle, WA. March 2015.
- (17) Elkins AD*, **Gorman DM**, **Maddock JE**, **Kum HC** and and Lawley MA. Framing and value in social systems modeling. 59th Meeting of the International Society for the Systems Sciences in Berlin, Germany. 2015.
- (18) Forjuoh S, Lee C, Won J*, **Towne SJ**, Wang S and and **Ory M**. Correlates of Receiving a Recommendation for Physical Activity From a Primary Care Provider. 2015 North American Primary Care Research Group Annual Meeting. Cancun Mexico. October 24-28 2015.
- (19) **Garcia TP** and and Mueller S. High-dimensional Cox regression with exclusion frequency-based weights: application to a neuroimaging study of Huntington's disease. Joint Statistical Meeting, Seattle, WA. August 2015.
- (20) **Garcia TP**, Ma Y, Marder K and and Wang Y. Robust estimation for clustered failure time data: application to Huntington's disease. International Chinese Statistical Association Applied Symposium, Fort Collins, CO. June 2015.
- (21) **Garcia TP**, Ma Y, Marder K and and Wang Y. Robust estimation for clustered failure time data: application to Huntington's disease. ISNPS Meeting, Biosciences, Medicine, and Novel Non-Parametric Methods, Graz, Austria. July 2015.
- (22) Garney W*, **McLeroy K** and and Young A. Social Support Promoted through Physical Activity Networks. . American Public Health Association Annual Meetings, Chicago, IL. October 31-November 4, 2015.
- (23) Garney WR*, **McLeroy KR**, Patterson M and Burdine JN. Sustainability Assessed through a System's Perspective of Bridging and Bonding. . AAHB annual meeting, San Antonio, TX. March 15-18, 2015.
- (24) Garney WR* and and **McLeroy KR**. Physical Activity Changes in Exergames over Time. American Public Health Association Annual Meetings, Chicago, IL. October 31-November 4, 2015.
- (25) Garney WR*, **McLeroy KR** and and **Burdine JN**. An Access to Care Model Illustrating Individual and Community-Level Predictors between Urban and Rural Populations. . American Public Health Association Annual Meetings, Chicago, IL. October 31-November 4, 2015.
- (26) Garney WR*, **McLeroy KR**, Wendel ML and and Young AA. Mobilizing Community Capacity through Community Health Development: The Physical Activity and Community Engagement Project. AAHB Annual Meeting, San Antonio, TX. March 15-18, 2015.
- (27) Ghaffari A*, Wells R, Armstrong T, Creel L*, **Kum H-C**, Brossart D, Roper-Coleman S and Sunbury T. Applying relational coordination to inter-agency teamwork and patient experiences with providers. Organizational Theory in Health Care Conference, Richmond, VA. May 27-29, 2015.
- (28) Ha S, Hu H, Lu X and **Xu X**. Racial disparity on the association between pre-pregnancy BMI and pregnancy complications. 48th Annual Society for Epidemiologic Research Meeting, Denver CO. June, 2015.
- (29) Hoelscher D, **Ory M**, **Dowdy D**, Nichols D, Smith M, Menendez T and and Atteberry H. How Do We Communicate the Impact of Safe Routes to School to State Legislators? Lessons from the T-COPPE and 2013 Texas Health Perception Survey Projects. 143rd Annual Meeting of the American Public Health Association. Chicago, IL. November 2015.
- (30) Hoelscher D, **Dowdy D**, Lee C, Miao J*, Wang S, Nichols D, Atteberry H, Evans A, Menendez T and and **Ory M**. Effects of Funding Allocation for Safe Routes to School Programs on Active Commuting to School, Self-Reported Physical Activity, and Environmental Factors. 2015 Annual Conference of Active Living Research. San Diego, CA. February 2015.
- (31) **Hong Y** and Cho J. Seeking health information online among older adults from a national representative survey HINTS. 36th Annual Meeting & Scientific Sessions of the Society of Behavioral Medicine, San Antonio, TX. April 22-25, 2015.
- (32) **Hong Y**, Goldberg D, **Ory M**, Coughlin R, Kellstedt D, Hammond T and Forjuoh S. Efficacy of a Mobile-enabled Web Application (iCanFit) to Promote Physical Activity among Older Cancer Survivors: A Pilot Study. 2015 MD Anderson Cancer Survivorship Research Symposium, Houston, TX. February, 2015.
- (33) **Hong Y**, Goldberg D, **Ory M**, Coughlin R, Kellstedt D, Hammond T and Forjuoh S. A pilot study to develop and test a mobile-enabled web application (iCanFit) to promote physical activity among older cancer survivors. American Academy of Health Behavior 15th Annual Scientific Meeting, San Antonio, Texas. March 15-18, 2015.
- (34) **Hong Y** and Guo Y. Assessing acceptability and needs of mobile-based health intervention for people living with HIV/AIDS in China: Perspectives from health care providers and patients. AIDS Impact Conference in Amsterdam, Netherland. July 28 -31, 2015.
- (35) **Hong Y** and Yusuf A*. Cancer screening among people living with HIV/AIDS in Low and Middle Income Countries: A systematic literature review. July 28-31, 2015. AIDS Impact Conference in Amsterdam, Netherland.
- (36) **Horney J**. Healthy Community Indicator Tool. Department of Health and Human Services, Assistant Secretary for Preparedness and Response. October 20, 2015.

Presentations CY 2015

- (37) **Horney J.** Simulating a Public Health Emergency: A Case Study of the 2004 North Carolina State Fair E. Coli 0157 outbreak. Duke University Talent Identification Program. July 15, 2015.
- (38) **Horney J.** Measurement and Research in Recovery. U.S. Department of Health and Human Services Disaster Recovery Workshop, Washington, DC. March 5, 2015.
- (39) **Horney J,** Berke P, Wilson J, Dredge S and Luhrs M. Networks of plans and overlapping jurisdictions. Natural Hazards Center Annual Workshop, Broomfield, Colorado. July 2015.
- (40) **Horney J** and Rosenheim N. Using secondary data to quantify the health impacts of disasters in the Gulf. Gulf of Mexico Oil Spill and Ecosystem Science Conference. Houston TX. February 16-19, 2015.
- (41) Hu H and **Xu X.** Smoking, Serum Cotinine, and Exhaled Nitric Oxide in U.S. Asthmatic and Healthy Population: Results from the National Health and Nutrition Examination Survey 2007-2012. 48th Annual Society for Epidemiologic Research Meeting, Denver CO. June, 2015.
- (42) Hunley A, **Maddock JE** and and Smith D. Enhancing and promoting Hawaii's trails and public health. Hawaii Conservation Conference, Honolulu, HI. 2015.
- (43) **Kash BA.** Becoming Accountable: Achieving Success in Population Health Management. Medical World Americas Conference co-sponsored by ACHE, Houston, TX. April 2015.
- (44) **Kash BA,** Schnell K, Osborne JW and Zachary M. Sustainability of Healthcare Organizations: A Plan of Action. Texas Regional HIMSS Conference, Austin, TX. February 2015.
- (45) **Kash BA** and Tittle KO. How to Engage your Physicians in Growing a Healthy and Innovative Primary Care Network. Medical World Americas Conference co-sponsored by ACHE, Houston, TX. April 2015.
- (46) Kohl B, Elliot E and and **Maddock JE.** Physical activity planning at the state and local level – case studies from three states. National Physical Activity Plan Congress, Washington, DC. 2015.
- (47) **Kum H.** Social Genome: Putting Big Data to Work for Population Informatics. First International Workshop on Population Informatics for Big Data, Sydney, Australia. August 2015.
- (48) **Kum H.** Applying Data Science to Advance the Health and Welfare of Populations. Annual Conference on Society for Social Work and Research, New Orleans, LA. January 2015.
- (49) **Kum H.** Population Informatics and the Social Genome. Texas A&M Big Data Workshop, College Station, TX. February 2015.
- (50) **Kum H.** Research Data Infrastructure. Korea Institute of Science and Technology Information, Dae Jeon, Korea. August 2015.
- (51) **Kum H.** Social Genome: Putting Big Data to Work for Population Informatics. Computer Science and Engineering Seminar, Texas A&M University, Department of Computer Science, College Station, TX. February 2015
- (52) League P, Mackey S, Smith D, Smith M and **Towne SJ.** Innovative Partnerships and Programming to Prevent Falls and Associated Trauma among Older Adults. American Society on Aging Annual Conference. Chicago, IL, USA. March 23-27, 2015.
- (53) Lee C, Won J*, **Ory M,** Lee S, **Towne S,** Wang S and Forjuoh S. Public Health Implications of Neighborhood Safety. 55th Annual Conference of the Association of Collegiate Schools of Planning. Houston, TX. Oct 2015.
- (54) Li Y, **Towne SJ, Ory M** and Warren J. Program Effectiveness on Medical Cost Savings of TGEN Intervention Program. 2015 National Health Outreach Conference. Atlanta, GA, USA. May 6-8, 2015.
- (55) **Maddock JE,** Liao X, Schuller K, Hong T, Cook A, Fan S, Lan G, Yuan Z and Lu Y.. An observational assessment of park-based physical activity in Nanchang, China. Annual Meeting of the American Academy of Health Behavior, San Antonio, TX. 2015.
- (56) **Maddock JE,** Nihipali K and Yamauchi J. Assessing support for policies to reduce sugar sweetened beverages among likely voters in Hawaii. 143rd Annual Meeting for the American Public Health Association. 2015.
- (57) McClellan D, **Bolin J,** Ojinnaka C* and and Helduser J. Translating Research into Academic Medical Training & Practice: The Texas Cancer Screening, Training, Education & Prevention Program, "CSTEP.". CSTR Grant Rounds; Clinical Science & Translational Research Institute. Texas A&M Health Science Center, Bryan, TX. January 6, 2015.
- (58) McClellan D, Ojinnaka C*, Pope R, Simmons J, Fuller K, Richardson A, Helduser J, Nash P, **Ory M** and **Bolin J.** Expanding Access to Colorectal Cancer Screening Services: A Case for Primary Care Endoscopy. . Innovations in Cancer Research and Prevention Conference. Austin, TX. November 2015.
- (59) **Mehta R.** Wearable Ergonomics, Risk Assessment Tools & Technology. 18th Annual Applied Ergonomics Conference. Nashville, TN. March 16-19, 2015.
- (60) **Mehta R.** Does Stress Sabotage Your Ergonomics Program? . 18th Annual Applied Ergonomics Conference. Nashville, TN. March 16-19, 2015.
- (61) Mora E*, Mapar S* and **Mehta R.** Age-specific cortical control during quadriceps activation: a fNIRS investigation. Society for Neuroscience, Chicago, IL. October 17-21, 2015.
- (62) Ojinnaka C* and **Bolin J.** Late stage cervical cancer diagnosis: determinants and trends, 1990-2011. . American Public Health Association Annual Meeting and Exposition, Chicago, IL. November 2015.
- (63) Ojinnaka C* and **Bolin J.** Disparities in surgical treatment of breast cancer: the influence of socio-demographic and tumor characteristics. American Public Health Association Annual Meeting and Exposition, Chicago, IL. November 2015.
- (64) **Ory M.** Basic Principles for Behavior Change. National Public Health Week Obesity Prevention and Public Health Strategies. College Station, TX. April 2015.
- (65) **Ory M.** Evidence-Based Health Promotion: Implications for Medical Physics. Cook's Branch Conservancy SIBOR Workshop. Montgomery, TX. November 2015.
- (66) **Ory M.** Healthy Aging and Independent Living Initiative of the United Way of Tarrant County in Texas. Gerontological Society of America Annual Conference. Orlando, FL. November 2015.
- (67) **Ory M** and and Smith M. What the Research Tells Us. National Council on Aging CDSME and Falls Prevention National Resource Centers Meeting on Making Our Vision A Reality. Washington DC. April 2015.
- (68) **Ory M,** Schneider E, Smith M, Altpeter M, Bomberger S and and Shubert T. State Coalitions: A Critical Policy-level Behavior Change Intervention for Fall Prevention. Annual Meeting of the Society for Behavioral Medicine. San Antonio, TX. April 2015.
- (69) **Ory M,** Shubert T, Schneider E, Wilson A and and Smith M. The State-Driven Fall Prevention Program: Five Years of Progress. Gerontological Society of America Annual Conference. Orlando, FL. November 2015.
- (70) **Ory M,** Towne S, Won J*, Lee C and and Forjuoh S. Environmental Predictors of Walking among Older Adults. 143rd Annual Meeting of the American Public Health Association. Chicago, IL. November 2015.
- (71) Parker E, Lee R, Floyd F, Roma A, Talbut B, Moss H, **Ory M** and and Smith ML. Making Older Adult Fall Prevention Part of Routine Care in a Large Health System in New York State. Gerontological Society of America Annual Conference. Orlando, FL. November 2015.
- (72) **Perez-Patron, M.J. & Agree, E.M.** Family Formation and Temporary Migration to the United States as Life-course Transitions among Mexican Men and Women. Session presentation at the PAA Annual meeting in San Diego, CA. April 30-May 2, 2015.
- (73) **Perez-Patron MJ, Taylor B** and and DeGenna N. Depression and STI Comorbidity among Men and Women of Reproductive Age. Panel presentation at the Southern Demographic Association Annual Meeting in San Antonio, TX. October 14-16, 2015.
- (74) **Pickens A.** Current Research in Safety Leading Indicators. ISNConnect Global Safety Conference, Dallas, TX. April 8-10, 2015.
- (75) **Pickens A.** Indicators and Best Practices for Leading Indicators. Domtar Inc. National Safety Conference, Texarkana, TX. October 5-6, 2015.
- (76) **Pickens A.** 6-Month follow-up: Comparison of sit-to-stand and stand-biased desks in a call center. 18th annual Applied Ergonomics Conference, Nashville, TN. March 2015.
- (77) **Radcliff TA.** Measuring Readiness to Promote Resiliency: Operational Metrics and Standards. 6th Annual VEMEC Advancing and Redefining Communities Conference, San Diego, CA. December 3, 2015.

Presentations CY 2015

- (78) Sentell T, Lee T, **Maddock JE** and Fan V. Epidemiologic capacity and need in Hawaii: status and implication for improvement. Public Health Services and Systems Research Keenland Conference, Lexington, KY. 2015.
- (79) **Sharkey J**, Frank G and Manzo R. Latino Community Engagement and Obesity Prevention: The *Promotores* Model. 8th Biennial Childhood Obesity Conference, San Diego, CA. June 2015.
- (80) **Sharkey J**, **McDonald J**, Kunz S and Umstätt Meyer M. *Salud Para Usted y Su Familia* [Health for You and Your Family]: Childhood Obesity Prevention in Arizona, New Mexico, and Texas Border Areas. Society for Nutrition Education and Behavior's 48th Annual Conference, Pittsburg, PA. July 2015.
- (81) **Sharma VK**. Ferrate and Ferryl Species: Mossbauer Spectroscopy Investigations. Mediterranean Conference on the Applications of the Mossbauer Effect, Zadar, Croatia. 2015.
- (82) **Sharma VK**. Iron Based Sustainable Greener Technologies to Treat Cyanobacteria and Microcystin-LR in Water. International Workshop on Occurrence and Control of Taste, Odours, and Algal Toxins in Waters, Xiamen, China. 2015.
- (83) **Sharma VK**. Ferrates(VI, V, and IV): Oxidants/Disinfectants/Coagulants in Water Treatment Technologies. Harbin Institute of Technology, Shenzhen Graduate School, Shenzhen, China. 2015.
- (84) **Sharma VK**. Ferrates(VI, V, and IV): Multimodal Action in Sustainable Water Treatment Technologies. Kunming University of Science and Technology, Faculty of Environmental Science and Engineering, Kunming, China. 2015.
- (85) **Sharma VK**. Natural Particles in Environment. Yunan Agricultural University, Kunming, China. 2015.
- (86) **Sharma VK**. Ferrates: Green Oxidants with Multimodal Actions in Sustainable Treatment Technologies. Research Center of Environmental Eco-Friendly Sciences, Chinese Academy of Science, Beijing, China. 2015.
- (87) **Sharma VK**. Iron Oxides (Ferrates) as Green Materials for Sustainable Water Treatment. The 10th Asia Pacific Conference on Sustainable Energy & Environmental Technologies, Seoul, Korea. 2015.
- (88) **Sharma VK**. Water Supply Sustainability and Treatment Strategies: Challenges in Coming Decades. School of Public Health, Peking University, Beijing, China. 2015.
- (89) **Sharma VK**. High-Valent Iron Species (Ferrates) in Sustainable Water Treatment: Underlying Reaction Mechanisms. Institute of Chemistry, Chinese Academy of Science, Beijing, China. 2015.
- (90) **Sharma VK**. Formation and Fate of Natural Inorganic Nanoparticles: Underlying Mechanisms. College of Environmental Science and Engineering, Peking University, Beijing, China. 2015.
- (91) **Sharma VK**. Ferrate (Iron-Based Material): A Broad Portfolio of Applications. Lisbon, Faculty of Pharmacy, Lisbon, Portugal. 2015.
- (92) **Sharma VK**. Ferrates: Green Oxidants with Multimodal Actions in Treatment Technologies. Department of Civil and Environmental Engineering, Rice University, Texas. 2015.
- (93) **Sharma VK**. Ferrates (Iron-Based Material): A Broad Portfolio of Applications. Earth Day Texas 2015, Dallas, Texas. 2015.
- (94) **Sharma VK**. Emerging Issues- Climate Change and Water Pollution – Diseases. Bush China-US Conference, Houston, Texas. 2015.
- (95) **Sharma VK**. Ferrates and Ferryl Species: Mössbauer Spectroscopy Investigations. Mediterranean Conference on the Applications of the Mössbauer Effect, Zadar, Croatia. 2015.
- (96) **Sharma VK**. Ferrates (Iron-Based Material): A Broad Portfolio of Applications. Institute for Medicines and Pharmaceutical Sciences, Lisbon University, Lisbon, Portugal. 2015.
- (97) **Sharma VK**. High-Valent Iron Species: Greener Materials in Sustainable Treatment Technologies. Chemistry Department, Osaka University, Osaka, Japan. 2015.
- (98) **Sharma VK**. Novel Ferrate Technology in Treating Emerging Pollutants and Toxins in Water. Chemistry Department, Tokyo Metropolitan University, Tokyo, Japan. 2015.
- (99) **Sharma VK**. Water Structure and Ferrates as Green Material in Treating Water. Chemistry Department, Toho University, Chiba, Japan. 2015.
- (100) **Sharma VK**. Ferrates: Green Materials in Treating Water and Natural Silver Nanoparticles in the Environment. Department of Chemistry, Hohai University, Nanjing. 2015.
- (101) **Sharma VK**. Ferrate(VI)-Promoted Removal of Metals by Ferrate(VI): Mechanism Studies using Mössbauer Spectroscopy. The International Conference on the Applications of the Mössbauer Effect, Hamburg, Germany. 2015.
- (102) **Sharma VK**. Multimodal Actions of Ferrate Treatment Technology in Removing Metals, Pharmaceuticals, and Cyanotoxins in Water. International Symposium on Environmental Science and Technology, Chongqing, China. 2015.
- (103) Shen Y, Hu H and **Xu X**. Early Menarche and Gestational Diabetes Mellitus: Results from the NHANES 2007-2012. 48th Annual Society for Epidemiologic Research Meeting, Denver CO. June, 2015.
- (104) Simon M, Decosimo K, Wilfert R and **Horney J**. A mobile data collection app and project management tool for assessing health needs before or after disasters. NACCHO Public Health Preparedness Summit. Atlanta, GA. April 14, 2015 - April 17, 2015.
- (105) Smith M, Wilson K, Rosen B, Cowart C, White A, Jones S, Chiappone A, Reyes J, Hall K, Farmer J, Pulczynski J* and **Ory M**. HPV Vaccination Status and Mandate Support for School-Aged Students among Young Adult Females. Annual International Conference on the Health Risks of Youth. Santa Domingo, Dominican Republic. January 2015.
- (106) Smith M, Wilson M, DeJoy D, Padilla H, Zuercher H, Vandenberg R, Corso P, Lorig K, and **Ory M**. Translating the Chronic Disease Self-Management Program (CDSMP) for Use in the Workplace: Stakeholders and Processes. 143rd Annual Meeting of the American Public Health Association. Chicago, IL. November 2015.
- (107) Song S and **Pickens A**. hEAR Mobile Hearing Screening Application. 21st Annual International Conference on Mobile Computing and Network, Paris France. September 7-11, 2015.
- (108) **Spengler J**. Injury Prevention and Risk Management in Sport and Recreation Venues. Seoul National University Sports Leisure Safety International Forum, Seoul South Korea. October 2015.
- (109) **Spengler J**. Access to physical activity spaces. Aspen Institute Project Play Summit, Washington, DC. February 2015.
- (110) **Spengler J**. Physical literacy global environmental scan overview. Aspen Institute Physical Literacy Roundtable. Washington, DC. February 2015.
- (111) **Spengler J**. Panel Moderator. United Nations International Sport & Social Impact Summit, Sarasota, FL. June 2015.
- (112) **Spengler J**, Connaughton D, Nunn B and Frost N. Evaluating the Impact of Limited Liability Legislation on Community Recreational Use of School Sport and Recreation Facilities. Sport and Recreation Law Association National Conference, Charlotte, NC. March 2015.
- (113) **Taylor B**, Totten P, Astete S, Ferris M, Norori J, Ferrell R, Ness R, Martin D and Haggerty C. Genetic variation in Toll-like receptor 6 is associated with *Leptotrichia amnionii* infection in women with pelvic inflammatory disease. Society for Pediatric & Perinatal Epidemiologic Research Meeting, Denver CO. June 2015.
- (114) **Taylor B**, De Genna N, Patron M and Zhang P. The development of substance use and health disparities in herpes simplex virus type 2 (HSV-2). Society for Pediatric & Perinatal Epidemiologic 115 Meeting. June 2015.
- (115) **Towne SJ**, **Ory M**, Smith M and Smith D. Falls, Hospitalizations, and Programming in Texas. 2015 Aging in Texas Conference. Austin, TX. July 29-31.
- (116) **Towne SJ**, **Ory M**, Ahn S, et al. Geospatial Variations in the Cost of Fall-Related Hospitalizations in a Large Southern U.S. State. International Association of Gerontology and Geriatrics Asia/Oceania 2015 Congress. Chiang Mai, Thailand. October 19-22, 2015.
- (117) **Towne SJ**, Won J*, Lee S, **Ory M**, Forjuoh S, Wang S and Lee C.. Using Walk Score and Neighborhood Perceptions to Assess Walking among Older Adults. Gerontological Society of America Annual Conference. Orlando, Florida, USA. November 18-22, 2015.

Presentations CY 2015

(118) Umstatted Meyer M, Walsh S and and **Sharkey J**. Physical activity and sedentary behaviors of colonias children: The role of parents and siblings in the home environment. 12th Active Living Research Annual Conference: The Science of Policy Implementation, San Diego, CA. February 2015.

(119) Walsh S, Umstatted Meyer M and and **Sharkey J**. Oh, the Places They Can Play: A Descriptive Study of Four South Texas *Colonias* Communities. 15th Annual American Academy of Health Behavior Meeting, San Antonio, TX. March 2015.

(120) West C, Veronin M, Landry K, Kurz T, Watzak B, **Quiram B** and Graham L. Examining How Activities Align With Interprofessional Education (IPE) Competencies and Standards. Southern Group on Educational Affairs of AAMC, Charlotte, NC. April 24, 2015.

(121) Wilson K, White A, Rosen B, Chiappone A, Pulczinski J* and **Ory M**. Factors Associated with College Students' Intentions to Vaccinate their Daughters against HPV: Protecting the Next Generation. Annual Conference of the Society for Public Health Education. Portland, OR. April 2015.

(122) **Xu X**. Power Plant Emission and Adverse Pregnancy Outcomes. Florida Health of Department Bureau of Epidemiology. October Grand Round, Tallahassee, Florida. October 2015.

(123) **Xu X**. Environmental pollution and adverse pregnancy outcomes. University of Florida reproductive & perinatal biology seminar, Gainesville, Florida. February 4, 2015.

(124) Yeager V, **Ferdinand A** and Menachemi N. The Impact of IRS Policy on the Provision of Hospital Community Benefits. AcademyHealth Public Health Systems Research Interest Group Meeting, Minneapolis, MN. June 2015.

(125) Yoshikawa A*, **Towne S**, **Mehta R**, Smith M and **Ory M**. Change in Mobility and Associated Factors in a Falls Prevention Program for Community-dwelling Older Adults. 15th Annual Scientific Meeting of the American Academy of Health Behavior, San Antonio, TX. March 15-18.

(126) **Zhao H**. An improved survival estimator for medical costs with censored data using Kernel methods. ICSCA China Statistics Conference, 2015, Shanghai, China. July, 2015.

Faculty Research Interests by Department

Health Promotion and Community Health Sciences

Burdine, James. Professor. Measurement of Factors Influencing Community Capacity for Population Health Improvement; Community Health Development Strategies; Community Health Needs Assessment

Colwell, Brian. Professor. Adolescent Smoking Cessation; School Health Education; Youth Smoking Prevention; Adolescent Mental Health and Substance Abuse

Dowdy, Diane. Assistant Professor. Childhood Obesity Aimed at Prevention or Reduction; Physical Activity Programs to Community Settings; Physical Activity and Aging.

Hong, Y. Alicia. Associate Professor. HIV/AIDS and STI Prevention Intervention; Mental Health of Women and Children Affected by AIDS; Mobile Technologies to Behavioral Interventions

McKyer, Lisako. Associate Professor, Associate Dean for Climate and Diversity; Maternal Child Health Disparities; Health Equity and Social Justice; Child Health Promotion; Diversity and Cultural Competence

McLeroy, Kenneth. Regents Professor and Distinguished Professor. Community Capacity; Community-based Approaches to Health Promotion/Disease Prevention; Social Ecology and History of Public Health; Program Evaluation

Millard, Ann. Associate Professor. Border Health; Maternal Child Health; International Health; Occupational Health and Farm Workers; Primary Prevention of Type 2 Diabetes; Food Safety; Community-based Participatory Intervention Research

Ory, Marcia. Regents Professor and Distinguished Professor, Associate Dean for Research. Health and Wellness, Aging and Health Promotion, Healthy South Texas, Maternal and Child Health, Health Technology, Community Engagement, Translational Research

Sharkey, Joe. Professor. Food Access and Food Choice in Underserved Areas; Food Insecurity and Hunger; Childhood Obesity and Effects of Structural and Individual Characteristics on Nutrition, Physical Activity, and Health Outcomes; Promotora Empowerment; Community-engaged Approach to Population Health

Spengler, John. Department Head, Professor. Active Living Policy and Obesity Prevention; Legal and Policy Issues around Injury Prevention; Physical Activity and the Built Environment; Risk Management Policy and Implementation in Sport and Recreation

Tai-Seale, Tom. Associate Professor. Local Health Systems Development; Community Empowerment of Chronic Disease Prevention; Program Planning; Evaluation for the Prevention and Control of Chronic Disease; Health Behavior Coaching

Towne, Samuel. Assistant Professor. The Intersection of Health and Place; Health-related Disparities; Health Outcomes; Access to Health Services among Aging, Minority, and Rural Populations

Epidemiology & Biostatistics

Garcia, Tanya. Assistant Professor. Genetic Mixture Models; High-dimensional Inference; Measurement Error; Mixed Models; Neurodegenerative Diseases; Nonparametric Models; Semiparametric Models; Survival Analysis

Gorman, Dennis. Professor and Department Head. Alcohol and Drug Availability and Violence; Alcohol and Drug Prevention Policies; System Methodologies; Science and Pseudoscience in Public Health Research

Han, Daikwon. Associate Professor. Spatial Epidemiology, GIS & Spatial Analysis Methods, Environmental Health/Exposure Science, Environmental Justice & Health Disparities, Healthcare Access, Population Studies/Spatial Demography

Han, Gang. Associate Professor. Statistical Methods in the Development of Personalized Medicine; Design and Analysis of Phase I/II Clinical Trials and Translational Studies; Survival Analysis Methods in Cancer Research; HIV Viral Load Modeling; Bayesian analysis; Statistical Computing.

Horney, Jennifer. Associate Professor. Disaster Epidemiology Methods; Public Health Preparedness; Population-based Sampling; Public Health Systems and Services Research; Public Health Surveillance; Outbreak Investigation; Disaster Recovery; Community Resilience

Lillibridge, Scott. Professor. Biosecurity; Public Health Preparedness, Infectious Disease, Healthy South Texas

Maria Perez-Parton. Assistant Professor. Demographic Methods; Reproductive Health; Migration and Family Formation; Immigrant Health; Minority Aging

Shipp, Eva. Associate Professor. Injury Prevention; Occupational and Environmental Epidemiology; Farmworkers & Other Vulnerable Populations; Motor Vehicle Safety and Record Linkage; Electronic Health Records and Other Large Data Sets

Taylor, Brandie. Assistant Professor. Reproductive and Perinatal Epidemiology Methods; Identifying Genetic Markers and Biomarkers to Predict Risk of Reproductive/Pregnancy Complications; Prevention of Sexually Transmitted Infections

Tekwe, Carmen. Assistant Professor. Cancer Research; Nutritional Epidemiology; Radiation Epidemiology; Gerontology; Health Disparities; Bioinformatics; Proteomics; Measurement Error Models; Longitudinal Data Analysis; Survival Analysis; Applications of Generalized Linear Models; Neurostatistics; Functional Data Analysis; Mixed Effects Models

Xu, Xiaohui. Associate Professor. Air Pollution Epidemiological Studies. Maternal and Child Health. Environmental Exposure Assessment. Spatial Epidemiology

Zhao, Hongwei. Professor. Survival Analysis; Longitudinal Data Analysis; Quality-adjusted Life Time Estimation; Cost-effectiveness Analysis Conducted with Censored Data; Problems Arising from Correlated Data from Longitudinal Studies; Multilevel Epidemiological Studies

Zheng, Qi. Associate Professor. Mathematical Modeling of Biological Processes; Applied Stochastic Processes; Application of Computer Algebra

Zoh, Roger. Assistant Professor. Biostatistics; Bayesian Inference, Reliability Modeling and Factor Analysis; Analysis of Genomic Data; Engineering Statistics; Bioinformatics; Functional Longitudinal Data Analysis; Machine Learning; Statistical Monitoring; Nutrition and Cancer Epidemiology

Faculty Research Interests by Department

Health Policy & Management

Alexander, James. *Associate Professor.*

Development of Community and Health Networks; Small Rural Hospital Leadership; Effectiveness of Critical Access Hospitals; Nursing Shortages

Bolin, Jane. *Professor.* Health Law and Ethics;

Regulatory Compliance; Cancer Screening and Prevention; Diabetes Self-Management; Chronic Disease Management; Interdisciplinary and Translational Research; Rural Health Research; Rural Healthy People 2020

Cote, Murray. *Associate Professor.* Health Care

Operations; Patient Flow, Capacity Planning and Management; Demand Forecasting; Nurse Staffing and Scheduling

Ferdinand, Alva. *Assistant Professor.* Impact of

Laws and Other Policies Relative to Public Health Outcomes: Roadway Safety, Obesity, and Access to Care; State and Federal Regulation of Health Care and Community Health Development

Gregory, Sean. *Assistant Professor.* Integrated

Health Care Delivery System Performance; Impacts of Physician Integration; Decision Science Applications in Healthcare; Cost-effectiveness Research

Griffith, Jennifer. *Assistant Professor.* Program

Evaluation; Public Health Emergency Preparedness; Public Health Education Practices

Hatala, Jeffrey. *Assistant Professor/Director.* Public

Health Systems and Service Research; Rural Health, Health Policy, and Vulnerable Populations; Nutrition, Physical Activity, Obesity and Related Conditions; Educational Pedagogy, Particularly Around Writing Skills in Health Professions.

Kash, Bitu. *Associate Professor.* Organizational

Capacity for Change and Transformation; Change Implementation in Healthcare; Healthcare Strategic Planning and Marketing; Evaluation of Integrated Primary Care Networks; Quality and Cost of Care; Strategic Management in Nursing Homes.

Kum, Hye-Chung. *Associate Professor.* Data

Science for Health Care; Population Informatics; Health Informatics; Health Policy Research; Program Evaluation Using Big Data; Decision Support Systems for Health Policy and Management

McMaughan, Darcy. *Assistant Professor.* Elder

Abuse in Long-term Care in the United States; Pain Management among Texas Medicaid Recipients; Quality of Nursing Home Care in Texas; Fall Deaths among Older Adults; Relationship between Formal and Informal Care among Medicaid Home Health Care Recipients in Texas; Aging and Health Policy

Morrisey, Michael. *Professor and Department Head.*

Employer-sponsored Health Insurance; Affordable Care Act; Medicare & Medicaid; Effects of Legislation on Health and Health Care; Hospital Economics; Price Transparency in Health Care

Ohnsfeldt, Robert. *Professor.* Cost-Effectiveness and

Cost Models; Economics of Health Behavior; Impact of Health Sector Regulation

Quiram, Barbara. *Professor and Director.* Public

Health Infrastructure; Health System Service Quality; Public Health Workforce Development; Rural Community Health System Planning and Development; Rural Community Disaster Planning

Radcliff, Tiffany. *Professor.* Health Economics;

Health Policy; Health Services Research; Improving Quality of Care in Long-term Care; Access to Care for Rural and Other Underserved Populations; Improving Care Processes and Outcomes; Economic Evaluation

Sumaya, Ciro. *Professor.* Infectious diseases;

Tropical Medicine; Public Health Workforce

Cizmas, Leslie. *Assistant Professor.*

Environmental Health and Xenobiotic Exposures; Assessment of Pesticide Exposure in Children; Development of Effective Methods for Exposure Reduction; Community Health Education; Environmental Justice and Health Disparities; Global Health

Johnson, Natalie. *Assistant Professor.*

Environmental Carcinogens; Environmental Health Disparities; Exposure to Foodborne (aflatoxins) and Environmental Carcinogens (polycyclic aromatic hydrocarbons); Chemoprevention; Development of Biomarkers of Exposure to Traffic-related Air Pollution; Prenatal Exposure to Air Pollution and Associated Epigenetic Changes; Dietary Interventions to Prevent Environmentally-induced Asthma; Population-based Animal Models of Allergic airway Disease; K-12 Environmental Education; Undergraduate Research Mentoring; Environmental Sustainability; Healthy Gardens

Maddock, Jay. *Dean and Professor.* Social

Ecological Approaches to Increasing Physical Activity; Nutrition, Tobacco Use, and Global Health

McDonald, Thomas. *Professor.* Environmental

Chemistry; Petroleum Geochemistry; General Organic Chemistry

Mehta, Ranjana. *Assistant Professor.*

Neuroergonomics; Operator Stress and Fatigue; Obesity and the Aging Brain; Falls Prevention

Peres, S. Camille. *Assistant Professor.*

Biomechanics of Human Computer Interactions; Design Guidelines for Auditory Displays; Usability of Home Health Care Technology

Pickens, Adam. *Assistant Professor.* Ergonomic

Tool Development; Occupational Safety Screening/Tool Development; Upper Extremity Modeling; Manual Materials Handling; Occupational Biomechanics

Rene, Antonio. *Professor and Associate Dean for*

Academic Affairs. Occupational/Environmental; Chronic Disease Epidemiology, Research Training

Sharma, Virender. *Professor and Department Head.*

Iron-Based Oxidants (Ferrates and Ferrites); Kinetics and Mechanism of High-Valent Transition Metals; Advanced Oxidation Methods; Solar-Based Photoactive Materials in Water Treatments; Green Synthesis of Nanoparticles; Formation, Fate and Toxicity of Nanoparticles in Aquatic Environment

Environmental & Occupational Health

Benden, Mark. *Associate Professor.* Office Worker

Obesity, Classroom Ergonomics and Childhood Obesity; Medical Device Development and Testing; Rehabilitation Engineering

Bokelmann, AnnaMaria. *Assistant Professor.*

Environmental Health; Site Assessment; Regulatory Compliance, Health and Safety

Carillo, Genny. *Associate Professor.* Public Health

and US-Mexico Border Health Issues; Interactions of Human Health and the Environment; Asthma in School Children; Home Safety and Healthy Homes



The mission of the Office of Research is to provide efficient and effective administration and support for the research activities of the faculty and staff of the School of Public Health. The Office of Research will undertake this mission through relationships internal to the school and other entities within the Texas A&M University System as well as those external to the System.