



PUBLIC HEALTH
TEXAS A&M HEALTH SCIENCE CENTER

Annual Research Report

Calendar Year 2014

A photograph of the exterior of the Texas A&M Health Science Center building. The building is a modern, multi-story structure with a light-colored, textured facade. A prominent feature is a large glass entrance area with a white frame. Above the glass entrance, a white horizontal band contains the text 'TEXAS A&M HEALTH SCIENCE CENTER' in dark, bold, sans-serif capital letters. To the right of the main entrance, there is a large, curved glass window. The sky is clear and blue. The foreground is a paved area, possibly a plaza or parking lot.

TEXAS A&M HEALTH SCIENCE CENTER

Message from the Dean & Associate Dean for Research



Dean Jay Maddock, PhD

The mission of the Texas A&M University Health Science Center School of Public Health (SPH) is to improve the health of communities through education, service, outreach, and research. Research is an integral part of the School of Public Health with nearly 90% of the principal faculty involved in extramurally funded research. During the past year, the School of Public Health has experienced many exciting changes. In Fall 2014, Marcia G. Ory, Ph.D., MPH, Regents and Distinguished Professor, was appointed Associate Dean for Research replacing Dr. Jean Brender in this leadership role. Dr. Brender retired in January 2015 after serving five years as the Associate Dean for Research. The School of Public Health is grateful to Dr. Brender for her years of service as a respected researcher, faculty member, and Associate Dean for Research.

In early 2015, the School welcomed Dr. Jay Maddock as the Dean of the School of Public Health. Dr. Maddock previously served as the director of the University of Hawaii Public Health Program for eight years, held the rank of professor at the University of Hawaii and is internationally recognized for his research in social ecological approaches to increasing physical activity. He served as principal investigator on over \$28 million in extramural funding and is an author of over 90 scientific articles. He received his undergraduate degree in psychology and sociology, *magna cum laude*, from Syracuse University and both his master's degree and doctorate in experimental psychology from the University of Rhode Island.

This report is intended to present a brief synopsis of the research activities at The School of Public Health including a listing of our Board of Regents approved Centers, dedicated Research Programs, diverse research projects, peer reviewed publications, and faculty research interests. As highlighted in this report, our researchers are actively engaged in research and outreach activities. During 2014, SPH researchers published over 160 full articles in public health and related professional journals. As evidence of the commitment to training the next generation of researchers, many of the published articles were first authored or co-authored by School of Public Health graduate students actively engaged in research.

In 2014, the School was the recipient of many competitive new awards highlighting the diverse range of expertise and interests held by SPH researchers. These projects include the competitive renewal of the National Science Foundation funded Center for Health Organization Transformation (CHOT) — an Industry/University Collaborative Research Center, the Centers for Disease Control and Prevention supported Working on Wellness project-jointly funded with Texas A&M Agrilife, and the expansion of the Cancer Prevention & Research Institute of Texas (CPRIT) Enhanced Colorectal Cancer Screening Training and Prevention Education Program — a collaboration with the Texas A&M College of Medicine.

While the school's total research funding remained at a relative plateau in 2014, reflective of the challenging funding climate and retirement of a number of veteran researchers, there are many key initiatives and investments underway to support the expansion and growth of the school. Coupled with a dynamic leadership team and innovative investigators, SPH is poised for significant growth in the coming years.



*Marcia Ory, PhD, MPH
Associate Dean for Research*

Board of Regents Approved Centers

Center for Community Health Development

Established initially as a CDC funded
Prevention Research Center

Co-Directors: Kenneth McLeroy, PhD & Jim Burdine, DrPH



Southwest Rural Health Research Center

Established with funding initially from
The Federal Office of Rural Health Policy

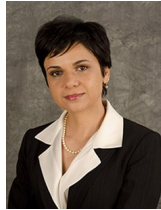
Director: Jane Bolin, PhD, JD, RN



Center for Health Organization Transformation

NSF Industry/University Cooperative Research Centers Program

Director, PI: Bitia Kash, PhD



USA Center for Rural Public Health Preparedness

CDC funded Center for Public Health Preparedness

Director, PI: Barbara Quiram, PhD



The Ergonomics Center

Funded by multiple external grants

Director, PI: Mark Benden, PhD



Research Programs

Program on Disability Research & Community-Based Care

Director: Darcy McMaughan, PhD



Program on Healthy Aging

Director: Marcia Ory, PhD, MPH



Program for Reproductive & Child Health

Director: Brandie Taylor, PhD



Program for Research & Outreach Engagement on Nutrition & Health Disparities Solutions

Director: Joseph Sharkey, PhD, MPH



Program on Public Health & Water Research

Director: Virender Sharma, PhD



Key Research Areas

- Asthma prevention & education
- Big data
- Border health
- Cancer prevention & control
- Community health assessment & organization
- Community health development
- Community-based participatory research
- Chronic pain and disabilities
- Chronic disease epidemiology
- Chronic disease self management
- Disaster preparedness and response
- Ergonomics
- Environmental exposure
- Environmental health
- Global health
- Health disparities research
- Health informatics
- Health organization transformation
- Health services research
- Health technologies
- Healthcare cost and quality
- Healthy aging
- Healthy South Texas
- Human computer interactions
- Infectious diseases
- Long-term care and aging policy
- Maternal & child health
- Nutrition
- Obesity prevention
- Occupational safety and health
- Prevention research
- Program evaluation
- Public health improvement
- Rural health
- Substance abuse
- Translational research
- Tobacco cessation and prevention
- Underserved and vulnerable populations
- Vaccine development
- Veterans health
- Water research
- Women's health

Selected Research Projects

- Prevention Research Center, Center for Community Health Development, CDC, PI: McLeroy
- Central Texas Cancer Prevention and Control Research Network, CDC, PI: Ory
- Center for Health Organization Transformation (CHOT), NSF I/UCRC, PI: Kash
- Center for Natural Disasters and Coastal Resilience, US Department of Homeland Security, PI: Horney
- Enhanced Colorectal Cancer Screening in a Family Medicine Residency Program Serving Low-Income & Underserved. The Texas Cancer Prevention & Research Institute of Texas (CPRIT), Co-PI: Bolin
- Brazos Partnership for Childhood Obesity (Dynamic Workstation, Stand-Biased Desk), R21, NIH/NICHHD, PI: Benden
- Collaborative Research on Oxidative Elimination of Cyanotoxins by Ferrates, NSF, PI: Sharma
- Development of a Stand-Biased School Desk to Reduce Childhood Obesity, CDC SBIR Phase II, PI: Benden
- Improved Definition and Prediction of Huntington's Disease Motor-onset Using Advanced Statistical Methods, Huntington's Disease Society of America, PI: Garcia
- Evaluation of Texas 1115 Medicaid Transformation Waiver, Texas Health and Human Services, PI: Ohsfeldt
- Development and Validation of Agent-Based Models for Alcohol-Related Violence, NIH/NIAAA, PI: Gorman
- Maternal and Child Health Public Health Training Program, HRSA, PI: Taylor
- Rural Lifestyle Eating and Activity Program (Rural LEAP), NIH/ sub to UF-Gainesville, PI: Radcliff
- Statewide Evaluation of Childhood Obesity Prevention Policies in Texas, Robert Wood Johnson Foundation, PI: Ory
- Salud Para Usted y Su Familia [Health for You and Your Family]: Family-Focused Childhood Obesity Prevention, USDA PI: Sharkey
- Texas A&M Occupational Safety and Health Training Program, NIOSH, PI: Benden
- (TECS-PERLC) Training and Education Collaborative System Preparedness & Response Learning Center, CDC, PI: Quiram
- STAR Kids, Texas Health and Human Services Commission (TXHHSC), PI: McMaughan
- Texas Youth Tobacco Education Project, Texas Department of State Health Services, PI: Colwell
- Software Biomechanics: Does the interaction design of software impact ergonomic risk factor, Office of Ergonomic Research, PI: Peres
- Texas Asthma Control Project, Texas Department of State Health Services, PI: Carrillo Zuniga
- Nursing Home Antibiotic Stewardship Tools and Guide, AHRQ, PI: McMaughan
- Revised Force-Endurance Models for the US Workforce, CDC, PI: Mehta
- Working on Wellness, CDC, PIs: Rice/Ory
- It Takes a Village—A Multi-Disciplinary, Multi-Level Evaluation of the State Driven Fall Prevention Project, CDC, PI: Ory

Active Grants & Contracts CY2014

Alaniz, Angie. *Austin County Health Assessment*, St. Joseph Health System, 2014, \$15,000 [CCHD].*

Alaniz, Angie (formerly **Wendel, Monica**). *Evaluation of the Madison Outreach and Services through Telehealth Network*, Madison County Government, \$112,599 (2012-2015) [CCHD].

Alaniz, Angie (formerly **Wendel, Monica**). *Using a Community Health Development Approach to Increase Access to Opportunities for Physical Activity (Prevention Research Center Core Research Project #2)*, CDC, \$309,717 (2011-2014) [CCHD].

Benden, Mark. *Small Business Innovation Research Award (SBIR) PHASE II: Development of a Stand-Biased School Desk to Reduce Childhood Obesity*, subaward from Positive Motion, LLC (prime is CDC), \$421,669 (2013-2015) [ERGC].

Benden, Mark. *Brazos Partnership for Childhood Obesity Research*, NIH-Eunice Kennedy Shriver Institute of Child Health & Human Development, \$402,875 (2012-2014) [ERGC].

Benden, Mark. *American Council of Governmental Industrial Hygienist Hand Activity Level (ACGIH TLF-HAL) Study*, ExxonMobil Upstream Research Company, \$25,000 (2013-2014) [ERGC].

Benden, Mark. *Texas A&M University Occupational Safety & Health Training Program (competitive 5 year renewal)*, NIOSH, \$516,453 (2012-2017) [ERGC].

Bolin, Jane, Co-PI (**McClellan, David**, PI). *Enhanced Colorectal Cancer Screening in a Family Medicine Residency Program Serving Low-Income & Underserved: Translating Research into Practice*, Cancer Prevention & Research Institute of Texas (CPRIT), \$2,748,008 (2011-2015) [SRHRC].

Bolin, Jane, Co-PI (**McClellan, David**, PI). *Enhanced Breast & Cervical Cancer Prevention for Low-Income and Underserved Using Trans-disciplinary Collaboration in a Family Medicine Setting*, Cancer Prevention & Research Institute of Texas (CPRIT), \$1,499,993 (2013-2016) [SRHRC].

Bolin, Jane, Co-PI (**McClellan, David**, PI). *Continuation and Expansion of Texas A&M's Colorectal Cancer Screening, Training, Education, and Prevention Program*, Cancer Prevention & Research Institute of Texas (CPRIT), \$1,500,000 (2014-2017) [SRHRC].*

Bolin, Jane. *Rural Healthy People 2020*, (Prevention Research Center funded subproject), CDC, \$85,724 (2011-2014) [CCHD] [SRHRC].

Brender, Jean. *Nitrates, Nitrites, and Nitrosatable Drugs and Risk of Selected Birth Defects*, NIH/NIEHS, \$1,400,117 (2007-2014).

Brender, Jean. *Mining Massive Geographically Referenced Environmental Health Data to Identify Risk Factors for Birth Defects*, subaward from Texas State University (prime is EPA), \$107,672 (2011-2014).

Carrillo Zuniga, Genny. *Texas Asthma Control Project*, Texas Department of State Health Services, \$346,103 (2009-2014).

Carrillo Zuniga, Genny. *Integrated Environmental Indoor Management using Healthy Homes and Asthma Education*, EPA, \$50,000 (2012-2014).

Carrillo Zuniga, Genny. *Planning Model for a Texas-Mexico Border Information Exchange Program*, Border Environment Cooperation Commission, \$17,600 (2014-2015).*

Colwell, Brian. *Youth Tobacco Education Project*, Texas Department of State Health Services (DSHS), \$601,405 (2003-2015).

Garcia, Tanya. *Improved Definition and Prediction of Huntington's Disease Motor-Onset Using Advanced Statistical Methods*, Huntington's Disease Society of America, \$150,000 (2013-2015).

Gorman, Dennis. *Development and Validation of Agent Based Models of Alcohol Related Violence*, NIH/NIAAA, \$377,999 (2011-2014).

Gregory, Sean. *Review of Texas Medicaid Acute Care Therapy Programs*, Texas Health and Human Services, Commission, (2014-2015), \$250,557 (2014-2015).*

Griffith, Jennifer (**Barbara Quiram**, Co-PI). *TXPHRAT Mitigation Planning*, Texas Department of State Health Services, \$298,581, (2014-2015).*

Hong, Y. Alicia. *Designing and Testing Mobile Application for Older Cancer Survivors to Use Community Resources*, Scott & White Health System, \$50,000 (2011-2015).

Horney, Jennifer. *Texas Census Research Data Center: Quantifying the Health Effects of Disasters on Vulnerable Populations*, Texas Census Research Data Center, \$4,000 ((2014-2015).*

Horney, Jennifer. *Pilot Test of Health Community Recovery Indicators*, subaward from University of North Carolina at Chapel Hill (prime is DHS Federal Emergency Management Agency FEMA), \$32,861 (2014-2015).*

Horney, Jennifer. *The Effects of Pre-Disaster Recovery Plan on Post-Disaster Recovery among Socially Vulnerable Populations*, National Science Foundation, \$83,085 (2014-2015).*

Horney, Jennifer. *Measuring Recovery through Healthy Community Indicators*, subaward from University of North Carolina (prime is Department of Homeland Security), \$34,736 (2014-2015).*

Jiang, Luohua. *Indian Health Services Division of Diabetes Treatment and Prevention (DDTYP) Demonstration Projects Coordinating Center*, renewal of subaward from University of Colorado Denver (prime is Indian Health Services), \$272,051 (2013-2014).

Jiang, Luohua. *Multi-level Analysis of the Translational Effects of Lifestyle Intervention among American Indian and Alaskan Natives*, American Diabetes Association, \$291,974 (2012-2014).

Johnson, Natalie. *Biomarkers of Prenatal Exposure to Particulate Air pollution in U.S. and Chinese Populations*, Texas A&M University National Natural Science Foundation of China (NSFC) Collaborative Research Grant Program, \$25,000 (2014-2015).*

Johnson, Natalie. *Strategic Research Development in Health and Transportation*, Texas A&M Transportation Institute, Texas A&M Health Science Center, and Johns Hopkins University, \$60,000 (2014-2015).*

Kash, Bitu. *Center for Health Organization Transformation (CHOT)*, National Science Foundation I/UCRC, \$460,999 (2008-2015) [CHOT].

Kash, Bitu. *Center for Health Organization Transformation (CHOT) Renewal*, National Science Foundation I/UCRC, \$379,125 (2014-2019) [CHOT].*

Kash, Bitu. *Innovative Managing Director*, National Science Foundation I/UCRC, \$576,815 (2014-2019) [CHOT].*

Kash, Bitu. *Center for Health Organization Transformation*, Various Memberships, \$1,312,500 (2009-2015) [CHOT].

Kash, Bitu. *Leveraging a Studer Group Intervention for Continuous Innovation*, Studer Group, \$150,000 (2012-2015) [CHOT].

Kash, Bitu. *Anatomy, Evolution, and the Future of the Perioperative Surgical Home (PSH): Development of a Framework for the PSH Design and Action*, American Society of Anesthesiologists, \$150,000 (2013-2016) [CHOT].

Kash, Bitu. *A Hospital Integrated Primary Care Provider (PCP) Network Model*, Texas Children's Hospital, \$150,000 (2013-2016) [CHOT].

Lillibridge, Scott. *Western Regional Center of Excellence for Biodefense and Emerging Infectious Diseases Administrative Core*, subaward from The University of Texas Medical Branch Galveston (prime is NIH), \$509,429 (2007-2014).

McDonald, Thomas. *External Safety Support*, Texas Transportation Institute, \$50,000, (2010-2015).

McDonald, Thomas. *Public Health Traineeship*, Health Resources and Services Administration (HRSA), \$148,359, (2014-2015)*

McLeroy, Kenneth. *Prevention Research Center (PRC). Center for Community Health Development 5 year renewal*, CDC, \$7.7M (2009-2015) [CCHD].

McLeroy, Kenneth (**Monica Wendel**, Co-PI). *Evaluation of minority youth tobacco education program*, subaward from The American Legacy Foundation (prime is U.S. Department of Health and Human Services), \$233,988 (2011-2014) [CCHD].

McLeroy, Kenneth. *Develop and Translate Medical Technology to Reduce Health Disparities*, (subaward from) The American Heart Association, (prime is CDC), \$452,381, (2014-2017) [CCHD].*

McMaughan, Darcy. *Nursing Home Antibiotic Stewardship Tools and Guide*, Task order from American Institutes for Research (prime is AHRQ), \$206,675 (2013-2016).

Active Grants & Contracts CY2014

McMaughan, Darcy. *Nursing Care Assessment Form Project*, Texas Health and Human Services Commission (TXHHSC), \$927,278 (2010-2015).

McMaughan, Darcy. *STAR KIDS*, Texas Health and Human Services Commission (TXHHSC), \$1,125,000 (2014-2016).*

Mehta, Ranjana. *Revised Force Endurance Models for the US Workforce*, subaward from Research Foundation of State University of New York (SUNY) [Prime is CDC-NIOSH], \$36,375 (2014-2016).*

Millard, Ann. *Loteria De Comadres Contra El Cancer*, subaward from Mercy Ministries of Laredo (prime is Cancer Prevention & Research Institute of Texas [CPRIT]), \$58,072, (2012-2015).

Millard, Ann. *Community Perceptions of the Environmental Issues Related to the Donna Reservoir: An Environmental Justice CBPR Pilot Study*, subaward from The International Valley Health Institute (primary is Institute for Integration of Medicine & Science through The University of Texas San Antonio), \$5,000 (2013-2014).

Nobles, Robert. *External Evaluation of the AFC-Personal Responsibility Education Program (PREP)*, Ambassadors for Christ, Inc., \$129,000 (2012-2015).

Ohsfeldt, Robert [Wells]. *Technology Directed Advanced Radiation Therapy of Lung Cancer*, subaward from the University of Texas Southwestern Medical Center (prime is Cancer Prevention & Research Institute of Texas CPRIT), \$232,440, (2011-2016).

Ohsfeldt, Robert [Wells]. *Evaluation of Texas 1115 Medicaid Transformation Waiver*, Texas Health and Human Services Commission (TxHHSC), \$2,400,000 (2013-2017).

Ohsfeldt, Robert [Wells]. *Integration of Primary Healthcare into Behavioral Healthcare*, Texas Health and Human Services Commission (TxHHSC), \$578,628 (2014-2017).*

Ory, Marcia G. *Texas Childhood Obesity Prevention Policy Evaluation (T-COPPE II): Statewide Evaluations of the Implementation of TX SRTS and WIC Health Food Policies*, The Robert Wood Johnson Foundation, \$150,000 (2013-2015).

Ory, Marcia G. *South, West & Central Consortium-Geriatric Education Center of Texas*, subaward from The University of Texas San Antonio (prime is HRSA), \$131,799, (2010-2015).

Ory, Marcia G. *The Central Texas Cancer Prevention and Control Research Network (CTxCPARN)*, CDC Special Interest Project, \$1,403,650 (2009-2015) [CCHD].

Ory, Marcia G. *Impact, Sustainability & Scalability of Multi-component Falls Prevention Programs*, CDC Special Interest Project \$1,174,608 (2011-2015) [CCHD].

Ory, Marcia G. *The Policies, Programs, and Partners for Falls Prevention (PPFP)*, CDC Special Interest Project, \$799,982 (2012-2015) [CCHD].

Ory, Marcia G. *It Takes a Village- A Multi-Level Evaluation of the State Driven Fall Prevention Project*, Special Interest Project (SIP), subaward from University of North Carolina (prime is CDC), \$204,744 (2014-2017).*

Ory, Marcia G. (Co-PI) and **Carol Rice** (PI). *Working on Wellness (WOW)*, Centers for Disease Control & Prevention, \$2.35M, (2014-2017).*

Ory, Marcia G. and **Hong, Alicia.** *Center for Healthy Active Living*, Texas A&M Engineering Seed Grant Program, \$50,000 (2014-2016). *

Ory, Marcia G. *Brazos Valley Area Agency on Aging Evidence Based Programs for Seniors*, Brazos Valley Council of Governments Area Agency on Aging, \$37,000 (2013-2018).

Peres, S. Camille. *Smart Procedures™ Usability Testing*, Applied Technical Resources (ATR, Inc), \$142,300 (2014-2016).*

Peres, S. Camille. *Understanding Workload for Remote Physiological Monitoring Workers: Maximizing Worker Efficiency and Maintaining Patient Safety*, Mayo Clinic, \$5,000 (2014-2016).*

Peres, S. Camille. *Software Biomechanics: Does the Interaction Design of Software Impact Ergonomic Risk Factors*, Office of Ergonomic Research, \$26,500, (2013-2014).

Peres, S. Camille. *Advanced Procedures Research Study Phase I*, TEES/Chevron Technology Ventures, \$20,856 (2014-2015).*

Quiram, Barbara. *Training & Education Collaborative System - Preparedness and Emergency Response Learning Center (TECS PERLC)*, CDC, \$2.47M (2010-2015) [USA].

Quiram, Barbara. *Texas Public Health Training Center*, 5 year renewal, The University of Texas Health Science Center School of Public Health, subaward from UTHSC Houston (prime is HRSA), \$641,700 (2010-2015).

Quiram, Barbara. *Mitigation Planning Process—Strategic Plan and Overview for LHD Counties (Priority 1)*, Texas Department of State Health Services, \$94,011 (2014-2015).*

Radcliff, Tiffany and **Côté, Murray.** *Rerouting Non-Emergency Patients from the Emergency Department (ED) to a Rural Health Clinic (RHC) within East Texas Medical Center Regional Health System (ETMC)*, ETMC, \$150,000, (2012-2014) [CHOT].

Radcliff, Tiffany. *Rural Lifestyle Eating and Activity Program (Rural LEAP)*, subaward from the University of Florida, (prime is NIH) \$73,253, (2013-2018).

Radcliff, Tiffany. *VEMEC IPA: VA Emergency Management and Evaluation Center Interagency Personnel Agreement*, U.S. Department of Veteran's Affairs, \$133,805 (2011-2015).

Radcliff, Tiffany. *Reducing the Impact of C. difficile for the Texas Medicaid Program*, Texas Department of State Health Services, \$5,000 (2014).*

Rene, Antonio. *Renewal University Affiliation for Principles of Military Preventative Medicine Program of Instruction*, DOD-Army-U.S. Medcom-center for Health Care Contracting, \$693,393 (2013-2018).

Sharkey, Joseph R. *Texas Healthy Aging Research Network (TxHAN)*, CDC Special Interest Project, \$380,000, (2009-2014) [CCHD].

Sharkey, Joseph R. *Texas Nutrition and Obesity Policy Research and Evaluation Network (TxNOPREN)*, CDC Special Interest Project Renewal, \$139,594 (2012-2014) [CCHD].

Sharkey, Joseph R. *Prevention Research Center (Center PI: McLeroy) Core Research Project-Working with Rural and Underserved Communities to Promote a Healthy Food Environment: Mixed Methods Approach*, CDC, \$1,411,257 (2009-2014) [CCHD].

Sharkey, Joseph R. *Understanding Very Low Food Security among Children of Mexican Origin: The Circumstances of Mexican Origin Families in Texas*, University of Kentucky Center for Poverty Research (prime is USDA), \$100,000 (2012-2014).

Sharkey, Joseph R. *REACH: Building Healthier Progreso Colonias*, Hidalgo Medical Services, \$232,155 (2013-2014).

Sharkey, Joseph R. *Physical Activity of Mexican-Origin Mothers and Children in Forgotten Border Colonias: A Community-Based Participatory Approach to Understanding the Landscape*, Baylor University, \$15,650 (2013-2014).

Sharma, Virender. *Collaboration Research on Oxidative Elimination of Cyanotoxins by Ferrates (VI, VI, and IV)*, National Science Foundation, \$148,920 (2014-2015).*

Shipp, Eva. *Assessing the Feasibility of Creating an Integrated Crash and Injury Data System for Texas*, Texas Transportation Institute, \$50,000 (2014)*

Shipp, Eva. *Neuromotor Function and Work Injury Risk among Hispanic Adolescent Farmworkers (a.k.a. The HIP Project)*, The Southwest Center for Agricultural Health Injury Prevention and Education at The University of Texas Health Center at Tyler (prime is NIOSH/CDC), \$724,345 (2011-2016).

Taylor, Brandie. *Host Genetic Susceptibility to Chlamydia-Associated Reproductive Morbidity*, American Sexually Transmitted Diseases Association (ASTDA), \$100,000 (2014-2016).*

Taylor, Brandie. *Identification of Mycoplasma Genitalium and Its Correlates in Mexican Women*, Texas A&M and Consejo Nacional del Ciencia y Tecnologia (CONACYT) Collaborative Research Grant Program, \$24,000 (2014-2015).*

Active Grants & Contracts CY2014

Wells, Rebecca *Treatment Access for Families: An Application of QCA and Regression Techniques*, subaward from UCLA (prime is NIH/NIDA), \$21,868 (2013-2014).

Wendel, Monica and Clark, Heather. *Evaluation of the Shellbrook Intervention*, Aids Foundation of Houston, \$120,178 (2011-2014) [CCHD].

Wendel, Monica. *2013 Central Texas HIV Client Needs Assessment*, Brazos Valley Council of Governments (BVCOG), \$35,000 (2011-2014) [CCHD].

Projects Key:

* Denotes newly awarded in CY2014.

[] Denotes Center affiliated projects

[CCHD] = Center for Community Health Development

[CHOT] = Center for Health Organization Transformation

[ERGC] = The Ergonomics Center

[SRHRC] = Southwest Rural Health Research Center

[USA] = USA Center for Rural Public Health Preparedness

Publications CY 2014

- 1) Adegboyega NF, **Sharma VK**, Siskova KM, Vecerova R, Kolar M, Zboril R, Gardea-Torresdey JL. Enhanced formation of silver nanoparticles in Ag+-NOM-iron(II, III) systems and antibacterial activity studies. *Environmental Science & Technology* 2014 Mar 18;48(6):3228-3235.
- 2) Adepoju OE*, **Bolin JN**, Booth EA, **Zhao H**, Lin SH*, **Phillips CD**, **Ohsfeldt RL**. Is diabetes color-blind? Growth of prevalence of diagnosed diabetes in children through 2030. *Population Health Management* Epub 2014 Oct 7.
- 3) Adepoju OE*, **Bolin JN**, **Phillips CD**, **Zhao H**, **Ohsfeldt RL**, **McMaughan DK**, Helduser JW, Forjuoh SN. Effects of diabetes self-management programs on time-to-hospitalization among patients with type 2 diabetes: a survival analysis model. *Patient Education and Counseling* 2014 Apr;95(1):111-117.
- 4) Adepoju OE*, Zhang Y*, **Phillips CD**. Modeling the determinants of Medicaid home care payments for children with special health care needs: A structural equation model approach. *Disability and Health Journal* 2014 Oct;7(4):426-432.
- 5) Ahn S, **Jiang L**, Smith ML, **Ory MG**. Improvements in sleep problems among the chronic disease self-management program participants. *Family Community Health* 2014 Oct-Dec;37(4):327-335.
- 6) Ahn S, Kim KY, **Ory MG**, Na YJ, Kim KS. The applicability of the United States' chronic disease self-management program (CDSMP) to Korean adults. *Korean Journal Health Education and Promotion* 2014;31(4):63-72.
- 7) Ahn S, Smith M, Hendricks M, **Ory M**. Associations of food insecurity with body mass index among baby boomers and older adults. *Food Security* 2014 06/01;6(3):423-433.
- 8) Al-Abduly A, **Sharma VK**. Oxidation of benzothiophene, dibenzothiophene, and methyl-dibenzothiophene by ferrate(VI). *Journal of Hazardous Materials* 2014 Aug 30;279:296-301.
- 9) Alfano-Sobsey E, Ledford SL, Decosimo K, **Horney JA**. Community health needs assessment in Wake County, North Carolina: partnership of public health, hospitals, academia, and other stakeholders. *North Carolina Medical Journal* 2014 Nov-Dec;75(6):376-383.
- 10) **Appiah B***, Gastel B, **Burdine JN**, Russell LH. Science reporting in Accra, Ghana: Sources, barriers and motivational factors. *Public Understanding of Science* Epub 2014 Sep 5.
- 11) Assaad H, Yao K, **Tekwe CD**, Feng S, Bazer FW, Zhou L, Carroll RJ, Meininger CJ, Wu G. Analysis of energy expenditure in diet-induced obese rats. *Frontiers in Bioscience (Landmark Ed)* 2014 Jun 1;19:967-985.
- 12) Bang H, **Zhao H**. Cost-effectiveness analysis: a proposal of new reporting standards in statistical analysis. *Journal of Biopharmaceutical Statistics* 2014;24(2):443-460.
- 13) Becker DJ, Arora T, Kilgore ML, Curtis JR, Delzell E, Saag KG, Yun H, **Morrissey MA**. Trends in the utilization and outcomes of Medicare patients hospitalized for hip fracture, 2000-2008. *Journal of Aging and Health* 2014 Apr;26(3):360-379.
- 14) **Benden ME**, **Zhao H**, Jeffrey CE, **Wendel ML**, Blake JJ. The evaluation of the impact of a stand-biased desk on energy expenditure and physical activity for elementary school students. *International Journal of Environmental Research and Public Health* 2014 Sep 10;11(9):9361-9375.
- 15) Berke P, Cooper J, Aminto M*, Grabich S*, **Horney JA**. Adaptive planning for disaster recovery and resiliency: An evaluation of 87 local recovery plans in eight states. *Journal of the American Planning Association* 80(4):310-323.
- 16) Bevc CA, Simon MC, Montoya TA, **Horney JA**. Institutional facilitators and barriers to local public health preparedness planning for vulnerable and at-risk populations. *Public Health Reports* 2014;129 Suppl 4:35-41.
- 17) **Brender JD**, Shinde MU*, Zhan FB, Gong X, Langlois PH. Maternal residential proximity to chlorinated solvent emissions and birth defects in offspring: A case-control study. *Environmental Health* 2014 Nov 19;13:96-069X-13-96.
- 18) Bungler AC, Collins-Camargo C, McBeath B, Chuang E, Perez-Jolles M, **Wells R**. Collaboration, competition, and cooptation: Interorganizational dynamics between private child welfare agencies and child serving sectors. *Children and Youth Services Review* 2014 Mar 1;38:113-122.
- 19) Chuang E, Collins-Camargo C, McBeath B, **Wells R**, Bungler A. An empirical typology of private child and family serving agencies. *Children and Youth Services Review* 2014 Mar 1;38:101-112.
- 20) Chuang E, **Wells R**, Aarons GA. Identifying depression in a national sample of caregivers investigated in regard to their child's welfare. *Psychiatric Services* Epub 2014 Apr 1.
- 21) Clark HR*, Ramirez A, Drake KN, Beaudoin CE, Garney WR, **Wendel ML**, Outley C, **Burdine JN**, Player HD. Utilization of an interorganizational network analysis to evaluate the development of community capacity among a community-academic partnership. *Progress in Community Health Partnerships* 2014 Spring;8(1):41-51.
- 22) Conley AM, Vagi S, **Horney JA**. Use of the community assessment for public health emergency response to conduct community health assessments for public health accreditation. *Journal of Public Health Management and Practice* 2014 Sep-Oct;20(5):490-497.
- 23) Cooper SP, Heyer N, **Shipp EM**, Ryder ER, Hendrikson E, Socias CM, Del Junco DJ, Valerio M, Partida S. Community based research network: opportunities for coordination of care, public health surveillance, and farmworker research. *Online Journal of Public Health Informatics* 2014 Oct 16;6(2):e190.
- 24) **Dean WR.**, **Sharkey JR.**, Nalty CC., Xu J. Government capital, intimate and community Social capital, and food security status in older adults with different income levels. *Rural Sociology* Epub 2014.
- 25) Diagne M, **Sharma V**, Oturan N, Oturan M. Depollution of indigo dye by anodic oxidation and electro-Fenton using B-doped diamond anode. *Environmental Chemistry Letters* 2014 03/01;12(1):219-224.
- 26) Dickerson JB*, McNeal CJ, Tsai G, Rivera CM, Smith ML, **Ohsfeldt RL**, **Ory MG**. Can an Internet-based health risk assessment highlight problems of heart disease risk factor awareness? A cross-sectional analysis. *Journal of Medical Internet Research* 2014 Apr 18;16(4):e106.
- 27) Donovan CV, Markiewicz M, **Horney JA**. Changes in public health preparedness services provided to local health departments by regional offices in North Carolina: A comparison of two cross-sectional studies. *BMC Research Notes* 2014 May 28;7:319-0500-7-319.
- 28) Dwyer C, **Horney J**. Qualitative research validating indicators of disaster recovery. *PLoS Currents Disasters* 2014 Dec 16(1).
- 29) Elkins AD*, **Goman DM**. *Systems Theory in Public Health*. Published online Jan. 2014. DOI: <http://dx.doi.org/10.1093/obo/9780199756797-0072>.
- 30) Elliott TR, Patnaik A, Naiser E, Fournier CJ, **McMaughan DK**, Dyer JA, **Phillips CD**. Medicaid personal care services for children with intellectual disabilities: what assistance is provided? When is assistance provided? *Journal of Intellectual and Developmental Disability* 2014 Feb;52(1):24-31.
- 31) Escoffery C, Rodgers KC, Kegler MC, Haardorfer R, Howard DH, Liang S, Pinsker E, Roland KB, Allen JD, **Ory MG**, Bastani R, Fernandez ME, Risendal BC, Byrd TL, Coronado GD. A systematic review of special events to promote breast, cervical and colorectal cancer screening in the United States. *BMC Public Health* 2014 Mar 24;14:274-2458-14-274.
- 32) **Ferdinand AO**, Menachemi N. Associations between driving performance and engaging in secondary tasks: A systematic review. *American Journal of Public Health* 2014 Mar;104(3):e39-48.
- 33) **Ferdinand AO**, Menachemi N, Sen B, Blackburn JL, **Morrissey M**, Nelson L. Impact of texting laws on motor vehicular fatalities in the United States. *American Journal of Public Health* 2014 Aug;104(8):1370-1377.

Publications CY 2014

- 34) Fernandez ME, Melvin CL, Leeman J, Ribisl KM, Allen JD, Kegler MC, Bastani R, **Ory MG**, Risendal BC, Hannon PA, Kreuter MW, Hebert JR. The cancer prevention and control research network: An interactive systems approach to advancing cancer control implementation research and practice. *Cancer Epidemiology, Biomarkers & Prevention* 2014 Nov;23(11):2512-2521.
- 35) Forjuoh SN, **Bolin JN**, Huber JC, Jr, Vuong AM*, Adepoju OE*, Helduser JW, Begaye DS, Robertson A, **Moudouni DM**, Bonner TJ, **McLeroy KR**, **Ory MG**. Behavioral and technological interventions targeting glycemic control in a racially/ethnically diverse population: A randomized controlled trial. *BMC Public Health* 2014 Jan 23;14:71-2458-14-71.
- 36) Forjuoh SN, **Bolin JN**, Vuong AM*, Helduser JW, **McMaughan DK**, **Ory MG**. Primary care physicians' perceptions of diabetes treatment protocols. *Texas Medicine* 2014 Jan 1;110(1):e1.
- 37) Forjuoh SN, **Ory MG**, **Jiang L**, Vuong AM*, **Bolin JN**. Impact of chronic disease self-management programs on type 2 diabetes management in primary care. *World Journal of Diabetes* 2014 Jun 15;5(3):407-414.
- 38) Forjuoh SN, **Ory MG**, Wang S, des Bordes JK, **Hong Y**. Using the iPod Touch for patient health behavior assessment and health promotion in primary care. *JMIR mHealth and uHealth* 2014 Mar 21;2(1):e14.
- 39) Freedman DA, Pena-Purcell N, Friedman DB, **Ory M**, Flocke S, Barni MT, Hebert JR. Extending cancer prevention to improve fruit and vegetable consumption. *Journal of Cancer Education* 2014 Dec;29(4):790-795.
- 40) Gandhi R, Ray AK, **Sharma VK**, Nakhla G. Treatment of combined sewer overflows using ferrate (VI). *Water Environment Research* 2014 Nov;86(11):2202-2211.
- 41) **Garcia TP**, Muller S. Influence of measures of significance-based weights in the weighted Lasso. *Journal of the Indian Society of Agricultural Statistics* 2014 2014;68(2):131-144.
- 42) Gennari F, **Sharma VK**, Pettine M, Campanella L, Millero FJ. Reduction of selenite by cysteine in ionic media. *Geochimica et Cosmochimica Acta* 2014 /11/1;124(0):98-108.
- 43) Gifford EJ, **Wells RS**, Bai Y, Malone PS. Is implementation fidelity associated with improved access to care in a School-based child and family team model? *Evaluation and Program Planning* 2014 Nov 27;49C:41-49.
- 44) Glasgow RE, Kessler RS, **Ory MG**, Roby D, Gorin SS, Krist A. Conducting rapid, relevant research: Lessons learned from the My Own Health Report project. *American Journal of Preventive Medicine* 2014 Aug;47(2):212-219.
- 45) **Gorman DM**. Is Project Towards No Drug Abuse (Project TND) an evidence-based drug and violence prevention program? A review and reappraisal of the evaluation studies. *The Journal of Primary Prevention* 2014 Aug;35(4):217-232.
- 46) **Gregory S**, Tan D*, Tilrico M, Edwardson N*, **Gamm L**. Bedside shift reports: What does the evidence say? *Journal of Nursing Administration* 2014 Oct;44(10):541-545.
- 47) **Gregory ST**, McNeal CJ, Copeland LA. Rates of cholesterol screening of youth. *Journal of the American Medical Association* 2014 Oct 1;312(13):1353-1354.
- 48) **Griffith JM**, Carpender K, Crouch JA, **Quiram BJ**. A public health hazard mitigation planning process. *Journal of Public Health Management and Practice* 2014 Sep-Oct;20 Suppl 5:S69-75.
- 49) **Han D**, **Shipp EM**, **Gorman DM**. Evaluating the effects of a large increase in off-sale alcohol outlets on motor vehicle crashes: A time-series analysis. *International Journal of Injury Control and Safety Promotion* 2014 Apr 22:1-8.
- 50) Hillemeier MM, Domino ME, **Wells R**, Goyal RK, **Kum HC**, Cilenti D, Timothy Whitmire J, Basu A. Effects of maternity care coordination on pregnancy outcomes: Propensity-weighted analyses. *Maternal and Child Health Journal* Epub 2014 Apr 26.
- 51) **Hong Y**, Chi P, Li X, Zhao G, Zhao J, Stanton B, Li L. Community-based family-style group homes for children orphaned by AIDS in rural China: an ethnographic investigation. *Health Policy and Planning* 2014 Aug 14.
- 52) **Hong Y**, Goldberg D, Dahlke VD*, Ory GM, Cargill SJ, Coughlin R, Hernandez E, Kellstedt KD*, **Peres CS**. Testing Usability and Acceptability of a Web Application to Promote Physical Activity (iCanFit) Among Older Adults. *JMIR Human Factors* 2014 10/13;1(1):e2.
- 53) **Hong Y**, Zhang C, Li X, Zhou Y, Guo W. Female sex workers and their gatekeepers in China: Implications for HIV/STI Prevention. *Qualitative Health Research* 2014 October 01;24(10):1431-1439.
- 54) **Horney JA**, Davis MK, Ricchetti-Masterson KL, MacDonald PD. Fueling the public health workforce pipeline through student surge capacity response teams. *Journal of Community Health* 2014 Feb;39(1):35-39.
- 55) **Horney JA**, Wilfert RA. Accelerating preparedness: Leveraging the UNC PERLC to improve other projects related to public health surveillance, assessment, and regionalization. *Journal of Public Health Management and Practice* 2014 Sep-Oct;20 Suppl 5:S76-8.
- 56) **Horney J**, Simon M, Grabich S, Berke P. Measuring participation by socially vulnerable groups in hazard mitigation planning, Bertie County, North Carolina. *Journal of Environmental Planning and Management* Epub 2014 Apr 7.
- 57) Jankowski CM, **Ory MG**, Friedman DB, Dwyer A, Birken SA, Risendal B. Searching for maintenance in exercise interventions for cancer survivors. *Journal of Cancer Survivorship* 2014 Dec;8(4):697-706.
- 58) Jiang W, Chen L, Batchu SR, Gardinali PR, Jasa L, Marsalek B, Zboril R, Dionysiou DD, O'Shea KE, **Sharma VK**. Oxidation of microcystin-LR by ferrate(VI): Kinetics, degradation pathways, and toxicity assessments. *Environmental Science & Technology* 2014 Oct 21;48(20):12164-12172.
- 59) Johnson DB, Quinn E, Sitaker M, Ammerman A, Byker C, Dean W, Fleischhacker S, Kolodinsky J, Pinard C, Pitts SB, **Sharkey J**. Developing an agenda for research about policies to improve access to healthy foods in rural communities: A concept mapping study. *BMC Public Health* 2014 Jun 12;14:592-2458-14-592.
- 60) **Johnson NM**, Egner PA, Baxter VK, Sporn MB, Wible RS, Sutter TR, Groopman JD, Kensler TW, Roebuck BD. Complete protection against aflatoxin B(1)-induced liver cancer with a triterpenoid: DNA adduct dosimetry, molecular signature, and genotoxicity threshold. *Cancer Prevention Research* 2014 Jul;7(7):658-665.
- 61) Kahvecioglu D, Ramiah K, **McMaughan D**, Garfinkel S, McSorley VE, Nguyen QN, Yang M, Pugliese C, Mehr D, **Phillips CD**. Multidrug-resistant organism infections in US nursing homes: A national study of prevalence, onset, and transmission across care settings, October 1, 2010-December 31, 2011. *Infection Control and Hospital Epidemiology* 2014 Oct;35 Suppl 3: S48-55.
- 62) **Kash B**, Spaulding A, **Gamm LD**, Johnson CE. Healthcare strategic management and the resource based view. *Journal of Strategy and Management* 2014 08/12.
- 63) **Kash BA**, Spaulding A*, Johnson CE, **Gamm L**. Success factors for strategic change initiatives: A qualitative study of healthcare administrators' perspectives. *Journal of Healthcare Management* 2014 Jan-Feb;59(1): 65-81.
- 64) **Kash BA**, Zhang Y*, Cline KM*, Menser T*, Miller TR. The perioperative surgical home (PSH): a comprehensive review of us and non-us studies shows predominantly positive quality and cost outcomes. *Milbank Quarterly* 2014 Dec;92(4): 796-821.
- 65) Kensler KH, Slocum SL, Chartoumpekis DV, Dolan PM, **Johnson NM**, Ilic Z, Crawford DR, Sell S, Groopman JD, Kensler TW, Egner PA. Genetic or pharmacologic activation of Nrf2 signaling fails to protect against aflatoxin genotoxicity in hypersensitive GSTA3 knockout mice. *Toxicological Sciences* 2014 Jun;139(2):293-300.
- 66) Kim H, Hwang YS, **Sharma VK**. Adsorption of antibiotics and iopromide onto single-walled and multi-walled carbon nanotubes. *Chemical Engineering Journal* 2014 /11/1;255(0):23-27.
- 67) Kortum P, **Peres SC**. The relationship between system effectiveness and subjective usability scores using the system usability scale. *International Journal of Human-Computer Interaction* 2014 07/03.

Publications CY 2014

- 68) Krist AH, **Phillips SM**, Sabo RT, Balasubramanian BA, Heurtin-Roberts S, **Ory MG**, Johnson SB, Sheinfeld-Gorin SN, Estabrooks PA, Ritzwoller DP, Glasgow RE, MOHR Study Group. Adoption, reach, implementation, and maintenance of a behavioral and mental health assessment in primary care. *Annals of Family Medicine* 2014 Nov-Dec;12(6):525-533.
- 69) **Kum HC**, Krishnamurthy A, Machanavajjhala A, Ahalt SC. Social Genome: Putting Big Data to work for population informatics. *IEEE Computer Special Outlook Issue* 2014;47(1):56-63.
- 70) **Kum HC**, Krishnamurthy A, Machanavajjhala A, Reiter MK, Ahalt S. Privacy preserving interactive record linkage (PPIRL). *Journal of the American Medical Informatics Association* 2014 Mar-Apr;21(2):212-220.
- 71) Lavery AM, **Brender JD**, **Zhao H**, Sweeney A, Felkner M, Suarez L, Canfield MA. Dietary intake of choline and neural tube defects in Mexican Americans. *Birth Defects Research Part A: Clinical and Molecular Teratology* 2014 Jun;100(6):463-471.
- 72) Lorden AL*, **Radcliff TA**, **Jiang L**, Horel SA, Smith ML, Lorig K, Howell BL, Whitelaw N, **Ory M**. Leveraging administrative data for program evaluations: A method for linking Data sets without unique identifiers. *Evaluation & the Health Professions* 2014 Aug 19.
- 73) Lorden AL*, Zhang Y, Lin S, **Cote MJ**. Measure is of Success: The Role of Human Factors in Lean Implementation in Healthcare. *The Quality Management Journal* 2014;21(3):26-37.
- 74) Lu W, McKyer E, Lee C, Goodson P, **Ory MG**, Wang S. Perceived barriers to children inverted question marks active commuting to school: A systematic review of empirical, methodological and theoretical evidence. *International Journal of Behavioral Nutrition and Physical Activity* 2014 Nov 18;11(1):140.
- 75) Lu W, McKyer EL, Lee C, Wang S, Goodson P, **Ory MG**. Active commuting to school: A test of a modified integrative model. *American Journal of Health Behavior* 2014 Nov;38(6):900-913.
- 76) Mallilay J, Heumann M, Perrotta D, Wolkin AF, Schnall AH, Podgornik MN, Cruz MA, **Horney JA**, Zane D, Roisman R, Greenspan JR, Thoroughman D, Anderson HA, Wells EV, Simms EF. The role of applied epidemiology methods in the disaster management cycle. *American Journal of Public Health* 2014 Nov;104(11):2092-2102.
- 77) Marroquin-Cardona AG, **Johnson NM**, Phillips TD, Hayes AW. Mycotoxins in a changing global environment—a review. *Food and Chemical Toxicology* 2014 Jul;69:220-230.
- 78) McBeath B, Collins-Camargo C, Chuang E, **Wells R**, Bunger AC, Jolles MP. New directions for research on the organizational and institutional context of child welfare agencies: Introduction to the symposium on “The Organizational and Managerial Context of Private Child Welfare Agencies”. *Children and Youth Services Review* 2014 3;38(0):83-92.
- 79) McNeal CJ, Zachariah JP, **Gregory S**, Cassidy-Bushrow AE, Wilson DP, Tom JO, VanWormer JJ, Wright EA, Copeland LA. Identifying and Reducing Barriers to Improve Lipid Screening in Youth. *Current Cardiovascular Risk Reports* 2014 06/26;8(8):1-7.
- 80) **Mehta RK**, Parasuraman R. Effects of mental fatigue on the development of physical fatigue: a neuroergonomic approach. *Human Factors* 2014 Jun;56(4):645-656.
- 81) **Mehta RK**, Shortz AE*. Obesity-related differences in neural correlates of force control. *European Journal of Applied Physiology* 2014 Jan;114(1):197-204.
- 82) Menser TL*, **Radcliff TA**, Schuller KA. Implementing a medical screening and referral program for rural emergency departments. *Journal of Rural Health* 2014 Aug 13.
- 83) Moore K, **Jiang L**, Manson SM, Beals J, Henderson W, Pratte K, Acton KJ, Roubideaux Y. Case management to reduce cardiovascular disease risk in American Indians and Alaska Natives with diabetes: Results from the Special Diabetes Program for Indians Healthy Heart Demonstration Project. *American Journal of Public Health* 2014 Nov;104(11):e158-64.
- 84) **Morrissey MA**. *State Insurance Mandates*. In: A.J. Culyer, editor. *Encyclopedia of Health Economics* San Diego: Elsevier Science; 2014. p. 348-351.
- 85) **Morrissey MA**. *Cost Shifting*. In: Culyer, A.J., editor. *Encyclopedia of Health Economics* San Diego: Elsevier Science; 2014. p. 126-129.
- 86) **Morrissey MA**. *Health insurance*. Chicago, Illinois. Health Administration Press; 2014.
- 87) Ojinnaka C*, Vuong A*, Helduser J, Nash P, **Ory MG**, McClellan DA, **Bolin JN**. Determinants of variations in self-reported barriers to colonoscopy among uninsured patients in a primary care setting. *Journal of Community Health* 2014 Aug 6.
- 88) Oluoyomi AO, Lee C, Nehme E, **Dowdy D**, **Ory MG**, Hoelscher DM. Parental safety concerns and active school commute: correlates across multiple domains in the home-to-school journey. *International Journal of Behavioral Nutrition and Physical Activity* 2014 Mar 6;11(1):32-5868-11-32.
- 89) Olvera-Vargas H, Oturan N, Aravindakumar CT, Paul MM, **Sharma VK**, Oturan MA. Electro-oxidation of the dye azure B: Kinetics, mechanism, and by-products. *Environmental Science and Pollution Research* 2014 Jul;21(14):8379-8386.
- 90) Onufrak SJ, Park S, **Sharkey JR**, Merlo C, Dean WR, Sherry B. Perceptions of tap water and school water fountains and association with intake of plain water and sugar-sweetened beverages. *Journal of School Health* 2014 Mar;84(3):195-204.
- 91) Onufrak SJ, Park S, **Sharkey JR**, Sherry B. The relationship of perceptions of tap water safety with intake of sugar-sweetened beverages and plain water among US adults. *Public Health Nutrition* 2014 Jan;17(1):179-185.
- 92) **Ory M**, **Bolin J**, Lopez-Arenas A. Implementation of a diabetes education kiosk in a low-income clinical setting: a community implementation process. *Diabetes Spectrum* 2014 Nov;27(4):281-288.
- 93) **Ory MG**, Altpeter M, Belza B, Helduser J, Zhang C, Smith ML. Perceptions about community applications of RE-AIM in the promotion of evidence-based programs for older adults. *Evaluation & the Health Professions* Epub 2014 Jul 11.
- 94) **Ory MG**, Anderson LA, Friedman DB, Pulczinski JC, Eugene N, Satariano WA. Cancer prevention among adults aged 45-64 years: setting the stage. *American Journal of Preventive Medicine* 2014 Mar;46(3 Suppl 1):S1-6.
- 95) **Ory MG**, Smith ML, Ahn S, **Jiang L**, Lorig K, Whitelaw N. National study of chronic disease self-management: Age comparison of outcome findings. *Health Educ.Behav.* 2014 Oct;41(1 Suppl):34S-42S.
- 96) Osathaphan K, Kittisarn W, Chatchaitanawat P, Yngard RA, Kim H, **Sharma VK**. Oxidation of Ni(II)-cyano and Co(III)-cyano complexes by Ferrate (VI): effect of pH. *Journal of Environmental Science and Health Part A: Toxic/Hazardous Substances and Environmental Engineering* 2014;49(12):1380-1384.
- 97) Osmonbekov T, **Gregory ST**, Yordy E. Affordable Care Act: Impact on healthcare industries and marketing implications. *Journal of Law, Business and Ethics* 2014; Winter 2014.
- 98) Park ES, Hopke PK, Oh MS, Symanski E, **Han D**, Spiegelman CH. Assessment of source-specific health effects associated with an unknown number of major sources of multiple air pollutants: A unified Bayesian approach. *Biostatistics* 2014 Jul;15(3):484-497.
- 99) Park S, Navratil S, Gregory A, Bauer A, Srinath I, Szonyi B, Nightingale K, Anciso J, Jun M, **Han D**, Lawhon S, Ivanek R. Farm management, environment, and weather factors jointly affect the probability of spinach contamination by generic *Escherichia coli* at the preharvest stage. *Applied and Environmental Microbiology* 2014 Apr;80(8):2504-2515.
- 100) Paterson C, Miller K, **Benden M**, **Shipp E**, **Pickens A**, **Wendel M**, Pronovost P. The safe day call: Reducing silos in health care through frontline risk assessment. *Joint Commission Journal on Quality and Patient Safety* 2014-10-01T00:00:00;40(10):476.

Publications CY 2014

- 101) Perri MG, Limacher MC, von Castel-Roberts K, Daniels MJ, Durning PE, Janicke DM, Bobroff LB, **Radcliff TA**, Milsom VA, Kim C, Martin AD. Comparative effectiveness of three doses of weight-loss counseling: Two-year findings from the rural LITE trial. *Obesity* 2014 Nov;22(11):2293-2300.
- 102) Phillips SM, Glasgow RE, Bello G, **Ory MG**, Glenn BA, Sheinfeld-Gorin SN, Sabo RT, Heurtin-Roberts S, Johnson SB, Krist AH, MOHR Study Group. Frequency and prioritization of patient health risks from a structured health risk assessment. *Annals of Family Medicine* 2014 Nov-Dec;12(6):505-513.
- 103) Phillips TD, Richardson M, Cheng YS, He L, **McDonald TJ**, **Cizmas LH**, Safe SH, Donnelly KC, Wang F, Moorthy B, Zhou GD. Mechanistic relationships between hepatic genotoxicity and carcinogenicity in male B6C3F1 mice treated with polycyclic aromatic hydrocarbon mixtures. *Archives of Toxicology* 2014 Jun 3.
- 104) Qin J, **Garcia TP**, Ma Y, Tang MX, Marder K, Wang Y. Combining isotonic regression and Em Algorithm to predict genetic risk under monotonicity constraint. *Annals of Applied Statistics* 2014;8(2):1182-1208.
- 105) Risendal B, Dwyer A, Seidel R, Lorig K, Katzenmeyer C, Coombs L, Kellar-Guenther Y, Warren L, Franco A, **Ory M**. Adaptation of the chronic disease self-management program for cancer survivors: Feasibility, acceptability, and lessons for implementation. *Journal of Cancer Education*. 2014 Dec;29(4):762-771.
- 106) Ritter PL, **Ory MG**, Laurent DD, Lorig K. Effects of chronic disease self-management programs for participants with higher depression scores: Secondary analyses of an on-line and a small-group program. *Translational Behavioral Medicine* 2014 Dec;4(4):398-406.
- 107) Rydahl NA, McCreless T, **Cote MJ**. Transforming the Healthcare C-Suite: The Emergence of the chief transformation officer. *Journal of Healthcare Information Management* 2014;28(4):34-39.
- 108) Schneider JE, Scheibling CM, Segall D, Sambursky R, **Ohsfeldt RL**, Lovejoy L. Epidemiology and economic burden of conjunctivitis: A managed care perspective. *Journal Of Managed Care Medicine* 2014 03;17(1):78-83.
- 109) Sen B, Blackburn J, **Morrissey M**, Becker D, Kilgore M, Caldwell C, Menachemi N. Can increases in CHIP copayments reduce program expenditures on prescription drugs? *Medicare Medicaid Research Review* 2014 May 20;4(2):10.5600/mmrr2014-004-02-a03. eCollection 2014.
- 110) Sepah SC, **Jiang L**, Peters AL. Translating the diabetes prevention program into an online social network: Validation against CDC Standards. *Diabetes Educator* 2014 Apr 10;40(4):435-443.
- 111) Setien MA, **Han D**, **Zuniga GC**, Mier N, Lucio RL, Trevino L. Does injury prevention education initiate household changes in a Spanish-speaking minority population? *Journal of Community Health* 2014 Feb;39(1):167-172.
- 112) **Sharma VK**, Oturan M, Kim H. Oxidation of artificial sweetener sucralose by advanced oxidation processes: A review. *Environmental Science and Pollution Research* 2014 Jul;21(14):8525-8533.
- 113) **Sharma VK**, Siskova KM, Zboril R, Gardea-Torresdey JL. Organic-coated silver nanoparticles in biological and environmental conditions: Fate, stability and toxicity. *Advances in Colloid and Interface Science* 2014 Feb; 204: 15-34.
- 114) **Sharma VK**, Zboril R, **McDonald TJ**. Formation and toxicity of brominated disinfection byproducts during chlorination and chloramination of water: A review. *Journal of Environmental Science and Health, Part B* 2014;49(3):212-228.
- 115) **Sharma VK**, Zhao J, Hidaka H. Mechanism of photocatalytic oxidation of amino acids: Hammett correlations. *Catalysis Today; Photocatalytic Processes for Environmental Remediation, in honor of Prof. Jincai Zhao of the Chinese Academy of Sciences*. 2014 /4/1/:224(0):263-268.
- 116) **Sharma V**, Homonnay Z, Siskova K, Machala L, Zboril R. Mossbauer investigation of the reaction of ferrate(VI) with sulfamethoxazole and aniline in alkaline medium. *Hyperfine Interactions* 2014 01/01;224(1-3):7-13.
- 117) **Sharma V**, Kim H, Zboril R. *Photodegradation of beta-blockers in water*. CRC Press; 2014. p. 327-336.
- 118) Shay E, Combs T, Salvesen D, DeTrizio D*, **Horney, JA**. Assessing disaster preparedness of officials and residents in tow North Carolina counties. *Journal of Geography and Natural Disasters* 4(2): doi:10.4172/2167-0587.1000125.
- 119) Shubert TE, Smith ML, **Ory MG**. Translation of The Otago Exercise Program for adoption and implementation in the United States. *Frontiers in Public Health* 2014.
- 120) Smith ML, **Jiang L**, Prizer LP, Ahn S, Chen S, Cho J, Graham K, **Ory MG**. Health indicators associated with falls among middle-aged and older women enrolled in an evidence-based program. *Womens Health Issues* 2014 Nov-Dec;24(6):613-619.
- 121) Smith ML, **Ory MG**. Measuring success: Evaluation article types for the public health education and promotion section of frontiers in public health. *Frontiers in Public Health* 2014 Aug 13;2:111.
- 122) Smith ML, **Pickens AW**, Ahn S, **Ory MG**, DeJoy DM, Young K, Bishop G, Congleton JJ. Typing performance and body discomfort among overweight and obese office workers: A pilot study of keyboard modification. *Applied Ergonomics* Epub 2014 Jul 28.
- 123) Smith ML, Smith HA, Wilson KL, Ahn S, Pulczynski JC, **Ory MG**. Obesity and perceived severity of obstructive sleep apnea-related conditions. *Family and Community Health* 2014 Oct-Dec;37(4):258-270.
- 124) Smith ML, Wilson KL, Pulczynski JC, **Ory MG**. Support for HPV vaccination mandates for both females and males. *American Journal of Health Behavior* 2014 Nov;38(6):831-838.
- 125) Smith ML, Ahn S, **Jiang L**, Kulinski K, **Ory MG**. Factors associated with Hispanic adults attending Spanish-language disease self-management program workshops and workshop completion. *Frontiers in Public Health* 2014; 2:155.
- 126) Smith ML, Belza B, Braun KL, King S, Palmer RC, Sugihara NS, Altpeter M, Snyder S, **Ory MG**. National reach and dissemination of enhance fitness. *Health Behavior and Policy Review* 2014 -03-01T00:00:00;1(2):150-160.
- 127) Smith ML, Olubajo BA, Sosa ET, Miles TP, **Ory MG**. Physicians' perceptions about race-based disparities in HIV treatment. *Health Behavior and Policy Review* 2014;1(1):28-37.
- 128) Smith ML, **Ory MG**, Ahn S, Kulinski K, **Jiang L**, Lorig K. National dissemination of chronic disease self-management education (CDSME) Programs: An incremental examination of delivery characteristics. *Frontiers in Public Health* 2014.
- 129) Spaulding A, **Gamm L**, Kim J*, Menser T*. Multiproject interdependencies in health systems management: A longitudinal qualitative study. *Health Care Management Review* 2014 Jan-Mar;39(1):31-40.
- 130) Spaulding A, **Gamm L**, Menser T*. Physician Engagement: Strategic Considerations among Leaders at a Major Health System. *Hospital Topics* 2014 Jul-Sep;92(3):66-73.
- 131) Spaulding A, **Ohsfeldt R**. Rapid response teams and team composition: A cost-effectiveness analysis. *Nursing Economics* 2014 2014;32(4):194-203.
- 132) Stewart CJ, **Kum H**, Barth RP, Duncan DF. Former foster youth: Employment outcomes up to age 30. *Children and Youth Services Review* 2014 1;36(0):220-229.
- 133) Chang Sue-min, Doong Ruey-an, Chien-Hou Wu, **Sharma VK**, editors. *Green Catalysts for Energy Transformation and Emission Control*. American Chemical Society; 2014.
- 134) Tajeu GS, Delzell E, Smith W, Arora T, Curtis JR, Saag KG, **Morrissey MA**, Yun H, Kilgore ML. Death, debility, and destitution following hip fracture. *Journals of Gerontology: Series A Biological Sciences and Medical Sciences* 2014 Mar;69(3):346-353.
- 135) **Taylor BD**, Darville T, Ferrell RE, Ness RB, Kelsey SF, Haggerty CL. Cross-sectional analysis of Toll-like receptor variants and bacterial vaginosis in African-American women with pelvic inflammatory disease. *Sexually Transmitted Infections* 2014 Nov;90(7):563-566.

Publications CY 2014

- 136) **Taylor BD**, Ness RB, Olsen J, Hougaard DM, Skogstrand K, Roberts JM, Haggerty CL. Serum leptin measured in early pregnancy is higher in women with preeclampsia compared with normotensive pregnant women. *Hypertension* 2014 Dec 15.
- 137) **Tekwe CD**, Carter RL, Cullings HM, Carroll RJ. Multiple indicators, multiple causes measurement error models. *Statistics in Medicine* 2014 Nov 10;33(25):4469-4481.
- 138) Teufel-Shone NI, **Jiang L**, Beals J, Henderson WG, Zhang L, Acton KJ, Roubideaux Y, Manson SM. Demographic characteristics and food choices of participants in the Special Diabetes Program for American Indians Diabetes Prevention Demonstration Project. *Ethnicity & Health* 2014 Jun 23:1-14.
- 139) Tisone CA, Guerra SA, Lu W, McKyer EL, **Ory M**, **Dowdy D**, Wang S, Miao J, Evans A, Hoelscher DM. Food-shopping environment disparities in Texas WIC vendors: A pilot study. *American Journal of Health Behavior* 2014 Sep;38(5):726-736.
- 140) Tolgyesi Á, Fekete J, **Sharma VK**, Pálfői Á, Bekesi K, Lukonics D, Pleva G. A LC-MS/MS confirmatory method for determination of chloramphenicol in real samples screened by competitive immunoassay. *Acta Alimentaria*. 2014 06/01;43(2):306-314.
- 141) Tolgyesi A, **Sharma VK**, Fekete J. Confirmatory analysis of stanzolol metabolites in bovine, pig and sheep urines using an optimized clean-up and liquid chromatography-tandem mass spectrometry. *Journal of Pharmaceutical and Biomedical Analysis* 2014 Jan;88:45-52.
- 142) Tolgyesi A, Tolgyesi L, Bekesi K, **Sharma VK**, Fekete J. Determination of tetracyclines in pig and other meat samples using liquid chromatography coupled with diode array and tandem mass spectrometric detectors. *Meat Science* 2014 Mar;96(3):1332-1339.
- 143) **Towne SD, Jr**, **Ory MG**, Smith ML. Cost of fall-related hospitalizations among older adults: Environmental comparisons from the 2011 Texas Hospital Inpatient Discharge Data. *Population Health Management* 2014 Dec;17(6):351-356.
- 144) **Towne SD, Jr**, Smith ML, **Ory MG**. Geographic variations in access and utilization of cancer screening services: Examining disparities among American Indian and Alaska Native Elders. *International Journal of Health Geographics* 2014 Jun 9;13:18-072X-13-18.
- 145) **Towne SD, Jr.**, Probst J, Hardin J, Bell BA, Glover S. Differences in the Effects of the Great Recession on Health Outcomes among Minority Working-Age Adults. *Journal of Racial and Ethnic Health Disparities* 2014 09/11:1-10.
- 146) Trueblood AB*, Rincon R, Perales R, Hollingsworth R*, Miller C, **McDonald TJ**, **Cizmas L**. A Pilot Study of changes in environmental knowledge and behaviors among head start employees and parents following environmental health training in Webb County, TX. *Journal of Immigrant and Minority Health* 2014 Dec 24.
- 147) Umstatt Meyer MR, Walsh SM, **Sharkey JR**, Morgan GB, Nalty CC. Physical and social environmental characteristics of physical activity for Mexican-origin children: Examining differences between school year and summer perceptions. *BMC Public Health* 2014 Sep 16;14:958-2458-14-958.
- 148) Vielot NA, **Horney JA**. Can merging the roles of public health preparedness and emergency management increase the efficiency and effectiveness of emergency planning and response? *International Journal of Environmental Research and Public Health*. 2014 Mar 10;11(3):2911-2921.
- 149) Vollmer Dahlke D*, Cho J, Gines V, St. John J, **Ory M**. Barriers to physical activity education for cancer survivors: A survey of English and Spanish speaking Promotores/Community Health Workers in Texas. *Texas Public Health Journal* 2014 Winter 2014;66(1):15-19.
- 150) Vuong AM*, Huber JC, Jr, **Bolin JN**, **Ory MG**, **Moudouni DM**, Helduser J, Begaye D, Bonner TJ, Forjuoh SN. Factors affecting acceptability and usability of technological approaches to diabetes self-management: A case study. *Diabetes Technology and Therapeutics* 2014 Dec;14(12):1178-1182.
- 151) Vuong AM*, Shinde MU*, **Brender JD**, **Shipp EM**, Huber JC, Jr, **Zheng Q**, **McDonald TJ**, **Sharkey JR**, Hoyt AT, Werler MM, Kelley KE, Langlois PH, Canfield MA. Nitrosatable drug exposure during pregnancy and preterm and small-for-gestational-age births. *Paediatric and Perinatal Epidemiology* Epub: 2014 Dec. 10.
- 152) Wallace JW, Poole C, **Horney JA**. The association between actual and perceived flood risk and evacuation from Hurricane Irene, Beaufort County, North Carolina. *Journal of Flood Risk Management* 2014.
- 153) Lee WC*, **Jiang L**, **Phillips CD**, **Ohsfeldt RL**. Rural- Urban differences in health care expenditures: Empirical data from US households. *Advances in Public Health, Vol 2014 (2014)* 2014.
- 154) **Wells R**, Jolles MP, Chuang E, McBeath B, Collins-Camargo C. Trends in local public child welfare agencies 1999–2009. *Children and Youth Services Review* 2014 3;38(0):93-100.
- 155) Weyer PJ, **Brender JD**, Romitti PA, Kantamneni JR, Crawford D, **Sharkey JR**, Shinde M*, Horel SA, Vuong AM*, Langlois PH. Assessing bottled water nitrate concentrations to evaluate total drinking water nitrate exposure and risk of birth defects. *Journal of Water and Health* 2014 Dec;12(4):755-762.
- 156) Yates BJ, Zboril R, **Sharma VK**. Engineering aspects of ferrate in water and wastewater treatment - a review. *Journal of Environmental Science and Health Part A: Toxic/Hazardous Substances and Environmental Engineering* 2014;49(14):1603-1614.
- 157) Yates B, Darlington R, Zboril R, **Sharma V**. High-valent iron-based oxidants to treat perfluorooctanesulfonate and perfluorooctanoic acid in water. *Environmental Chemistry Letters* 2014 09/01;12(3):413-417.
- 158) Yun H, Curtis JR, Guo L, Kilgore M, Muntner P, Saag K, Matthews R, **Morrissey M**, Wright NC, Becker DJ, Delzell E. Patterns and predictors of osteoporosis medication discontinuation and switching among Medicare beneficiaries. *BMC Musculoskeletal Disorders* 2014 Apr 1;15:112-2474-15-112.
- 159) Zhang C, Li X, Su S, **Hong Y**, Zhou Y, Tang Z, Shen Z. Violence against Chinese female sex workers from their stable partners: A hierarchical multiple regression analysis. *Health Care for Women International* 2014 Apr 14:1-19.
- 160) Zhang Y, Wang J, **Sharma VK**. Designed synthesis of hydroxyapatite nanostructures: Bullet-like single crystal and whiskered hollow ellipsoid. *Journal of Materials Science: Materials in Medicine* 2014 Jun;25(6):1395-1401.
- 161) Zhao C, Arroyo-Mora LE, DeCaprio AP, **Sharma VK**, Dionysiou DD, O'Shea KE. Reductive and oxidative degradation of iopamidol, iodinated X-ray contrast media, by Fe(III)-oxalate under UV and visible light treatment. *Water Research* 2014 Dec 15;67:144-153.

Publications Key:

***BOLD denotes SPH faculty or staff. An asterisk (*) indicates an SPH student/ recent graduate. A double-asterisk (**) denotes a post-doctoral fellow. Listed publications were published in final form in calendar year 2014, and do not include published meeting abstracts.**

Faculty Research Interests by Department

Health Promotion & Community Health Sciences

Burdine, James. Professor. Measurement of Factors Influencing Community Capacity for Population Health Improvement; Community Health Development Strategies; Community Health Needs Assessment

Colwell, Brian. Professor. Adolescent Smoking Cessation; School Health Education; Youth Smoking Prevention; Adolescent Mental Health and Substance Abuse

Dowdy, Diane. Assistant Professor. Childhood Obesity Aimed at Prevention or Reduction; Physical Activity Programs to Community Settings; Physical Activity and Aging.

Hong, Y. Alicia. Associate Professor. HIV/AIDS and STI Prevention Intervention; Mental Health of Women and Children Affected by AIDS; Mobile Technologies to Behavioral Interventions

McLeroy, Ken. Regents Professor and Distinguished Professor. Community Capacity; Community-based Approaches to Health Promotion/Disease Prevention; Social Ecology and History of Public Health; Program Evaluation

Millard, Ann. Associate Professor. Border Health; Maternal Child Health; International Health; Occupational Health and Farm Workers; Primary Prevention of Type 2 Diabetes; Food Safety; Community-based Participatory Intervention Research

Ory, Marcia. Regents Professor and Distinguished Professor, Associate Dean for Research. Health and Wellness, Aging and Health Promotion, Maternal and Child Health, Health Technology, Community Engagement, Translational Research

Sharkey, Joe. Professor. Food Access and Food Choice in Underserved Areas; Food Insecurity and Hunger; Childhood Obesity and Effects of Structural and Individual Characteristics on Nutrition, Physical Activity, and Health Outcomes; Promotora Empowerment; Community-engaged Approach to Population Health

Spengler, John. Department Head, Professor. Active Living Policy and Obesity Prevention; Legal and Policy Issues around Injury Prevention; Physical Activity and the Built Environment; Risk Management Policy and Implementation in Sport and Recreation

Tai-Seale, Tom. Associate Professor. Local Health Systems Development; Community Empowerment of Chronic Disease Prevention; Program Planning; Evaluation for the Prevention and Control of Chronic Disease; Health Behavior Coaching

Towne, Samuel. Assistant Professor. The Intersection of Health and Place; Health-related Disparities; Health Outcomes; Access to Health Services among Aging, Minority, and Rural Populations

Epidemiology & Biostatistics

Breder, Jean. Professor. Epidemiology of Birth Defects; Prenatal Environmental and Occupational Exposures and Adverse Reproductive Outcomes; Adverse Health Effects Associated with Residential Proximity to Industrial Emissions and Hazardous Waste Sites

Garcia, Tanya. Assistant Professor. Genetic Mixture Models; High-dimensional Inference; Measurement Error; Mixed Models; Neurodegenerative Diseases; Nonparametric Models; Semiparametric Models; Survival Analysis

Gorman, Dennis. Professor and Department Head. Alcohol and Drug Availability and Violence; Alcohol and Drug Prevention Policies; System Methodologies; Science and Pseudoscience in Public Health Research

Han, Daikwon. Associate Professor. Spatial Epidemiology, GIS & Spatial Analysis Methods, Environmental Health/Exposure Science, Environmental Justice & Health Disparities, Healthcare Access, Population Studies/Spatial Demography

Horney, Jennifer. Associate Professor. Disaster Epidemiology Methods; Public Health Preparedness; Population-based Sampling; Public Health Systems and Services Research; Public Health Surveillance; Outbreak Investigation; Disaster Recovery; Community Resilience

Jian, Luohua. Assistant Professor. Longitudinal and Multilevel Data Analysis; Latent Variable Modeling; Quality of Life Research; Bayesian Methods; Health Disparities Research

Lillibridge, Scott. Professor. Biosecurity; Public Health Preparedness

Shipp, Eva. Associate Professor. Injury Prevention; Occupational and Environmental Epidemiology; Farmworkers & Other Vulnerable Populations; Motor Vehicle Safety and Record Linkage; Electronic Health Records & Other Large Data Sets

Taylor, Brandie. Assistant Professor. Reproductive and Perinatal Epidemiology Methods; Identifying Genetic Markers and Biomarkers to Predict Risk of Reproductive/Pregnancy Complications; Prevention of Sexually Transmitted Infections

Tekwe, Carmen. Assistant Professor. Cancer Research; Nutritional Epidemiology; Radiation Epidemiology; Gerontology; Health Disparities; Bioinformatics; Proteomics; Measurement Error Models; Longitudinal Data Analysis; Survival Analysis; Applications of Generalized Linear Models; Neurostatistics; Functional Data Analysis; Mixed Effects Models

Zhao, Hongwei. Professor. Survival Analysis; Longitudinal Data Analysis; Quality-adjusted Life Time Estimation; Cost-effectiveness Analysis Conducted with Censored Data; Problems Arising from Correlated Data from Longitudinal Studies; Multilevel Epidemiological Studies

Zheng, Qi. Associate Professor. Mathematical Modeling of Biological Processes; Applied Stochastic Processes; Application of Computer Algebra

Health Policy & Management

Alexander, James. Associate Professor. Development of Community & Health Networks; Small Rural Hospital Leadership; Effectiveness of Critical Access Hospitals; Nursing Shortages

Bolin, Jane. Professor. Health Law and Ethics; Regulatory Compliance; Cancer Screening & Prevention; Diabetes Self-Management; Chronic Disease Management; Interdisciplinary & Translational Research; Rural Health Research; Rural Healthy People 2020

Cote, Murray. Associate Professor. Health Care Operations; Patient Flow, Capacity Planning and Management; Demand Forecasting; Nurse Staffing and Scheduling

Research Interests

Ferdinand, Alva. *Assistant Professor.* Impact of Laws and Other Policies Relative to Public Health Outcomes: Roadway Safety, Obesity, and Access to Care; State and Federal Regulation of Health Care and Community Health Development

Gamm, Larry. *Regents Professor.* Organizational Change; Organizational Theory; Information Systems; Evaluation of Technology Adoption; Disease Management; Management of Healthcare Innovations

Gregory, Sean. *Assistant Professor.* Integrated Health Care Delivery System Performance; Impacts of Physician Integration; Decision Science Applications in Healthcare; Cost-effectiveness Research

Griffith, Jennifer. *Assistant Professor.* Program Evaluation; Public Health Emergency Preparedness; Public Health Education Practices

Hawes, Catherine. *Regents Professor and Professor Emeritus.* Defining, Measuring, and Assuring Quality in Long-term Care

Kash, Bitu. *Associate Professor.* Organizational Capacity for Change and Transformation; Success Factors for Change Implementation in Healthcare; Sources of Competitive Advantage in Healthcare Using Resource-based View; Evaluation of Integrated Primary Care; Physician Networks; Health Care Staffing; Quality and Cost; Staff Mix, Turnover and Staff Qualification; Relationship between Cost of Care, Profitability and Outcomes; Strategic Management and Decision-making in Nursing Homes

Kum, Hye-Chung. *Associate Professor.* Data Science for Health Care; Population Informatics; Health Informatics; Health Policy Research; Program Evaluation Using Big Data; Decision Support Systems for Health Policy and Management

McMaughan, Darcy. *Assistant Professor.* Elder Abuse in Long-term Care in the United States; Pain Management among Texas Medicaid Recipients; Quality of Nursing Home Care in Texas; Fall Deaths among Older Adults; Relationship between Formal and Informal Care among Medicaid Home Health Care Recipients in Texas; Aging and Health Policy

Morrisey, Michael. *Professor and Department Head.* Employer-sponsored Health Insurance; Affordable Care Act; Medicare & Medicaid; Effects of Legislation on Health and Health Care; Hospital Economics; Price Transparency in Health Care

Ohnsfeldt, Robert. *Professor.* Cost-Effectiveness and Cost Models; Economics of Health Behavior; Impact of Health Sector Regulation

Phillips, Charles. *Regents Professor and Professor Emeritus.* Long-term Care and Aging; Quality of Life and Quality of Care for Frail Elderly

Quiram, Barbara. *Professor and Director.* Public Health Infrastructure; Health System Service Quality; Public Health Workforce Development; Rural Community Health System Planning and Development; Rural Community Disaster Planning

Radcliff, Tiffany. *Professor.* Health Economics; Health Policy; Health Services Research; Improving Quality of Care in Long-term Care; Access to Care for Rural and Other Underserved Populations; Improving Care Processes and Outcomes; Economic Evaluation

Sumaya, Ciro. *Professor.* Infectious diseases; Tropical Medicine; Public Health Workforce

Cizmas, Leslie. *Assistant Professor.* Environmental Health and Xenobiotic Exposures; Assessment of Pesticide Exposure in Children; Development of Effective Methods for Exposure Reduction; Community Health Education; Environmental Justice and Health Disparities; Global Health

Johnson, Natalie. *Assistant Professor.* Environmental Carcinogens; Environmental Health Disparities; Exposure to Foodborne (aflatoxins) and Environmental Carcinogens (polycyclic aromatic hydrocarbons); Chemoprevention; Development of Biomarkers of Exposure to Traffic-related Air Pollution; Prenatal Exposure to Air Pollution and Associated Epigenetic Changes; Dietary Interventions to Prevent Environmentally-induced Asthma; Population-based Animal Models of Allergic airway Disease; K-12 Environmental Education; Undergraduate Research Mentoring; Environmental Sustainability; Healthy Gardens

Maddock, Jay. *Dean and Professor.* Social Ecological Approaches to Increasing Physical Activity; Nutrition, Tobacco Use, and Global Health

McDonald, Thomas. *Professor.* Environmental Chemistry; Petroleum Geochemistry; General Organic Chemistry

Mehta, Ranjana. *Assistant Professor.* Neuroergonomics; Operator Stress and Fatigue; Obesity and the Aging Brain; Falls Prevention

Peres, S. Camille. *Assistant Professor.* Biomechanics of Human Computer Interactions; Design Guidelines for Auditory Displays; Usability of Home Health Care Technology

Pickens, Adam. *Assistant Professor.* Ergonomic Tool Development; Occupational Safety Screening/Tool Development; Upper Extremity Modeling; Manual Materials Handling; Occupational Biomechanics

Rene, Antonio. *Professor and Associate Dean for Academic Affairs.* Occupational/Environmental; Chronic Disease Epidemiology

Sharma, Virender. *Professor and Department Head.* Iron-Based Oxidants (Ferrates and Ferrites); Kinetics and Mechanism of High-Valent Transition Metals; Advanced Oxidation Methods; Solar-Based Photoactive Materials in Water Treatments; Green Synthesis of Nanoparticles; Formation, Fate and Toxicity of Nanoparticles in Aquatic Environment

Environmental & Occupational Health

Benden, Mark. *Associate Professor.* Office Worker Obesity, Classroom Ergonomics and Childhood Obesity; Medical Device Development and Testing; Rehabilitation Engineering


Bokelmann, AnnaMaria. *Assistant Professor.* Environmental Health; Site Assessment; Regulatory Compliance, Health and Safety

Carillo, Genny. *Associate Professor.* Public Health and US-Mexico Border Health Issues; Interactions of Human Health and the Environment; Asthma in School Children; Home Safety and Healthy Homes



This report is dedicated to Jean Brender, PhD, RN, Professor and Associate Dean for Research 2009-2014 for her selfless and tireless service. Dr. Jean Brender retired from The School of Public Health in 2015.

“It is amazing what you can accomplish if you do not care who gets the credit.” -Harry S. Truman



The mission of the Office of Research is to provide efficient and effective administration and support for the research activities of the faculty and staff of the School of Public Health. The Office of Research will undertake this mission through relationships internal to the school and other entities within the Texas A&M University System as well as those external to the System.